


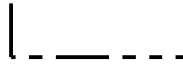

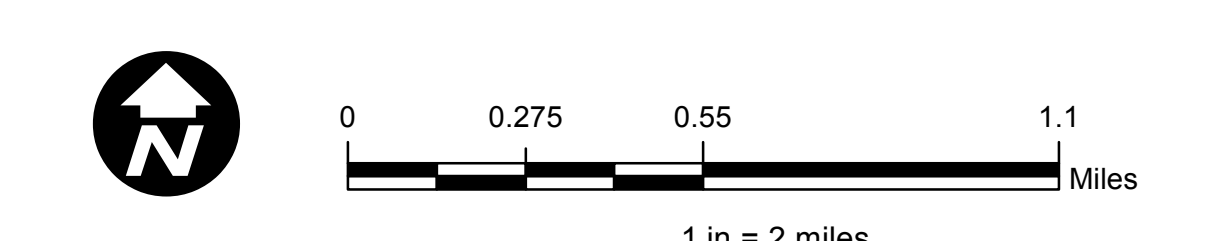
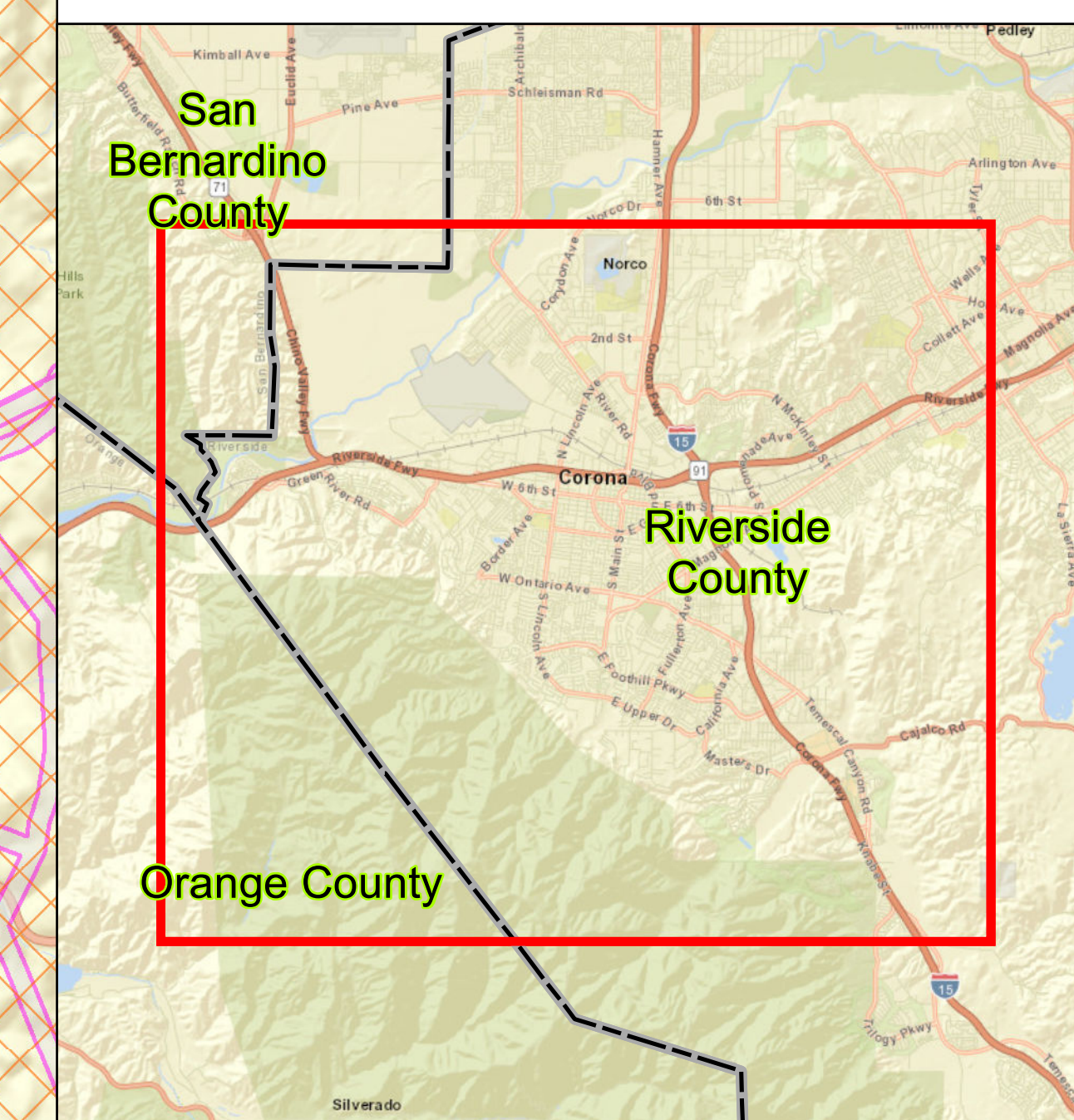
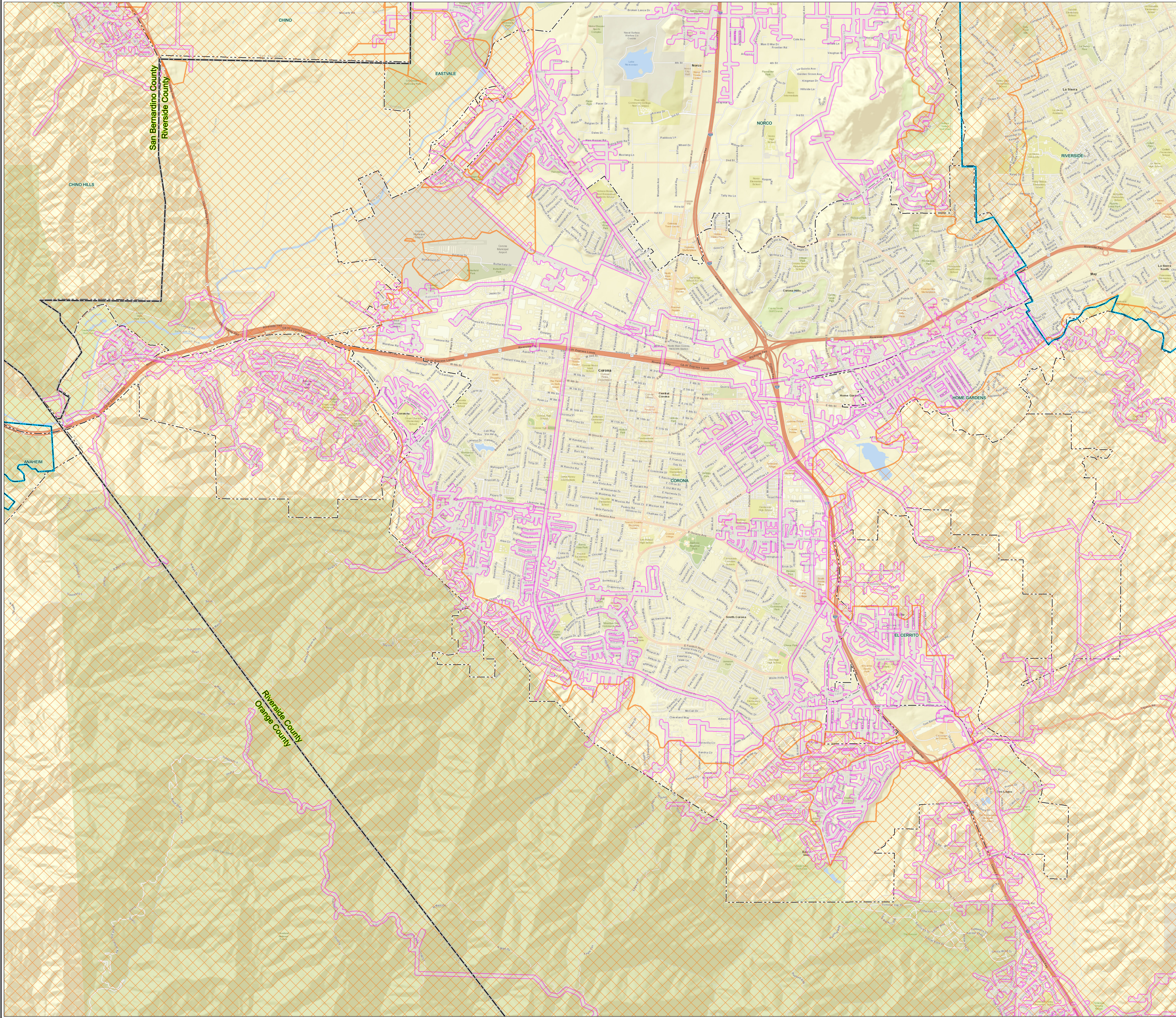


High Fire Risk Area

Corona Area

Legend

-  High Fire Risk Area
-  High Fire Risk Area Circuit subject to Public Safety Power Shutoff Protocol
-  City Boundary (MB)
-  California Counties (BLM)
-  SCE Territory



Date: 12/6/2018
File Name: PSPS_Corona_20181206.mxd
Version #:
Created By: Guy Shih@
Real Properties Geospatial Analysis

SCE has identified this area as containing distribution circuit(s) that provide electrical service to customers located in High Fire Risk Areas and may be subject to Public Safety Power Shutoffs (PSPS). Some circuits, as indicated on the map, may originate from, terminate in, or otherwise traverse High Fire Risk Areas, and the entire circuit may be subject to a PSPS event outage. While SCE's goal is to minimize the outage to affected areas during a PSPS event, various system design, operational, and environmental factors will affect how and when power is restored to these circuits or portions thereof.

The map was prepared on 12/6/2018 is subject to change at any time. All boundaries are approximate.

Features depicted herein are planning level accuracy, and intended for informational purposes only. Distances and locations may be distorted at this scale. Always consult with the proper legal documents or agencies regarding such features. Real Properties Department
Service Layer Credits: Sources: Esri, HERE, Garmin, USGS, Intermap, INCREMENT P, NRCan, Esri Japan, METI, Esri China (Hong Kong), Esri Korea, Esri (Thailand), NGCC, © OpenStreetMap contributors, and the GIS User Community

