

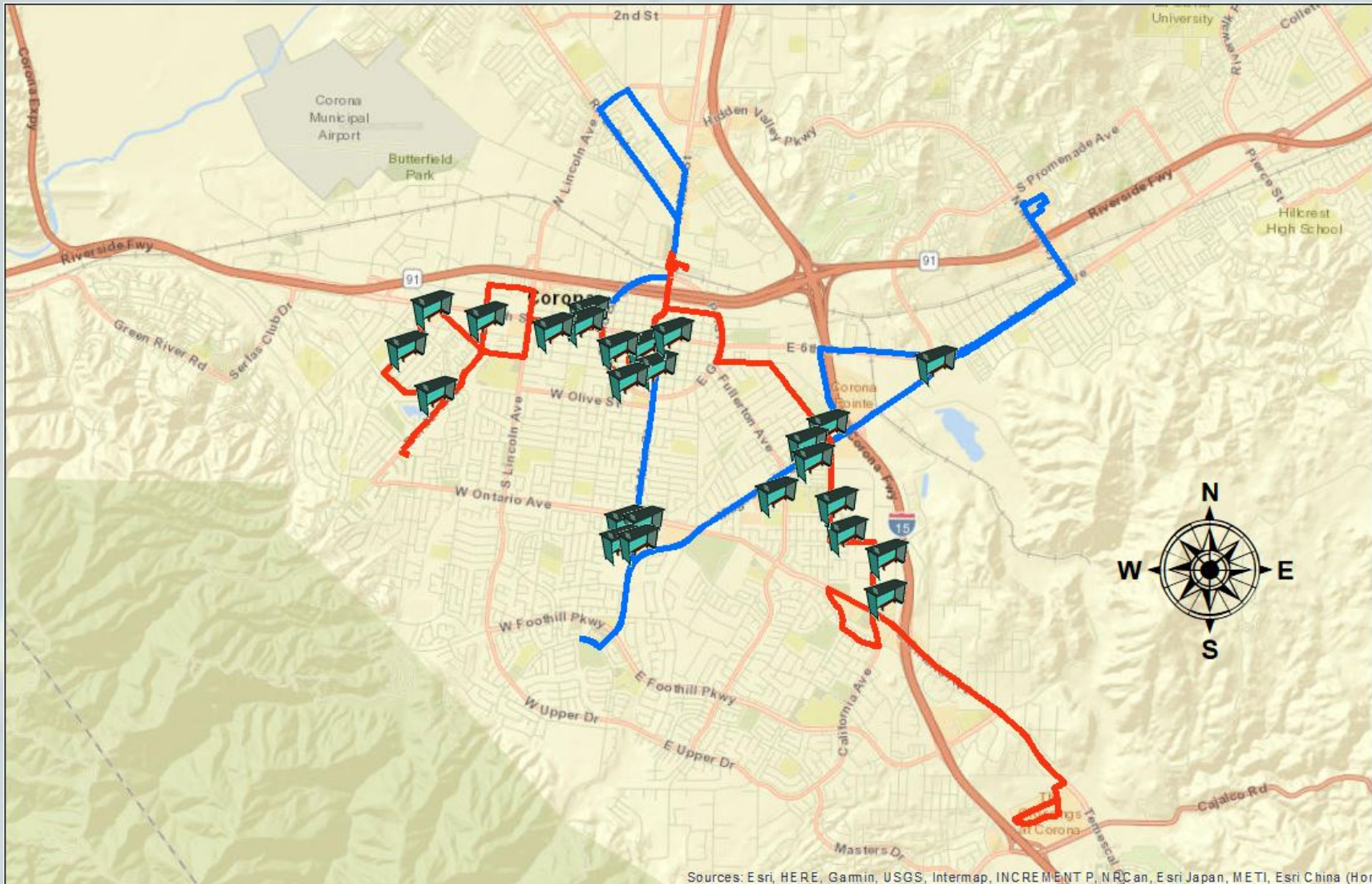


Project Completion Summary

- Project Title:** Corona Cruiser Shelter Battery and Light Improvements, Project No. 2017-30, NIB 19-008CA
- Location:** Throughout Corona Cruiser Blue and Red Line bus stops. Shelter locations and bus routes are illustrated on exhibit A.
- Description:** Project replaced deteriorating batteries of the solar lighting system of 25 passenger shelters that are located at various Corona Cruiser (CC) bus stops and relocated one passenger shelter from Fullerton Avenue (bus stop no longer being serviced) to a CC Blue Line bus stop located near the northwest corner of the Magnolia Avenue and Fullerton Avenue intersection. In addition, the project replaced some failed components of the solar lighting system that include light emitting diode (LED) light fixtures, constant current LED Drivers and Solar Lighting Controllers.
- Schedule:** Construction started January 23 and was completed January 31, 2019.
- Project Cost:** \$66,670.00
- Funding:** California Transit Security Grant (CTSG) Program Funds

Corona Cruiser Shelter Battery and Light Improvements

Project No. 2017-30, NIB 19-008CA



Sources: Esri, HERE, Garmin, USGS, Intermap, INCREMENT P, NRCan, Esri Japan, METI, Esri China (Ho

Corona Cruiser Routes

— Blue Line

— Red Line

Corona Cruiser Shelter Battery and Lighting Improvements

Project No. 2017-30, NIB 19-008CA



Corona Cruiser Passenger Shelter Location

Exhibit A

Corona Cruiser Shelter Battery and Light Improvements

MAGNOLIA AVE / FULLERTON AVE



BEFORE SHELTER PLACMENT

AFTER SHELTER PLACEMENT

Corona Cruiser Shelter Battery and Light Improvements

MAGNOLIA AVE / FULLERTON AVE



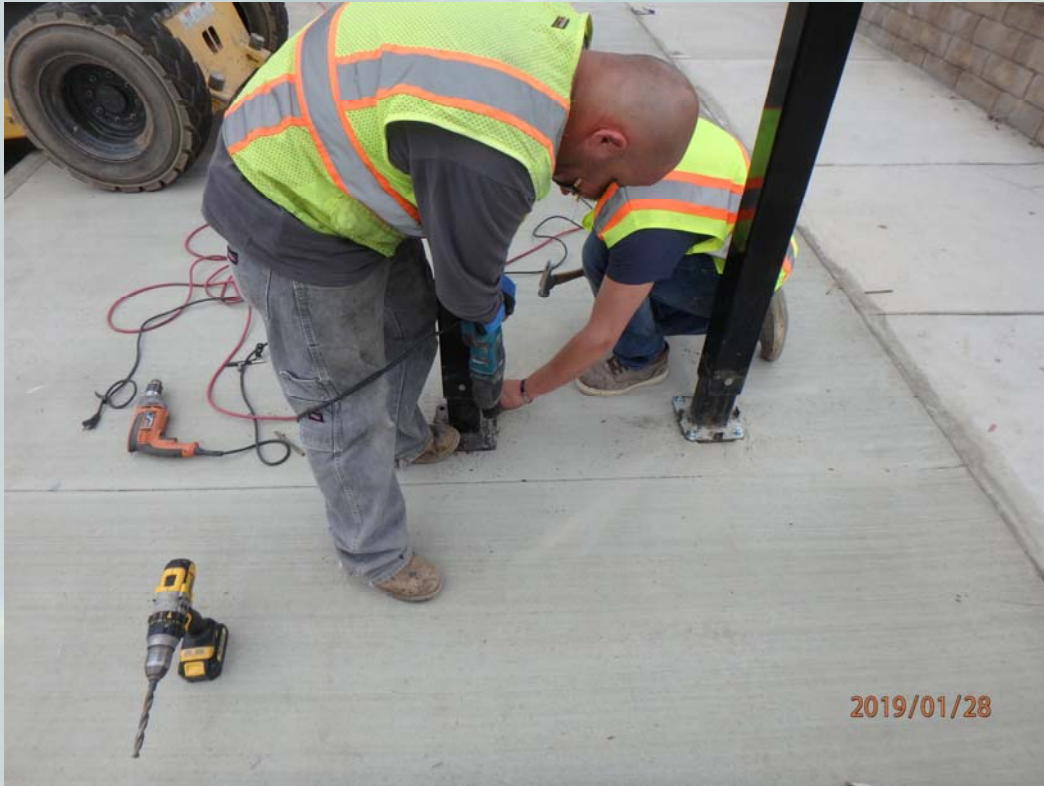
PREPARING AREA FOR CONCRETE



FINISHING CONCRETE BUS SHELTER PAD

Corona Cruiser Shelter Battery and Light Improvements

MAGNOLIA AVE / FULLERTON AVE



ANCHORING SHELTER'S LEGS



VERIFYING OPERATION OF LIGHTS

Corona Cruiser Shelter Battery and Light Improvements

Project No. 2017-30, NIB 19-008CA



**BEFORE BATTERIES REPLACED
(TYPICAL)**



**NEW BATTERIES
(TYPICAL)**

Corona Cruiser Shelter Battery and Light Improvements

6TH STREET AND VICENTIA AVENUE



LIGHT EMITTING DIODES (LED) TESTING



**CORONA CIVIC CENTER BUS STOP
ILLUMINATED AT DAWN**