



Project Completion Summary

Project Title: Arantine Hills Force Main Project, CIP No. 71580572
Bedford Canyon Road Waterline Project, CIP NO. 72390507

Location: The 12" dual sewer force main (SFM) was constructed from the Arantine Hills Lift Station north through the Arantine Hills Development, crossed Eagle Glen Parkway, continued north on Bedford Canyon Road to Foothill Parkway and connected to a sewer force main in Foothill Parkway at State Street. The project also included construction of approximately 800 feet of force main in Foothill Parkway terminating at the intersection of Foothill Parkway and California Avenue. The project included construction of a new potable waterline in Bedford Canyon Road from Foothill Parkway to Georgetown Drive. The pipe alignment is shown in exhibit A.

Description: Installation of 10,100 linear feet of dual 12-inch diameter HDPE sewer force main and 3,330 linear feet of 12-inch diameter ductile iron potable waterline.

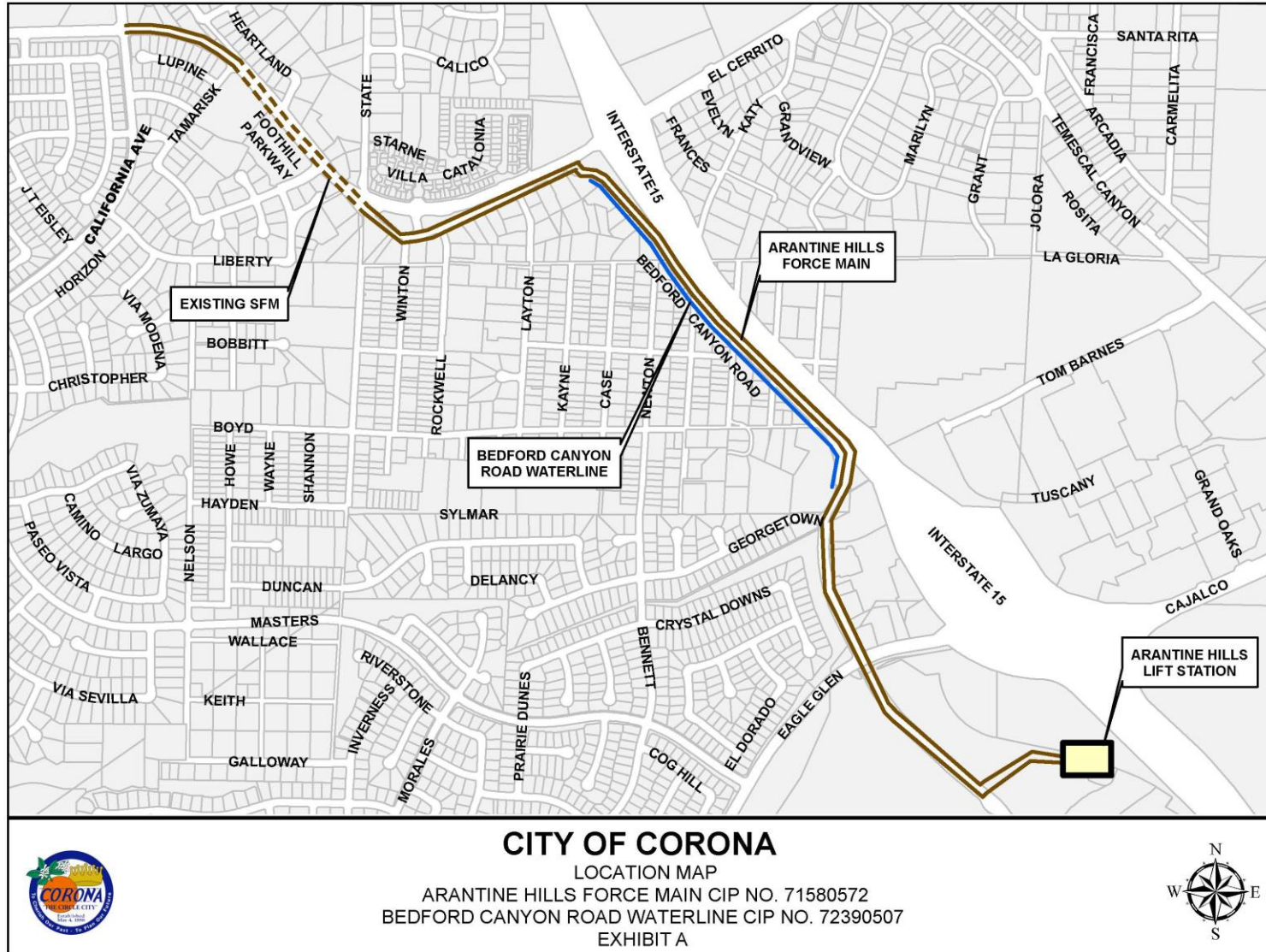
Schedule: Construction started November 2017 and was completed December 2018.

Project Cost: \$5,308,452.65

Funding: SFM funded 60% by sewer capacity fund - 40% by Arantine Hills development
Potable water funded 100% by Arantine Hills development

Arantine Hills Force Main Project, CIP 7158

Bedford Canyon Road Waterline Project, CIP 7239



Arantine Hills Force Main Project, CIP 7158 Bedford Canyon Road Waterline Project, CIP 7239



**SEWER FORCE MAIN
CONSTRUCTION IN
BEDFORD CANYON ROAD**



**SEWER FORCE MAIN CONSTRUCTION IN
BEDFORD CANYON ROAD**

**Arantine Hills Force Main Project, CIP 7158
Bedford Canyon Road Waterline Project, CIP 7239**



PIPE FUSING MACHINE



***SEWER FORCE MAIN
CONSTRUCTION IN
BEDFORD CANYON ROAD***

Arantine Hills Force Main Project, CIP 7158 Bedford Canyon Road Waterline Project, CIP 7239



**LOWERING BORING TOOL INTO
PIT IN BEDFORD CANYON ROAD**

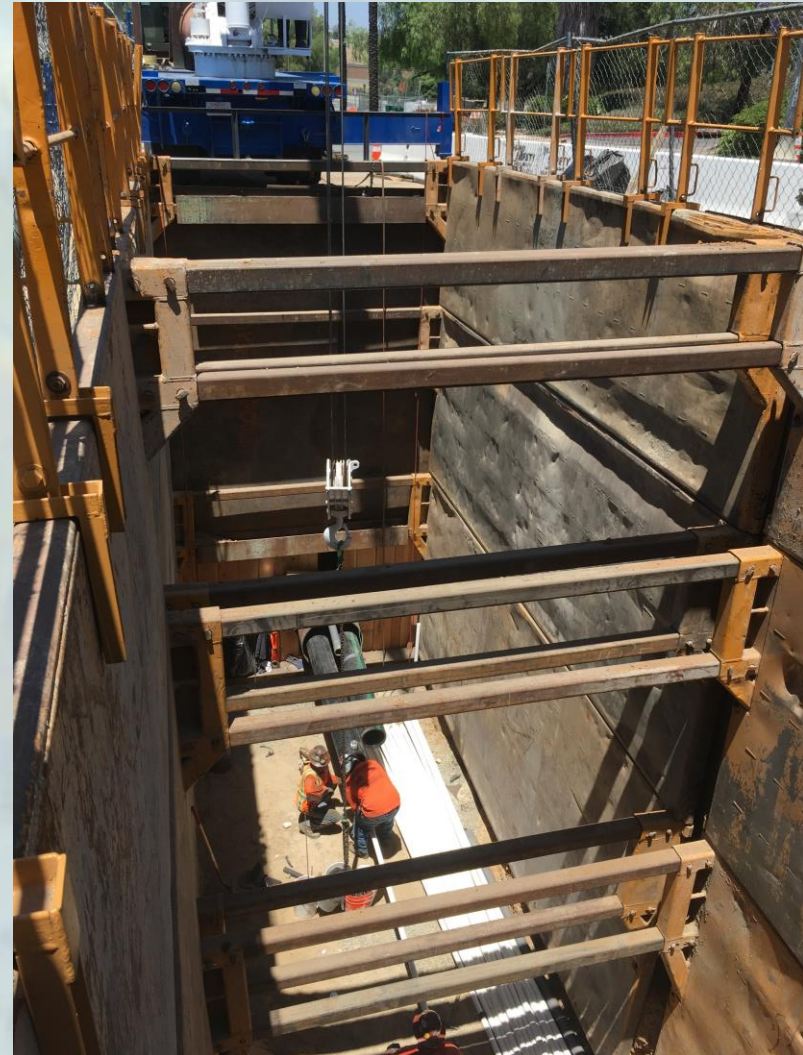


**BORE AND JACK OPERATION IN
BEDFORD CANYON ROAD**

**Arantine Hills Force Main Project, CIP 7158
Bedford Canyon Road Waterline Project, CIP 7239**



**BORING MACHINE IN
BEDFORD CANYON ROAD**



**INSERTING PIPE INTO CASING IN
BEDFORD CANYON ROAD**

**Arantine Hills Force Main Project, CIP 7158
Bedford Canyon Road Waterline Project, CIP 7239**



**WATERLINE CONSTRUCTION IN
BEDFORD CANYON ROAD**



**PAVING
BEDFORD CANYON ROAD**

Arantine Hills Force Main Project, CIP 7158
Bedford Canyon Road Waterline Project, CIP 7239



***BEDFORD CANYON ROAD
FINISH PAVEMENT
PCI = 100***



***BEDFORD CANYON ROAD
FINISH PAVEMENT
PCI = 100***