



Public Works Department

TRAFFIC UPDATE

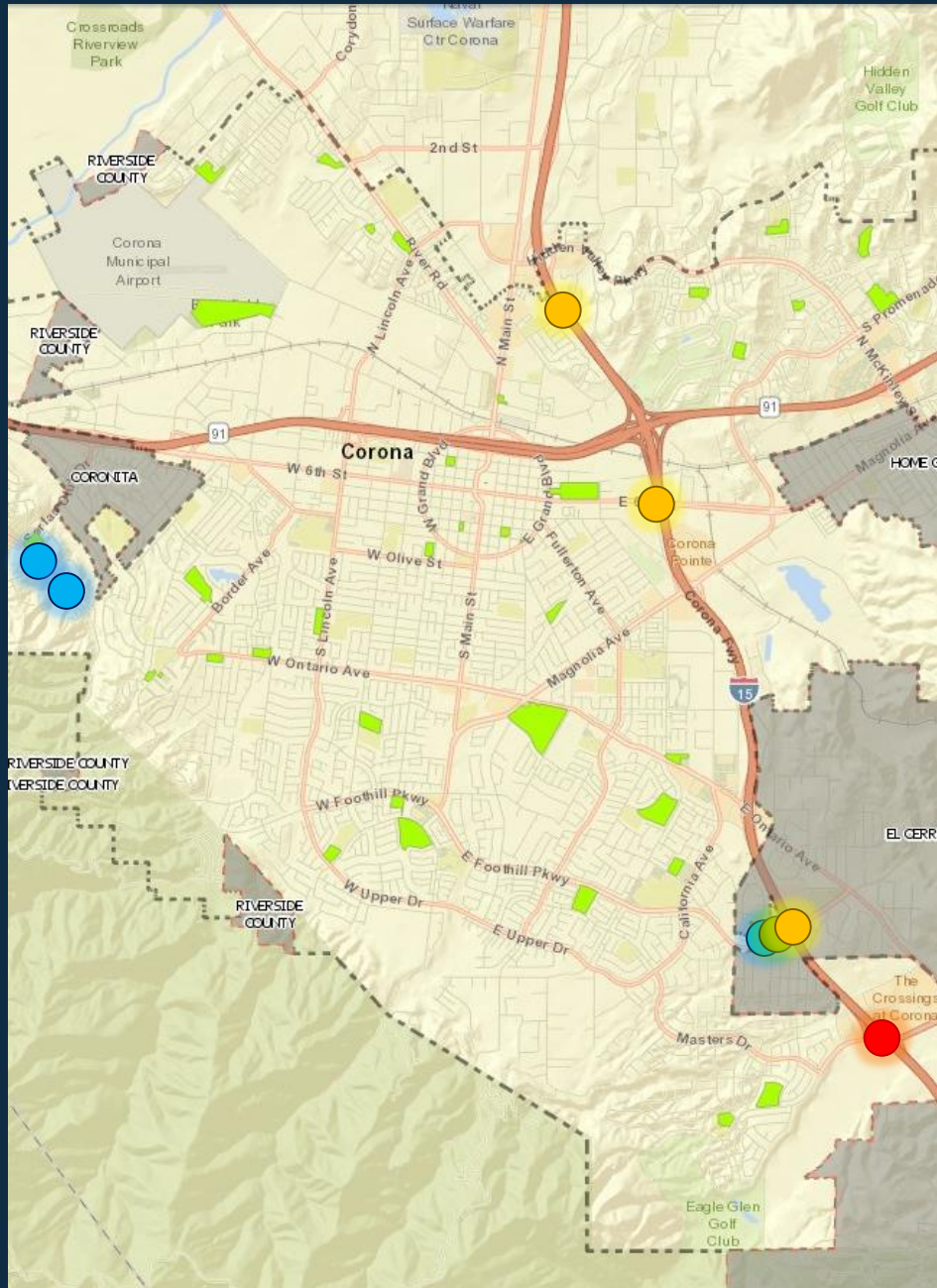
Dennis Ralls, T.E. – PW Program Manager

Corona Traffic Update Topics



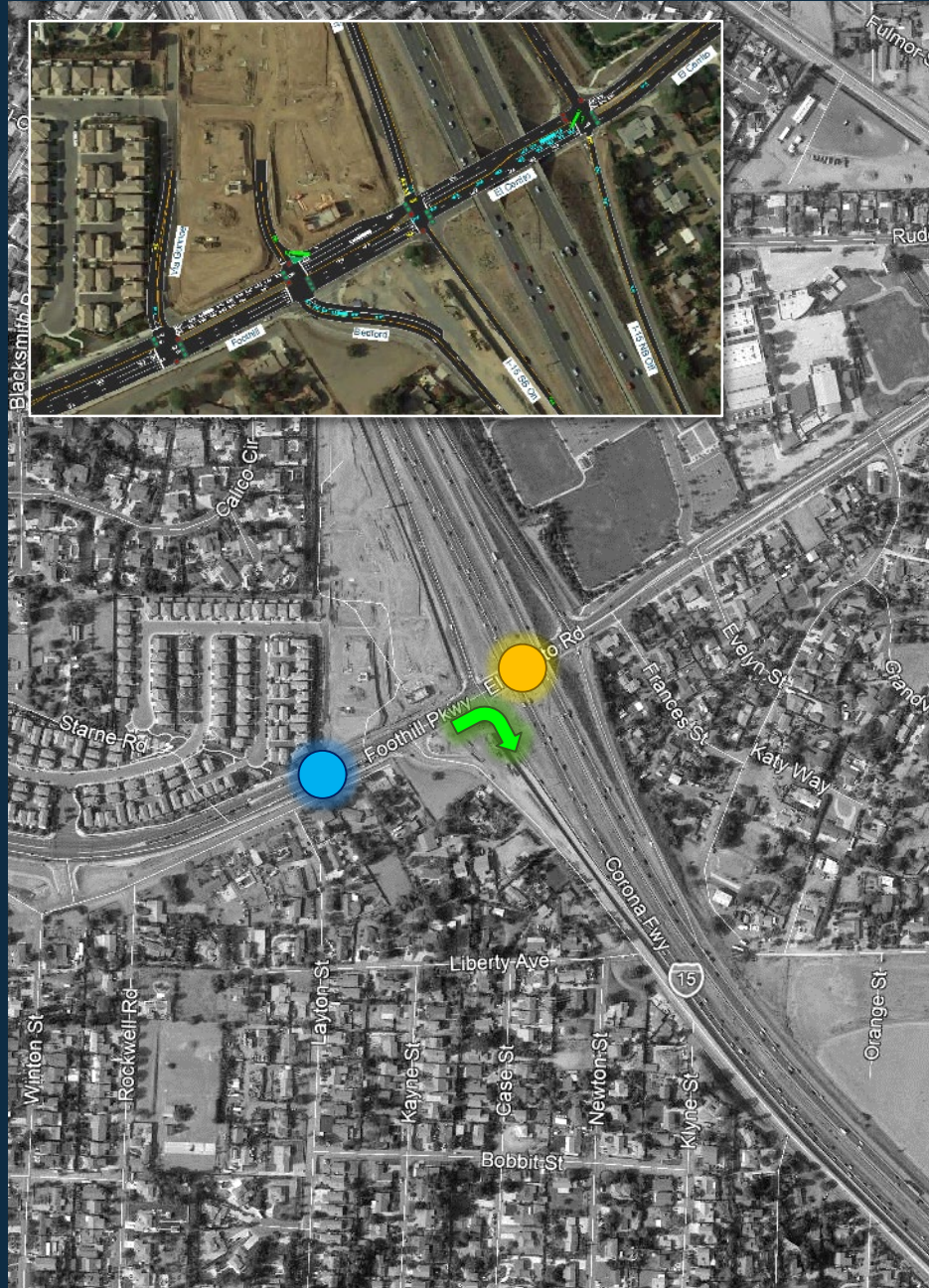
- Traffic Related Construction Projects
- Foothill / El Cerrito Traffic
- Serfas Club / Auto Center Traffic
- Green River Traffic
- Advance Traffic Management (ATMS)
- What else is going on with Traffic in Corona?

Traffic Related Construction Projects



- New Traffic Signals
 - Green River / Montana Ranch
 - Green River / Tanglewood / Sierra Bella
 - Foothill / Via Gunnoe
- El Cerrito EB Widening from Bedford to I-15 SB Ramp
- Cajalco / I-15 Bridge
- I-15 Express Lanes Project
 - Corona Avenue
 - Sixth Street
 - El Cerrito Avenue

Foothill / El Cerrito Traffic Update

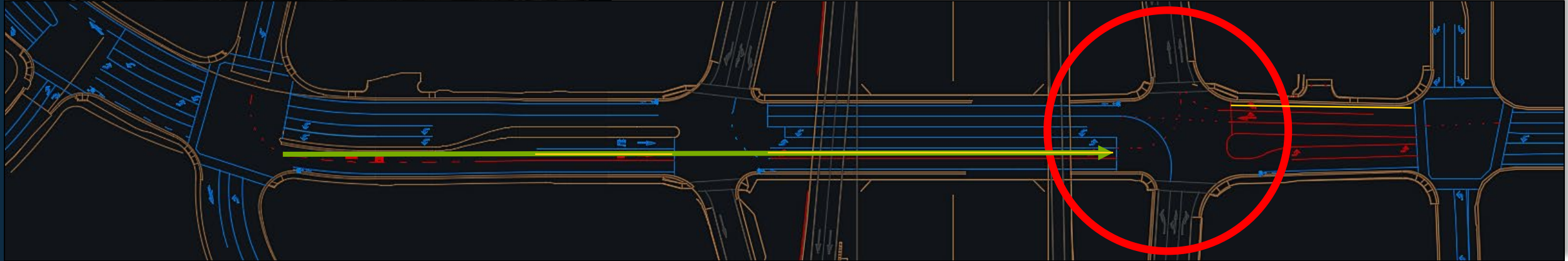


- Construction Related Congestion
- I-15 Express Lanes Project
 - Reduced WB Traffic
- New Traffic Signal
 - Foothill / Via Gunnoe
- ➡ Extend 3rd Foothill EB Lane to I-15 SB
 - Traffic Signal Coordination with Caltrans & Riverside County

Serfas Club / Auto Center Traffic Update



- Enforcement Efforts
 - Unsafe Driver Behavior
 - Police Enforcement
- Proposal to Modify Roadway Striping
 - Add Dual Turning onto SR-91 WB
 - Eliminate 1 – NB Through Lane
 - Additional 750 ft of storage





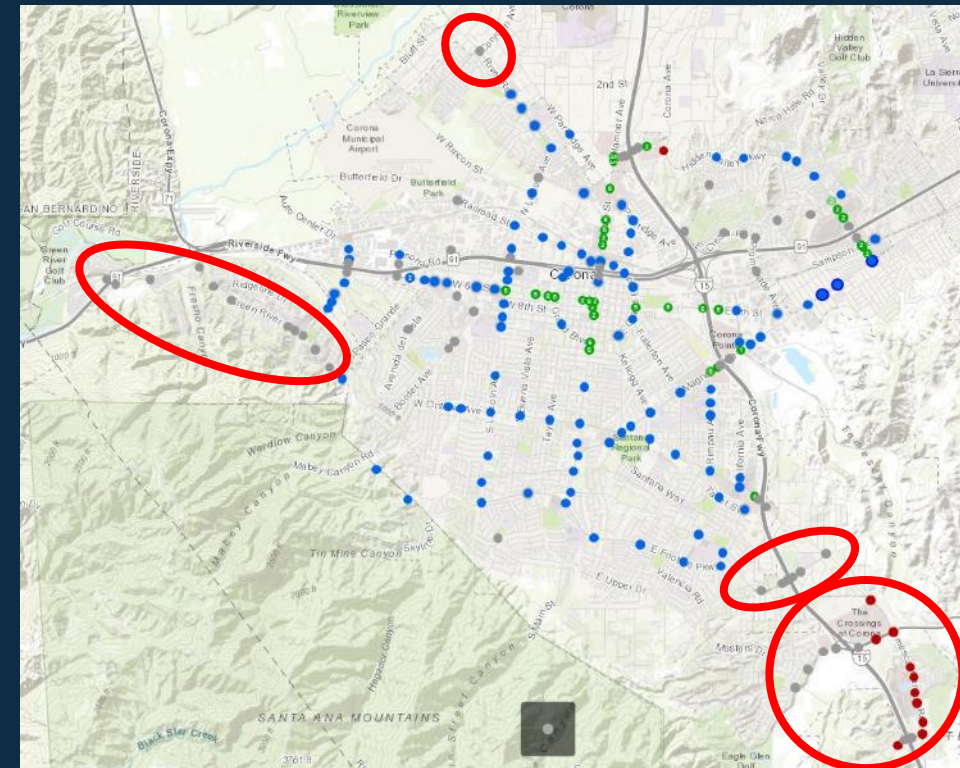
Green River Traffic Update

- Morning Congestion
- Promenade Center Cut-Through
- Enforcement Activities
- Alternate Route Enhancements
 - Main St & Lincoln Ave
- New Traffic Signals at Montana Ranch
- New Traffic Signal at Tanglewood

- Regional Improvements
 - WB SR-91 Aux Lane to SR-241
 - SR-241 / SR-91 Toll Connector
 - SR-91 / SR-71 Interchange
- Concepts & Ideas
 - Local Traffic Triggering Temporary WB On-Ramp Meter Flush

Advance Traffic Management System (ATMS)

- Traffic Management Center (TMC)
- ATMS Phase III Project
 - River Road
 - Green River
 - El Cerrito
 - Dos Lagos / Eagle Glen
 - Technology Improvements
 - Data Analytics
- Regional Cooperation
 - Cities of Norco & Riverside
 - County of Riverside & RCTC
 - Caltrans



What else is going on with Traffic in Corona?

Neighborhoods

- Speeding Concerns
- Public Parking Issues
- Collision Reduction
- Traffic Congestion

School Safety

- Pick-Up/Drop-Off Traffic Flow
- Safety Improvements
- Crossing Guards
- Outreach

Bigger Picture

- Temescal Canyon Widening
- Ontario / I-15 Widening
- McKinley Grade Separation
- Vehicle Miles Traveled (VMT)

QUESTIONS?



(951) 279-3664



Dennis.Ralls@CoronaCA.gov



www.CoronaCA.gov



www.CoronaCA.gov



Get the info you want straight to your inbox, sign up for eNotifications at www.CoronaCA.gov/Subscribe