

# CITY OF CORONA

Annual Report



COMMUNITY FACILITIES DISTRICT NO. 2001-1

FISCAL YEAR ENDING JUNE 30, 2018



SPICER CONSULTING  
GROUP

# Table of Contents

---

## **Sections**

|   |                         |   |
|---|-------------------------|---|
| 1 | District Profile        | 1 |
| 2 | Special Tax Information | 1 |
| 3 | Payment History         | 2 |

## **Tables**

|     |                           |   |
|-----|---------------------------|---|
| 2-1 | Maximum Special Tax Rates | 1 |
| 2-2 | Special Tax Breakdown     | 2 |
| 3-1 | Delinquency Summary       | 2 |

## **Appendices**

Appendix A – Boundary Map

## Community Facilities District No. 2001-1

### District Profile

#### *Project Description*

Community Facilities District No. 2001-1 (the “CFD No. 2001-1”) was created to maintain the landscape of master planned parkways, medians and greenbelt areas within the boundary of the district. Types of services provided but not limited to parkway irrigation system, slopes, trees, and ground cover. The maintenance of landscaping, planted, and installed. The landscaping includes parkways, medians, open space, and dedicated easements along the main arterial streets.

#### *Location*

CFD No. 2001-1 is generally located south of W. Ontario Ave, CFD No. 2001-1 stretch east of Border Ave. and slightly past Interstate 15. In addition, there are 181 parcels located north of W. Ontario Ave. CFD No. 2001-1 comprises over 767 acres and includes a total of 2,244 parcels.

#### *Bond Profile and Principal Amount of Bonds Outstanding*

CFD No. 2001-1 is a non-bonded district.

### Special Tax Information

#### *Special Tax*

The amount collected each year is determined by the Special Tax formula and can vary from year to year, but shall not exceed the maximum authorized (or permitted) Special Tax rates. The amount levied for the Fiscal Year 2018–19 is \$644,105.50. The Maximum Special Tax rates for Fiscal Year 2018–19 are as follows:

The Maximum Special Tax Rate(s) for Parcels assigned to each Maintenance Category for Fiscal Year 2002-03 shall be the rates set forth in table 2-1 for such Maintenance Categories. The Maximum Special Tax Rates for Parcels in all Maintenance Categories shall be increased by the percentage increase in the Consumer Price Index (All Items) for Los Angeles – Riverside – Orange County (1982-84 = 100) since the beginning of the preceding Fiscal Year, or by two percent (2.00%), whichever is greater, on July 1, 2003 for Fiscal Year 2003-04 and on each subsequent July 1 for the Fiscal Year then commencing.

*Table 2-1  
Maximum Special Tax Rates*

| Category | Taxable Unit | Maximum Special Tax |
|----------|--------------|---------------------|
| A        | Benefit Unit | \$448.84            |
| B        | Benefit Unit | \$603.64            |
| C        | Benefit Unit | \$758.39            |
| D        | Benefit Unit | \$913.16            |
| E        | Benefit Unit | \$1,067.96          |
| F        | Benefit Unit | \$1,222.71          |
| G        | Benefit Unit | \$1,377.52          |
| H        | Benefit Unit | \$1,532.27          |
| I        | Benefit Unit | \$1,687.05          |

*Table 2-2  
Special Tax Breakdown*

| Category     | Parcels      | Levied Amount       | Maximum Special Tax   | % of Maximum Special Tax |
|--------------|--------------|---------------------|-----------------------|--------------------------|
| A            | 888          | \$184,819.94        | \$539,079.22          | 34.28%                   |
| B            | 958          | \$335,337.70        | \$978,134.72          | 34.28%                   |
| C            | 58           | \$23,249.64         | \$67,814.89           | 34.28%                   |
| D            | 55           | \$17,218.30         | \$50,223.57           | 34.28%                   |
| E            | 228          | \$83,479.92         | \$243,494.28          | 34.28%                   |
| F            | 0            | \$0.00              | \$0.00                | 0.00%                    |
| G            | 0            | \$0.00              | \$0.00                | 0.00%                    |
| H            | 0            | \$0.00              | \$0.00                | 0.00%                    |
| I            | 0            | \$0.00              | \$0.00                | 0.00%                    |
| <b>Total</b> | <b>2,187</b> | <b>\$644,105.50</b> | <b>\$1,878,746.68</b> | <b>34.28%</b>            |

### Payment History

#### *Delinquency Rate for Fiscal Year 2017-18*

As of September 30, 2018, the delinquency rate for CFD No. 2001-1 for Fiscal Year 2017-18, at the rate of 1.69%.

#### *Information Concerning Delinquent Parcels*

CFD No. 2001-1 delinquency information as of September 30, 2018, is illustrated below:

*Table 3-1  
Delinquency Summary*

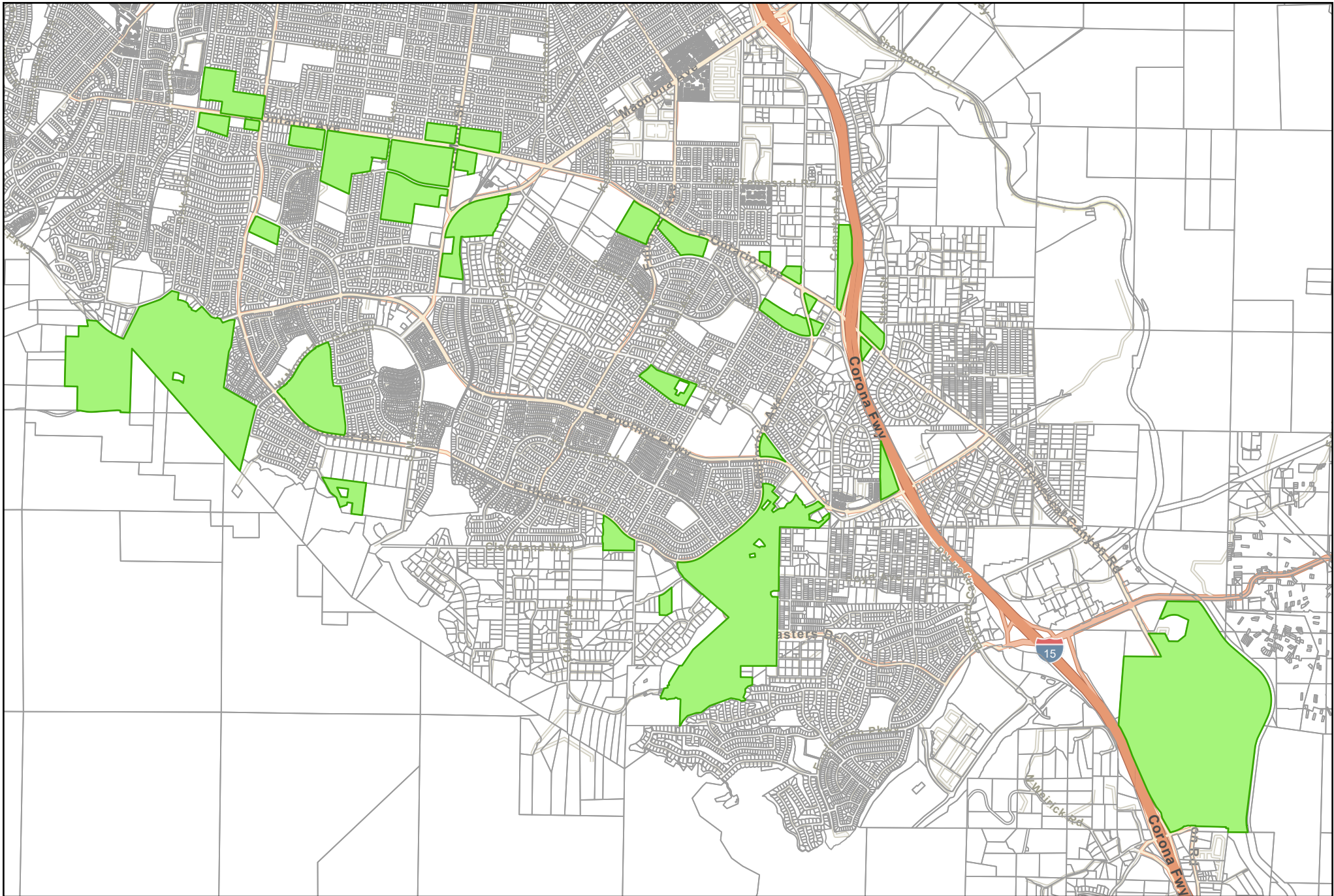
| Fiscal Year  | Levied  |                       | Delinquent |                    |              |
|--------------|---------|-----------------------|------------|--------------------|--------------|
|              | Parcels | Amount                | Parcels    | Amount             | Del. Rate    |
| 2013-14      | 2,178   | \$1,582,372.70        | 2          | \$443.41           | 0.03%        |
| 2014-15      | 2,180   | \$1,583,147.40        | 3          | \$1,141.04         | 0.07%        |
| 2015-16      | 2,193   | \$1,107,378.10        | 3          | \$843.36           | 0.08%        |
| 2016-17      | 2,193   | \$722,900.06          | 5          | \$1,190.36         | 0.60%        |
| 2017-18      | 2,184   | \$644,099.62          | 32         | \$10,906.37        | 1.69%        |
| <b>Total</b> |         | <b>\$5,639,897.88</b> | <b>36</b>  | <b>\$14,524.54</b> | <b>0.26%</b> |

# APPENDIX A

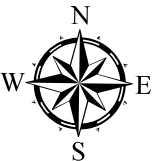
## Boundary Map



SPICER CONSULTING  
GROUP



## Community Facilities District No. 2001 - 1





SPICER CONSULTING  
GROUP