

TEMESCAL GSA

GROUNDWATER FOR PEOPLE, THE ENVIRONMENT, AND THE FUTURE

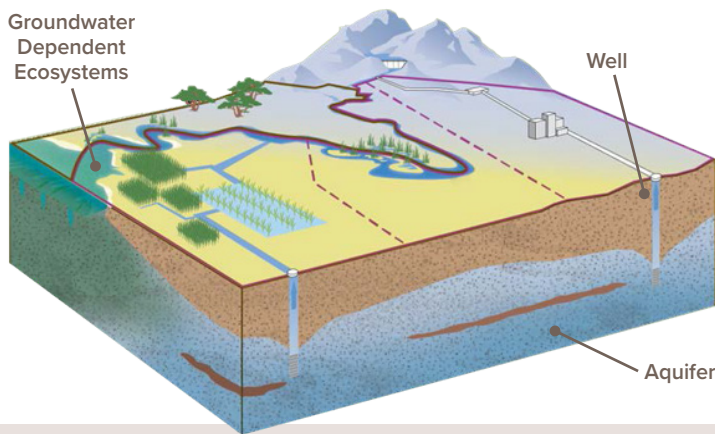
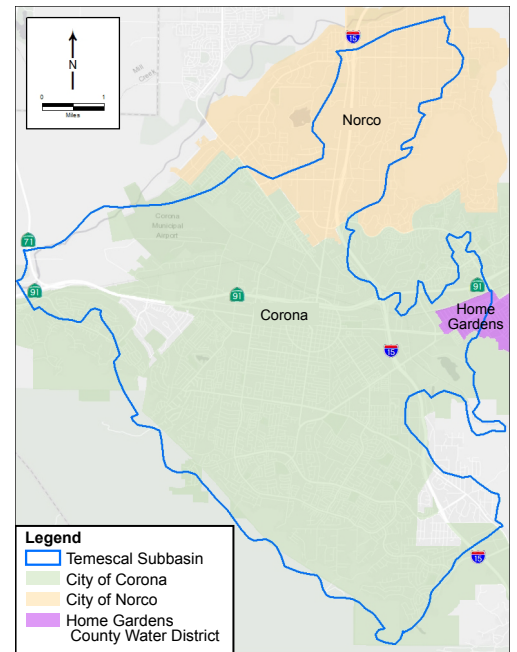
GET INVOLVED!

Community input is needed! We want your help to create an effective plan for the future of our groundwater. Visit CoronaCA.gov/Groundwater or send an email to Groundwater@CoronaCA.gov to attend a workshop or learn more!

THE WATER BENEATH YOUR FEET AND IN YOUR FAUCET

You may not know it, but if you live in Corona, Norco, or Home Gardens, you are likely using groundwater that comes from the **Temescal Basin**. Groundwater from the Temescal Basin and other local groundwater basins, along with water purchased from other areas, is treated and blended together. It then arrives as tap water at your home or business.

The groundwater beneath your feet is an important local resource that will be even more important in the future. On the other side of this factsheet, you can learn more about who manages groundwater in the Temescal Basin and how you can get involved in protecting local groundwater for your community and all who depend on it.



WHAT IS GROUNDWATER?

Groundwater is an important source of water stored in the earth beneath our feet, in spaces between sand, soils, and fractured rock known as an **aquifer**. The areas of the most productive aquifers in California have been defined as **groundwater basins**, which can extend for many miles. The Temescal Basin covers nearly 66 square miles.

WHO USES GROUNDWATER?

Groundwater from aquifers is drawn out by pumps. Cities and water districts pump groundwater from **wells** to supply to businesses and homes. People in rural areas may have their own wells for personal use and/or to water crops. Groundwater also has many uses in manufacturing and industry. It can be used to process, wash, cool, or transport a product.

Groundwater is important to the environment, it flows to and from wetlands, springs, creeks, lakes, and other bodies of water. The plants and animals that live near or in these bodies of water sometimes depend on it for their survival. These areas are called **Groundwater Dependent Ecosystems**.



Home Gardens
County Water District
3832 N. Grant St., Corona, Calif. 92879
(951) 737-4741

GROUNDWATER FOR PEOPLE, THE ENVIRONMENT, AND THE FUTURE



GROUNDWATER MANAGEMENT

For many decades, the City of Corona, City of Norco, and Home Gardens County Water District have carefully managed groundwater in the Temescal Basin. They have made sure that there is enough clean and drinkable water for the communities that need it. This has become more of a challenge due to changes in climate, the cost of importing water, and the fact that more water is needed because communities are growing. To help all stewards of groundwater plan for these changes, the state-wide **Sustainable Groundwater Management Act** was passed in 2014.

The Sustainable Groundwater Management Act or “SGMA” is a California law that gives local agencies new tools for managing groundwater and planning for the future. The City of Corona, City of Norco, and Home Gardens County Water District have formed the Temescal Subbasin Groundwater Sustainability Agency (Temescal GSA) in order to make a **Groundwater Sustainability Plan** for the Temescal Basin. Since groundwater is such an important resource for everyone, we need your help!

GROUNDWATER FOR THE FUTURE

Important factors for groundwater basin management can be seen

on the right. By creating a Groundwater Sustainability Plan, we will better manage the groundwater in the Temescal Basin and ensure we have enough for current and future generations. We will seek understanding of past groundwater use and plan for the sustainable use of future groundwater. Whether you own your own well, use water from the tap, irrigate your crops, or pump groundwater for your business, **everyone can participate in making this plan a success!** We want to hear your questions, ideas, and concerns about protecting our groundwater supply and quality in the Temescal Basin. To find out how, please visit the website at CoronaCA.gov/Groundwater.



Lowering
GW Levels



Reduction
of Storage



Seawater
Intrusion



Degraded
Quality



Land
Subsidence



Surface Water
Depletion

To learn more about the **TEMESCAL GROUNDWATER SUSTAINABILITY PLAN**, including dates of public workshops and other ways to get involved:



Please visit CoronaCA.gov/Groundwater



Send an email to Groundwater@CoronaCA.gov



Home Gardens
County Water District
3832 N. Grant St., Corona, Calif. 92879
(951) 737-4741