

TEMESCAL GSP PUBLIC WORKSHOP 1

TEMESCAL GSP TALLER COMUNITARIO 1

About the GSP

The Sustainable Groundwater Management Act or "SGMA" is a California law that gives local agencies new tools for managing groundwater and planning for the future. The City of Corona, City of Norco, and Home Gardens County Water District have formed the Temescal Groundwater Sustainability Agency (Temescal GSA) in order to make a **Groundwater Sustainability Plan** for the Temescal Basin. Since groundwater is such an important resource for everyone, we need your help!

Sobre el GSP

La Ley de Gestión Sostenible de Aguas Subterráneas o "SGMA", por sus siglas en inglés, es una ley de California que otorga a las agencias locales nuevas herramientas para gestionar las aguas subterráneas y planificar para el futuro. La Ciudad de Corona, la Ciudad de Norco y el Distrito Hídrico del Condado de Home Gardens han formado la Agencia de Sostenibilidad de Aguas Subterráneas de la Cuenca de Temescal (Temescal Groundwater Sustainability Agency) o Temescal GSA a fin de crear un **Plan de Sostenibilidad de Aguas Subterráneas** para la Cuenca de Temescal. Dado que las aguas subterráneas son un recurso muy importante para todos, ¡necesitamos su ayuda!



TEMESCAL GROUNDWATER SUSTAINABLY PLAN PUBLIC WORKSHOP 1

TEMESCAL GSP TALLER COMUNITARIO 1

SEPTEMBER 29, 2020 / 29 DE SEPTIEMBRE DE 2020



Home Gardens
County Water District
3832 N. Grant St., Corona, Calif. 92879
(951) 737-4741

WELCOME
BIENVENIDOS

TEMESCAL GSA

TEMESCAL GSP PUBLIC WORKSHOP#1

SEPTEMBER 29, 2020



Home Gardens
County Water District
3802 N. Grant St., Corona, Calif. 92678
(951) 737-4741

TEMESCAL GROUNDWATER SUSTAINABILITY PLAN



Jack Hughes

Aly Scurlock

- Off
- EN English
- ES Spanish
- Mute Original Audio



Mute Start Video

Participants 2

Chat

Share Screen

Record

ES Spanish

Leave

HOW TO USE ZOOM

CÓMO UTILIZAR ZOOM

To Select Best View
Para Seleccionar la Mejor Vista

You are viewing Jack Hughes' s screen

View Options

Speaker View

Exit Full Screen

Zoom Ratio Fit to Window

Request Remote Control

Exit Full Screen

Side-by-side mode

TEMESCAL GSA

TEMESCAL GSP PUBLIC WORKSHOP#1

SEPTEMBER 29, 2020



Home Gardens
County Water District
3052 N. Grant St., Corona, CAH. 92079
(951) 737-4741

TEMESCAL GROUNDWATER SUSTAINABILITY PLAN



Jack Hughes

Aly Scurlock



Mute



Start Video



Participants 2



Chat



Share Screen



Record



Spanish

Leave

How to Rename Yourself – Step 1
Cómo Cambiar Su Nombre – Paso 1

You are viewing Jack Hughes' screen

View Options

Speaker View

Exit Full Screen

TEMESCAL GSA

TEMESCAL GSP PUBLIC WORKSHOP#1

SEPTEMBER 29, 2020



Home Gardens
County Water District
3502 N. Great St., Corona, Calif. 92679
951 737-4741

TEMESCAL GROUNDWATER SUSTAINABILITY PLAN



Jack Hughes

Aly Scurlock

Mute Start Video Participants 2 Chat Share Screen Record Spanish

Leave

How to Rename Yourself – Step 2
Cómo Cambiar Su Nombre – Paso 2

TEMSCAL GSA

TEMSCAL GSP PUBLIC W

SEPTEMBER 29, 2020

TEMSCAL GROUNDWATER SUSTAINABILITY PLAN

Home Gardens
County Water District
3652 N. Grant St., Corona, Calif. 92709
(951) 731-4141

Participants (2)

AS Aly Scurlock (Me) **Mute** **More >** **Rename**

JH Jack Hughes (Host) + 🎤 📹

Invite Mute Me Raise Hand



Jack Hughes

Aly Scurlock

WARM UP QUESTIONS

PREGUNTAS DE CALENTAMIENTO

» Where does the water in your tap come from?

» ¿De dónde viene el agua de tu grifo/llave?

- a. Local rivers and lakes / Ríos o lagos locales
- b. Local groundwater / Aguas subterráneas locales
- c. Imported surface water / Agua superficial importada

» How much water comes from nearby sources?

» ¿Cuánta agua proviene de fuentes cercanas?

- a. 0 to 20 percent / 0 a 20 por ciento
- b. 20 to 40 percent / 20 a 40 por ciento
- c. 40 to 60 percent / 40 a 60 por ciento
- d. 60 to 100 percent / 60 a 100 por ciento



WORKSHOP PURPOSE

PROPÓSITO DEL TALLER

- » Give information about groundwater
Dar información sobre las aguas subterráneas.
- » Introduce Sustainable Groundwater Management Act, the Temescal Groundwater Sustainability Agency, the Temescal Basin, and Groundwater Sustainability Plans.
Introducir la Ley de Gestión Sostenible de las Aguas Subterráneas, la Agencia de Sostenibilidad de las Aguas Subterráneas Temescal y la Cuenca del Temescal.
- » Learn about your groundwater interests and what is important for you for the future of groundwater in the Temescal Basin.
Conocer sus intereses sobre el agua subterránea y lo que es importante para usted para el futuro del agua subterránea en la Cuenca del Temescal.

INTRODUCTIONS

PRESENTACIONES

TIPS FOR A PRODUCTIVE DISCUSSION

CONSEJOS PARA UNA DISCUSIÓN PRODUCTIVA

- » One speaker at a time
Habla solo una persona la vez
- » Keep input concise
Sea conciso
- » Actively listen
Escuche activamente
- » Offer solutions
Ofrezca soluciones

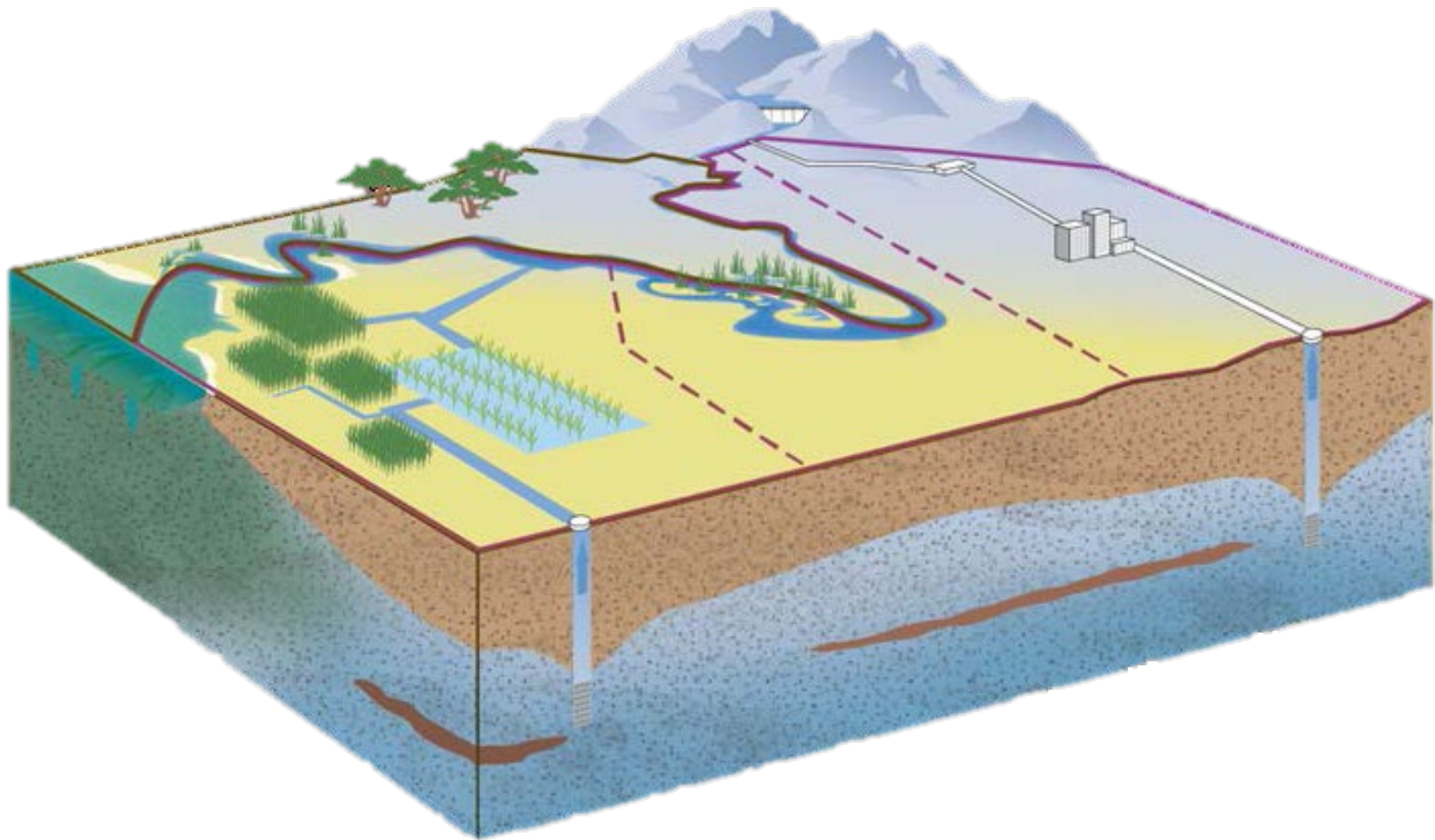
YOUR INPUT MATTERS SU OPINIÓN ES IMPORTANTE

- » The planning team will consider your comments as they prepare the Groundwater Sustainability Plan. El equipo de planificación considerará sus comentarios mientras prepara el Plan de sostenibilidad de aguas subterráneas.
- » Your input will be recorded, organized thematically, and presented in a workshop summary on the project website. Su aportación será registrada, organizada temáticamente y presentada en un resumen del taller en el sitio web del proyecto.

INTRODUCTION TO GROUNDWATER

INTRODUCCIÓN A LAS AGUAS SUBTERRÁNEAS

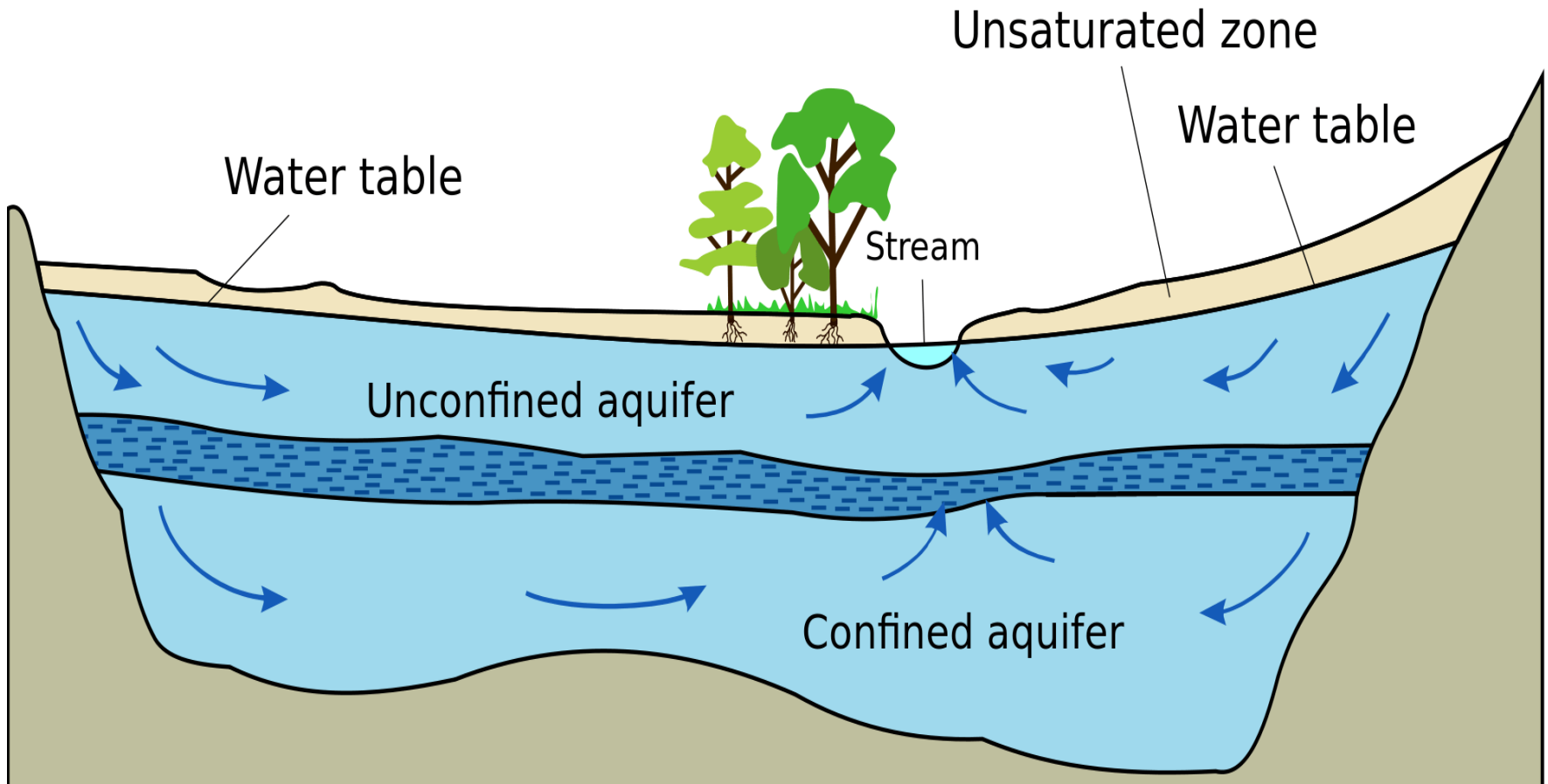
WHAT IS GROUNDWATER? ¿QUÉ SON LAS AGUAS SUBTERRÁNEAS?



HOW IS GROUNDWATER ACCESSED? ¿CÓMO SE ACCEDE A LAS AGUAS SUBTERRÁNEAS?

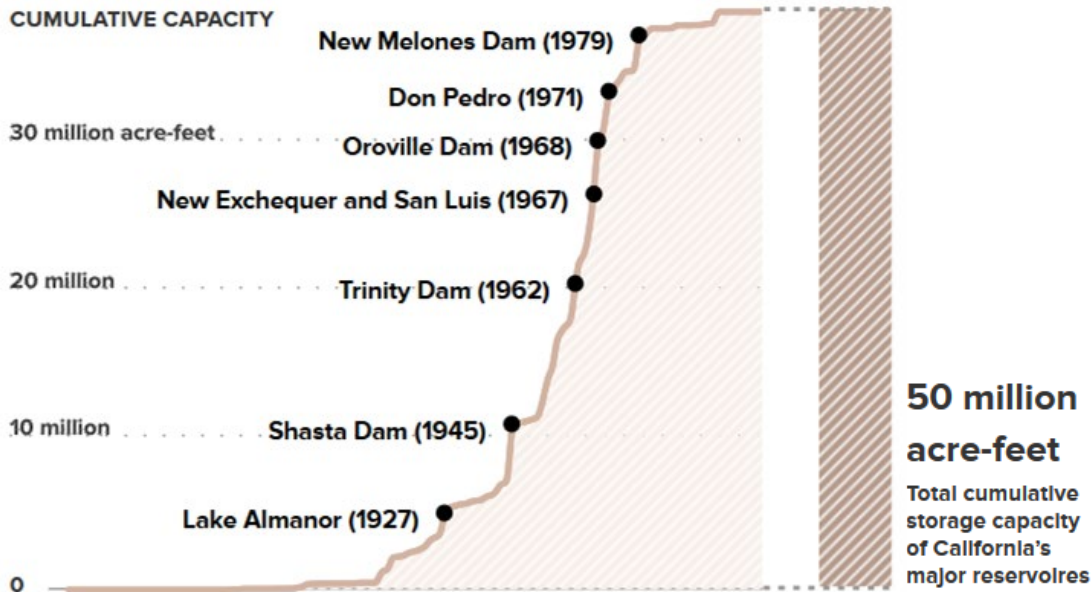


HOW DOES GROUNDWATER OCCUR? ¿CÓMO SURGEN LAS AGUAS SUBTERRÁNEAS?

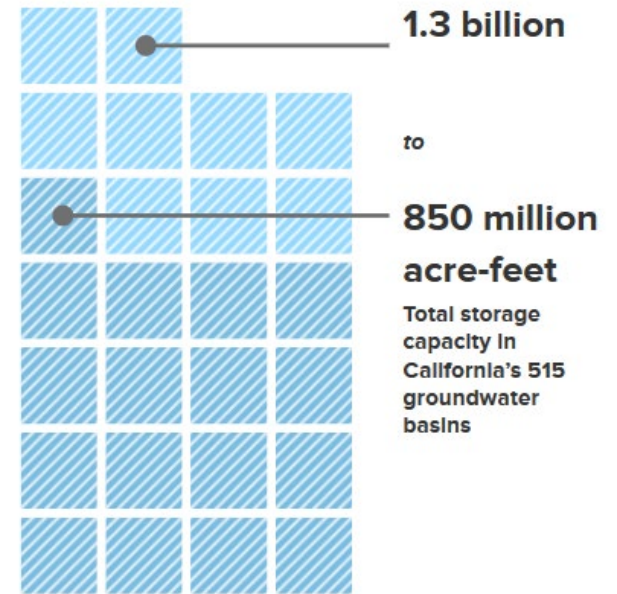


GROUNDWATER IS IMPORTANT LAS AGUAS SUBTERRÁNEAS SON IMPORTANTES

Reservoir Capacity



Groundwater Basin Capacity



DISCUSSION AND Q&A DISCUSIÓN / PREGUNTAS Y RESPUESTAS

- » What interests you about groundwater?
¿Qué le interesa sobre las aguas subterráneas?
- » Do you have questions or concerns about groundwater?
¿Tiene dudas o preocupaciones sobre las aguas subterráneas?
- » What else?
¿Qué más?

How to Raise Your Hand– Step 1
Cómo Levantar la Mano – Paso 1

You are viewing Jack Hughes 's screen

View Options

Speaker View

Exit Full Screen

TEMESCAL GSA

TEMESCAL GSP PUBLIC WORKSHOP#1

SEPTEMBER 29, 2020



TEMESCAL GROUNDWATER SUSTAINABILITY PLAN



Aly Scurlock

Mute Start Video Participants 2 Chat Share Screen Record Spanish

Leave

How to Raise Your Hand – Step 2
Cómo Levantar la Mano – Paso 2

TEMESCAL GSP PUBLIC WORKSHOP#1

SEPTEMBER 29, 2020

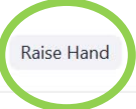


TEMESCAL GROUNDWATER SUSTAINABILITY PLAN



Jack Hughes

Aly Scurlock



Participants (2)

- AS Aly Scurlock (Me)
- JH Jack Hughes (Host)

Invite Mute Me **Raise Hand**

Zoom Group Chat

From Me to **Everyone**:
Did you lose your audio?

To: **Everyone**

Type message here...

Mute

Start Video

Participants 2

Chat

Share Screen

Record

Spanish

Leave

How to Mute and Start/Stop Video
Cómo Silenciar e Iniciar/Detener el Video

You are viewing Jack Hughes' screen

View Options

Speaker View

Exit Full Screen

TEMESCAL GSA

TEMESCAL GSP PUBLIC WORKSHOP#1

SEPTEMBER 29, 2020



TEMESCAL GROUNDWATER SUSTAINABILITY PLAN



Jack Hughes

Aly Scurlock

Mute Start Video

Participants 2

Chat

Share Screen

Record

Spanish

Leave

DISCUSSION AND Q&A

DISCUSIÓN / PREGUNTAS Y RESPUESTAS

- » What interests you about groundwater?
¿Qué le interesa sobre las aguas subterráneas?
- » Do you have questions or concerns about groundwater?
¿Tiene dudas o preocupaciones sobre las aguas subterráneas?
- » What else?
¿Qué más?

WHAT IS THE SUSTAINABLE
GROUNDWATER MANAGEMENT ACT?

¿QUÉ ES LA LEY DE GESTIÓN
SOSTENIBLE DE LAS AGUAS
SUBTERRÁNEAS?

SUSTAINABLE GROUNDWATER MANAGEMENT ACT (SGMA)

Landmark legislation in 2014

- » Recognizes that groundwater management in California is best accomplished locally
- » Includes State intervention if necessary
- » State assistance is also available

Legislación histórica en 2014

- » Reconoce que la gestión de las aguas subterráneas en California se logra mejor a nivel local
- » Incluye intervención estatal si es necesario
- » La asistencia estatal también está disponible

SUSTAINABLE GROUNDWATER MANAGEMENT ACT (SGMA)

Includes comprehensive requirements for:

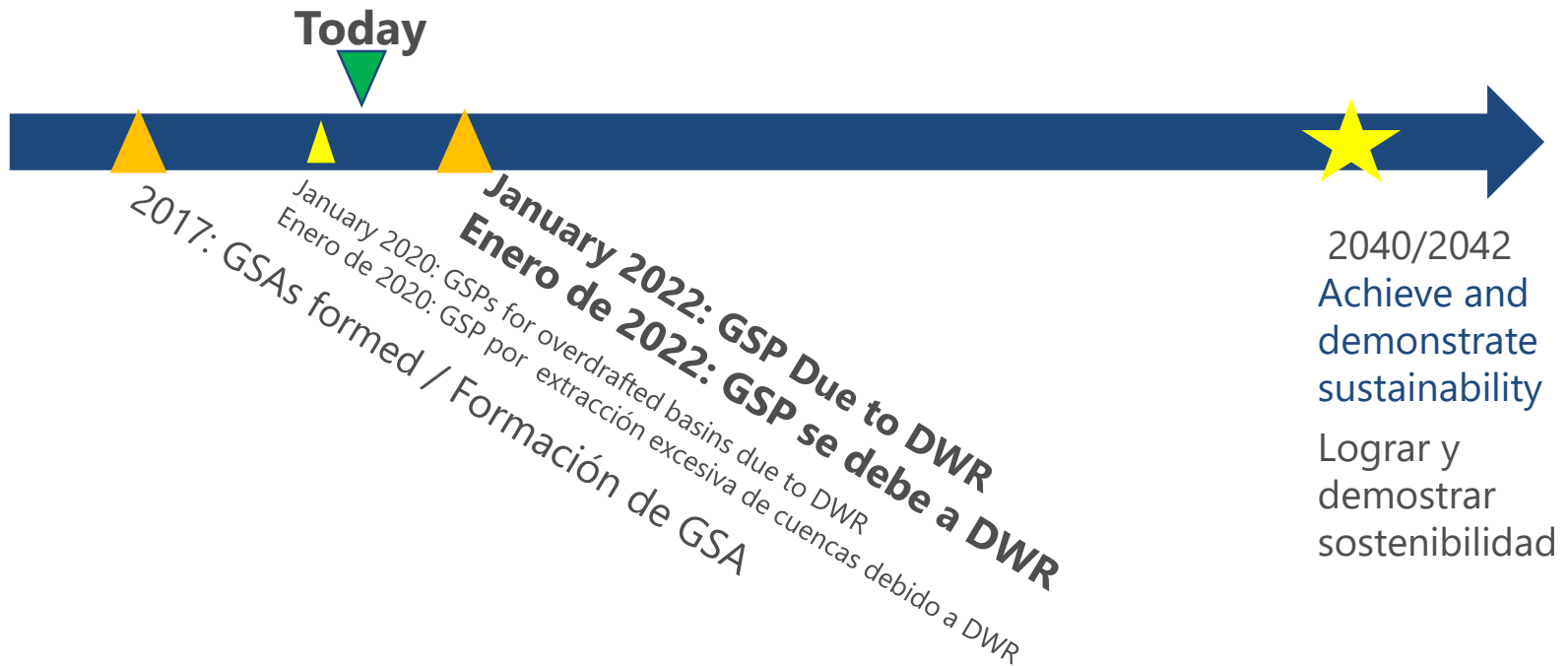
- » Forming groundwater sustainability agency (GSA)
- » Preparing groundwater sustainability plan (GSP)

Incluye diversos requisitos para:

- » Agencia de sostenibilidad de las aguas subterráneas (GSA)
- » Preparación de un plan de sostenibilidad de las aguas subterráneas (GSP)

SGMA HAS A REQUIRED TIMELINE

SGMA TIENE UN CRONOGRAMA REQUERIDO



INTRODUCTION TO THE TEMESCAL BASIN

INTRODUCCIÓN A LA CUENCA DEL TEMESCAL

THE TEMESCAL BASIN

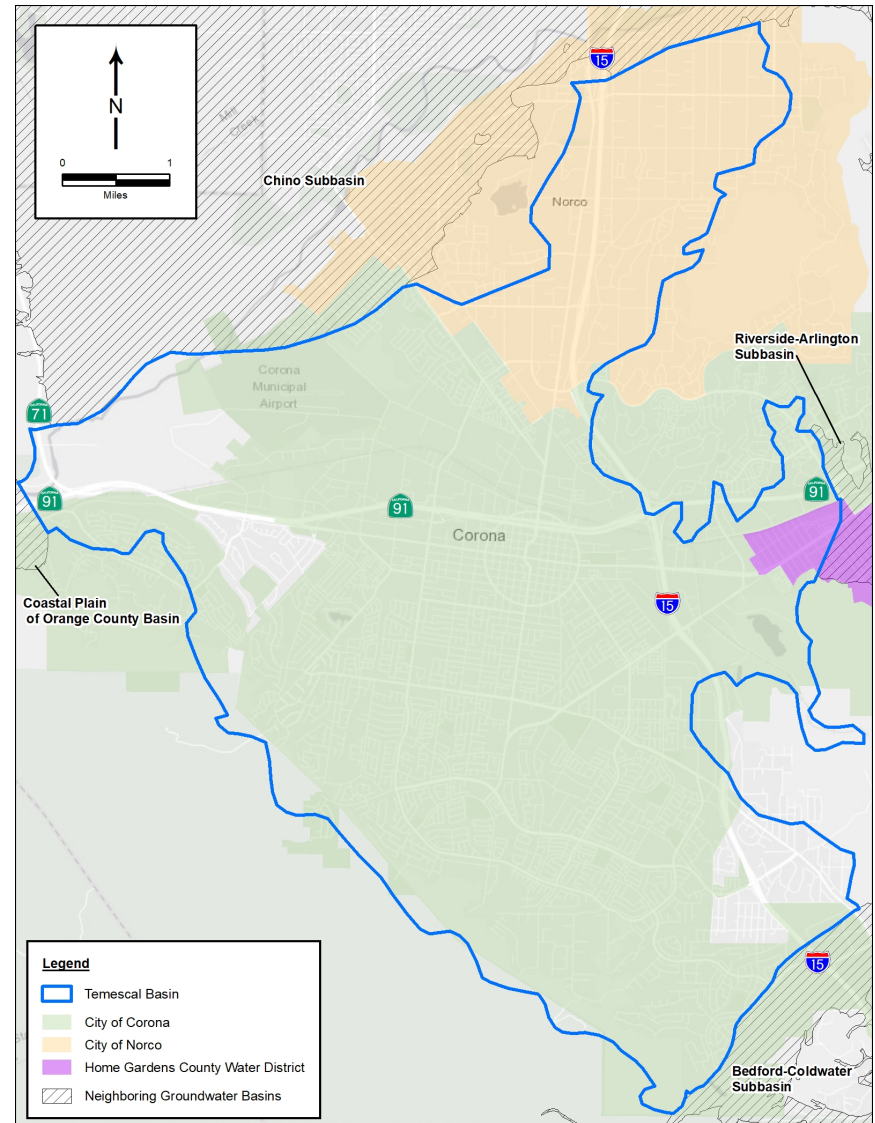
LA CUENCA DEL TEMESCAL

» DWR categorized as a Medium Priority Basin

Catalogada por DWR como Cuenca de prioridad media

» Contiguous and connected

Contigua y conectada



GSA ORGANIZATION / ORGANIZACIÓN



City of Corona



City of Norco



**Home Gardens
County Water District**

**Department of Water and Power
Departamento de Agua y Energía**

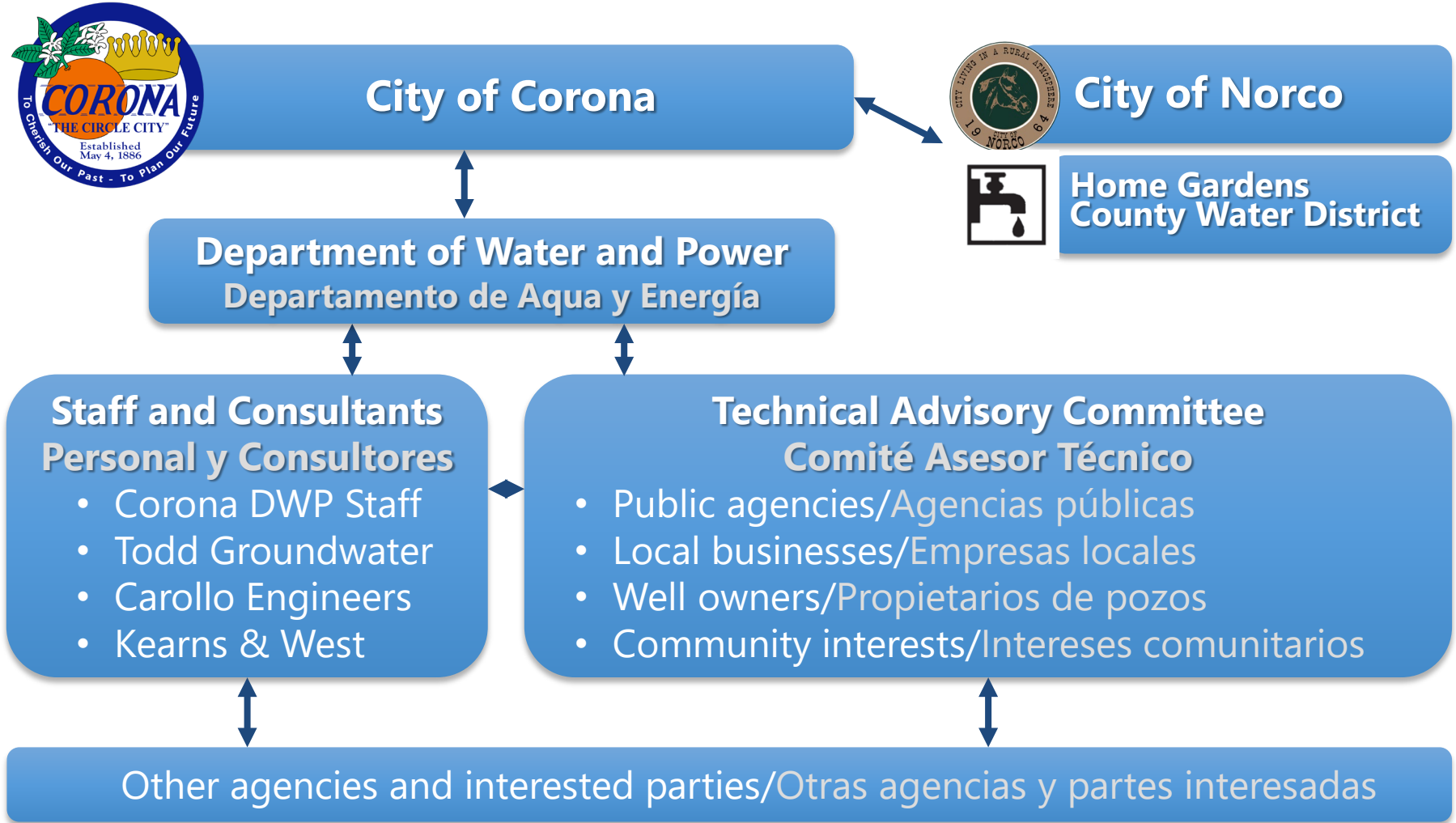
**Staff and Consultants
Personal y Consultores**

- Corona DWP Staff
- Todd Groundwater
- Carollo Engineers
- Kearns & West

**Technical Advisory Committee
Comité Asesor Técnico**

- Public agencies/Agencias públicas
- Local businesses/Empresas locales
- Well owners/Propietarios de pozos
- Community interests/Intereses comunitarios

Other agencies and interested parties/Otras agencias y partes interesadas



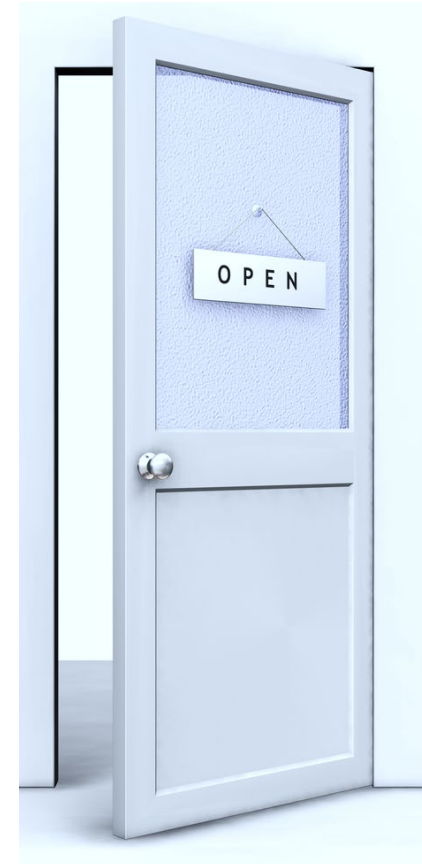
DRAFT PLAN AREA CHAPTER

ESQUEMA DEL ÁREA DEL PLAN

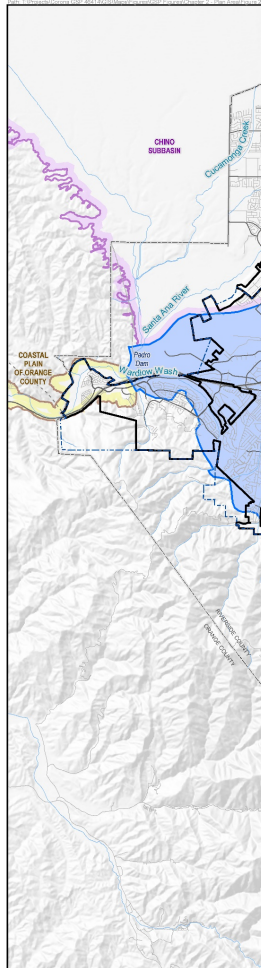
Description of Plan Area

Descripción del Área de Plan

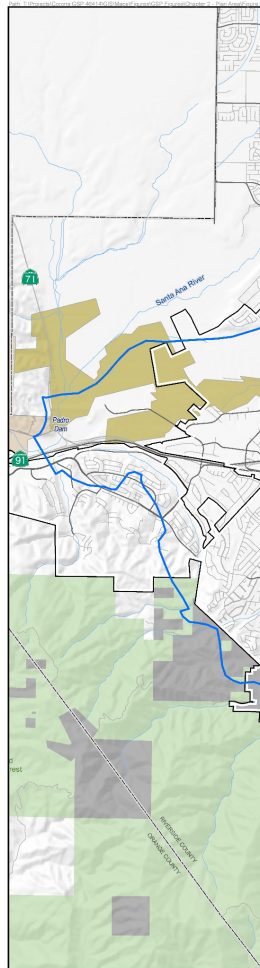
- » Jurisdictional boundaries
Limites jurisdiccionales
- » Existing monitoring and management
Monitoreo y gestión existentes
- » Well distribution
Distribución de pozos
- » Land use designations and description
Designaciones y descripción del uso de la tierra



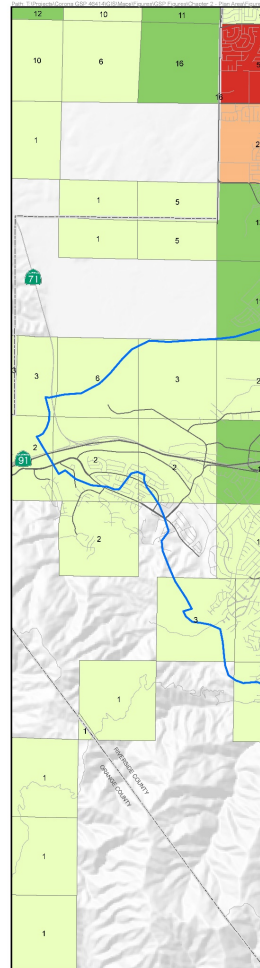
PLAN AREA / ÁREA DEL PLAN



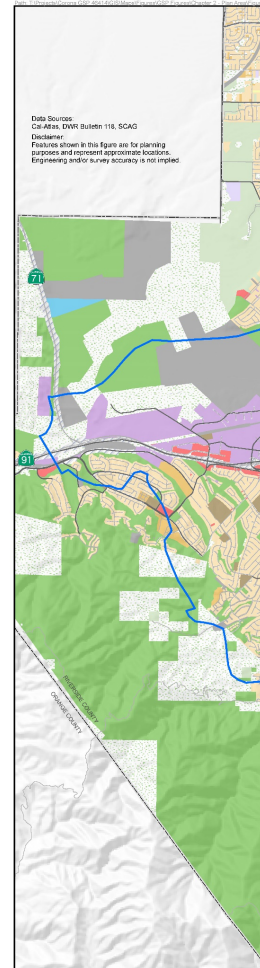
- Streams
- Highways
- Major Streets
- Minor Streets
- Water Body
- Cities
- County Boundary
- City of Corona Sphere of Influence
- Temescal Basin GSP Area
- Coastal Plain of Orange County
- Beckford-Coldwater Subbasin
- Chino Subbasin
- Elsinore Valley Subbasin
- Riverside-Arlington Subbasin



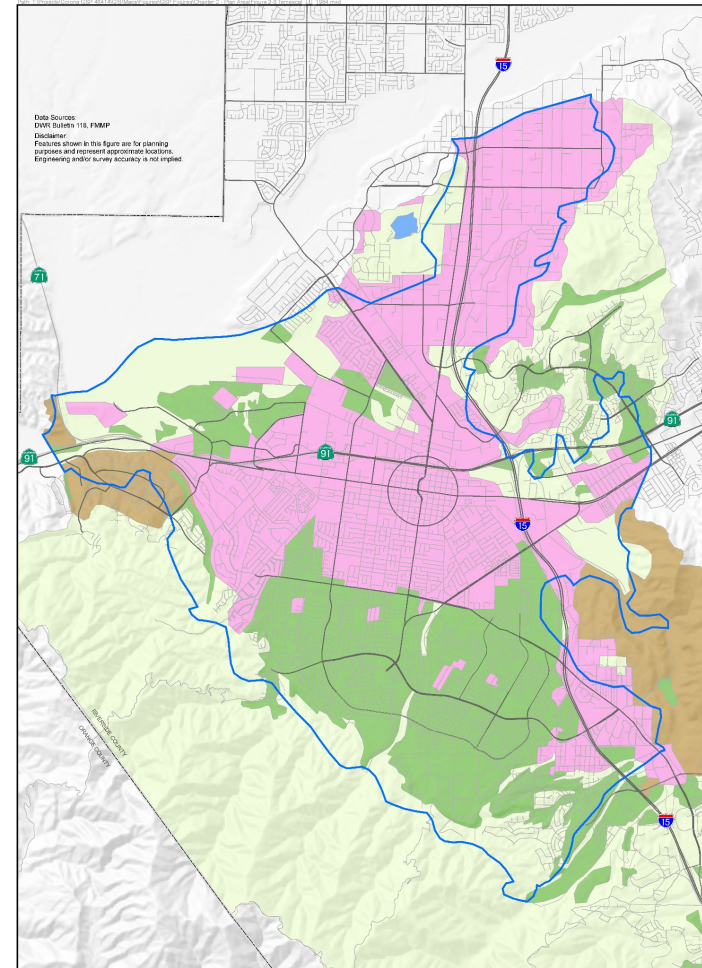
- Department of Defense
- State of California
- Federal Lands - Non Forest Service Land within USFS
- Federal Lands - US Forest Service
- Temescal Basin
- Riverside County



- All Wells by Section
- 1 - 10
- 11 - 20
- 21 - 40
- 41 - 80
- Temescal Basin



- Existing Land Use (SCAG, 2016)
- Agriculture
 - Commercial
 - Industrial
 - Military Installations
 - Mixed Residential, Mixed Use
 - Mobile Homes and Trailer Parks
 - Multi-Family Residential
 - Open Space/Recreation
 - Public
 - Rural Residential
 - Single Family Residential
 - Specific Plan



- 1984 Land Use
- Temescal Basin

0 0.5 1
Miles

↑
N

Figure 2-8
1984 Land Use

carroll
PROFESSIONAL ENGINEERS

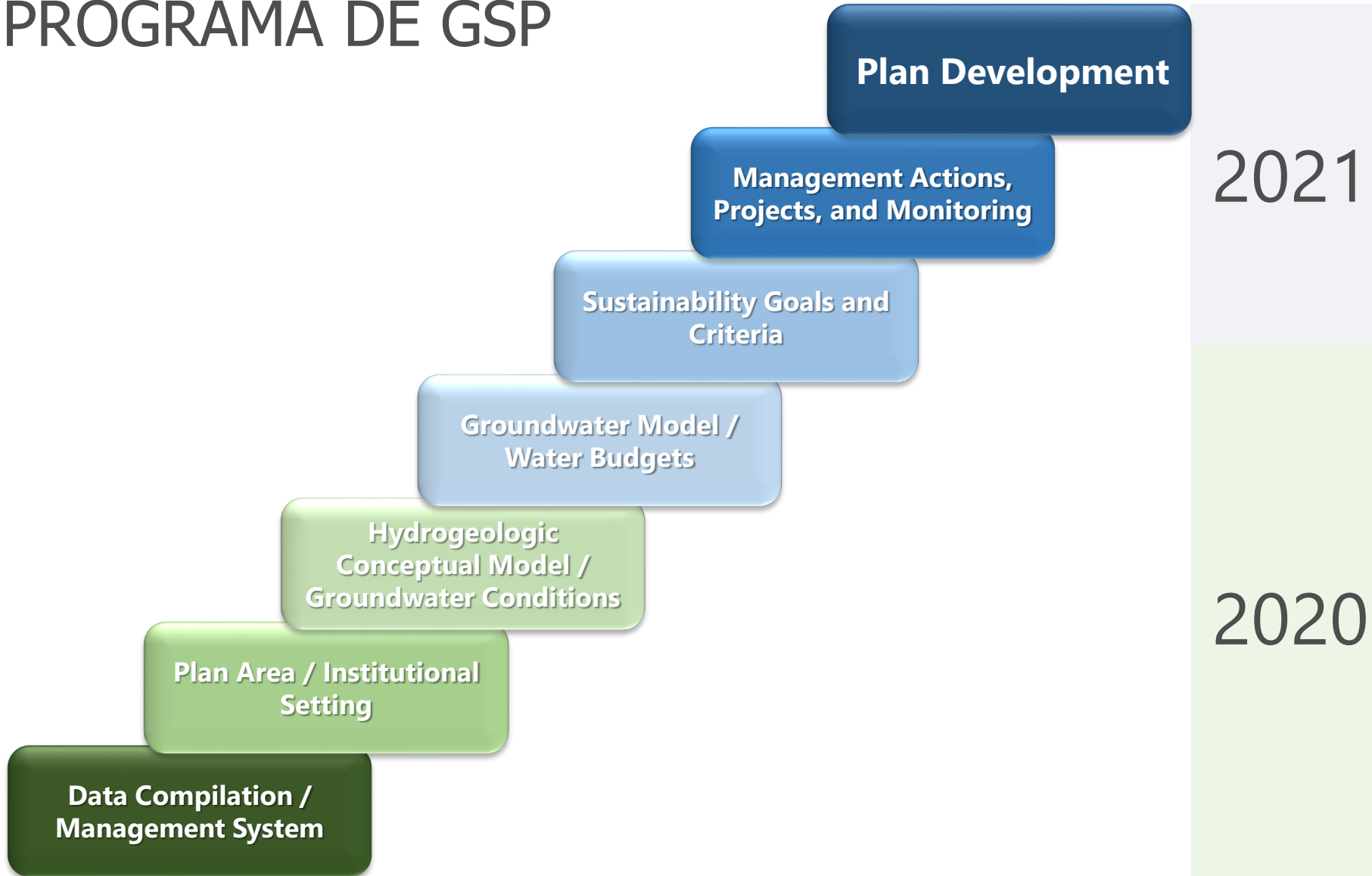
TODD
GROUNDWATER

GROUNDWATER SUSTAINABILITY PLAN DEVELOPMENT

DESARROLLO DE PLAN DE
SOSTENIBILIDAD DE AGUAS
SUBTERRÁNEAS

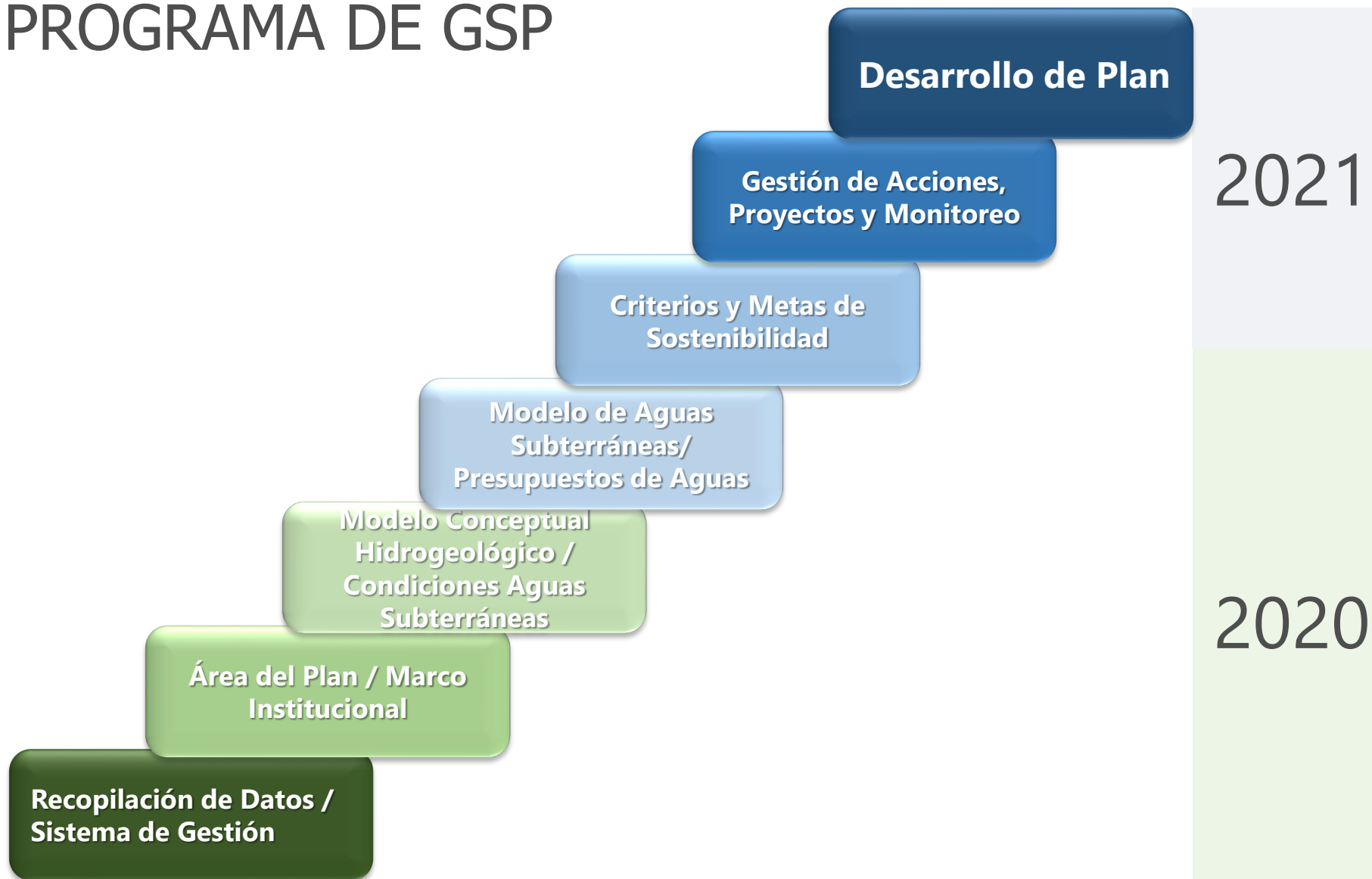
GSP SCHEDULE

PROGRAMA DE GSP



GSP SCHEDULE

PROGRAMA DE GSP



WHAT IS SUSTAINABILITY?

¿QUÉ ES LA SOSTENIBILIDAD?

SUSTAINABILITY CRITERIA

CRITERIOS DE SOSTENIBILIDAD



Chronic lowering of groundwater levels

Disminución crónica de los niveles de aguas subterráneas



Reduction of groundwater storage

Reducción del almacenamiento de aguas subterráneas



Degradation of water quality

Degradación de la calidad del agua



Depletions of interconnected surface water affecting beneficial uses

Agotamiento de las aguas superficiales interconectadas que afectan a los usos beneficiosos



Land subsidence affecting land uses

El hundimiento de la tierra que afecta a los usos de la tierra



Seawater intrusion (not applicable here)

Intrusión de agua de mar (no aplicable aquí)

EXAMPLE SUSTAINABILITY CRITERIA: GROUNDWATER LEVELS



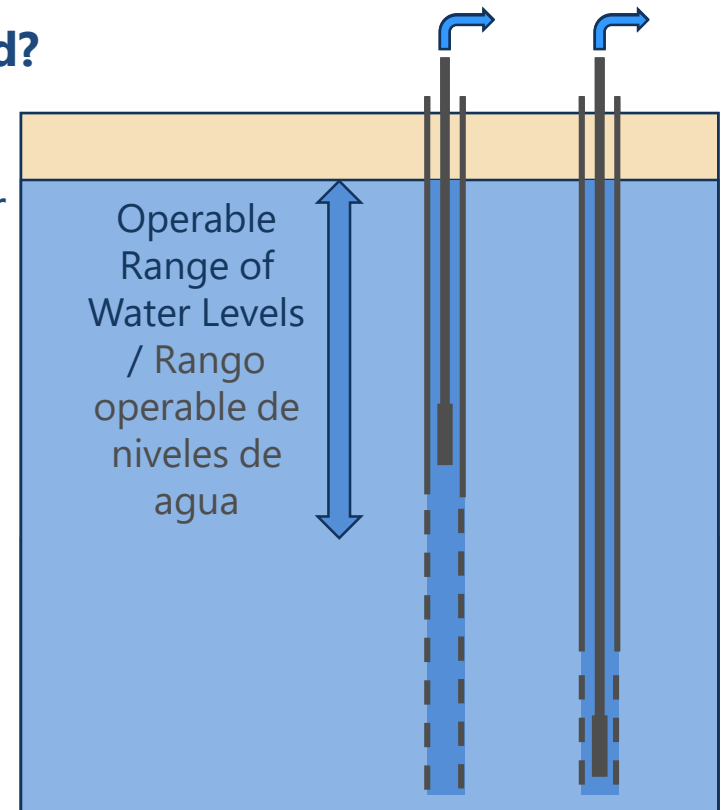
EJEMPLO DE CRITERIOS DE SOSTENIBILIDAD: NIVELES DE AGUAS SUBTERRÁNEAS

What undesirable effects do we want to avoid?

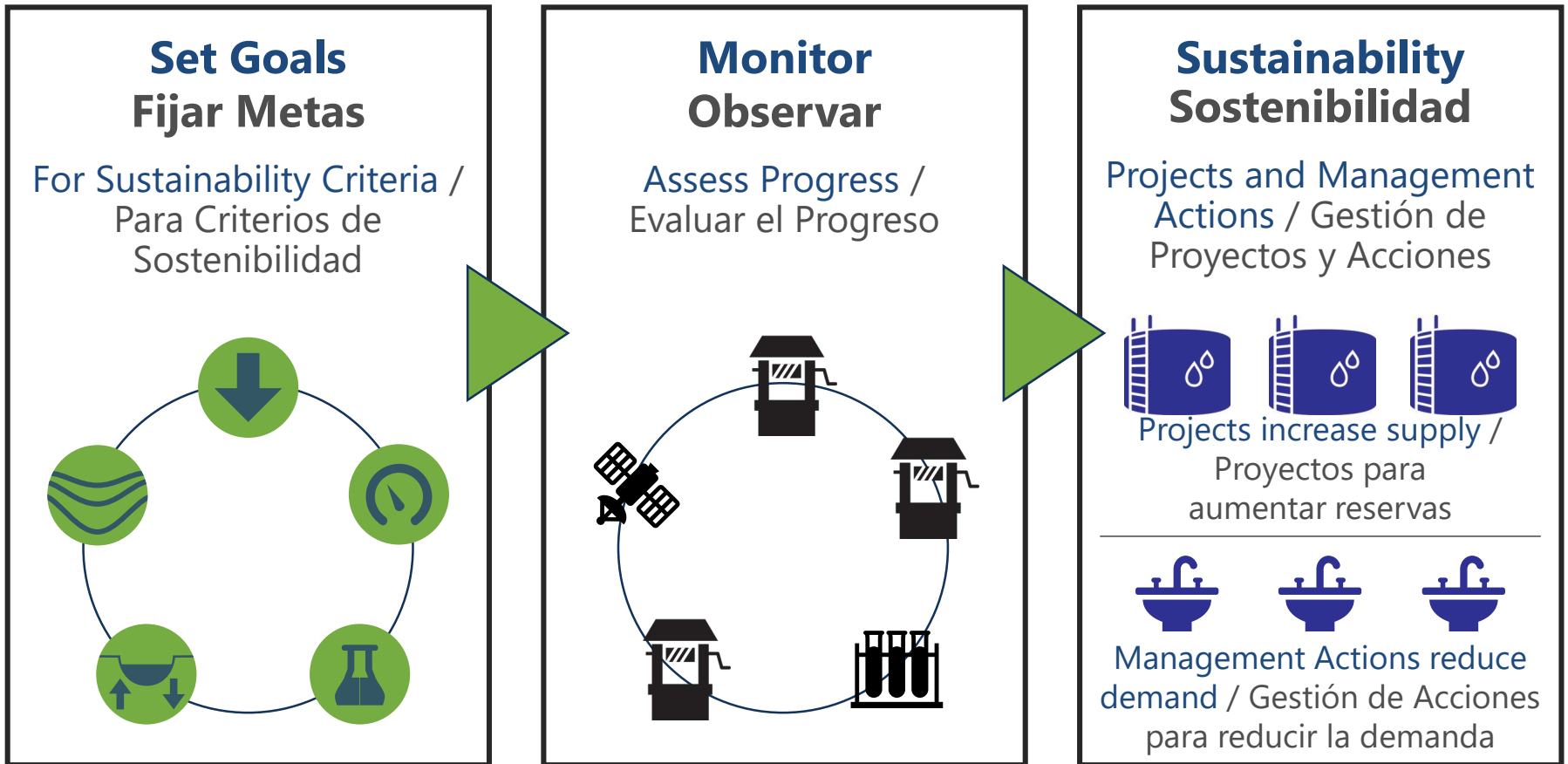
- » Impacts to shallow wells?
- » Maintenance of municipal and industrial water supply?
- » Other?

¿Qué efectos indeseables queremos evitar?

- » ¿Impactos en pozos poco profundos?
- » ¿Mantenimiento del suministro de agua municipal e industrial?
- » ¿Otros?



ACHIEVING SUSTAINABILITY LOGRAR LA SOSTENIBILIDAD



DISCUSSION AND Q&A

DISCUSIÓN / PREGUNTAS Y RESPUESTAS

» What water supply and quality goals are important to you?

¿Qué objetivos de suministro y calidad de agua son importantes para usted?

» Is there information the project team should review?

¿Hay información que el equipo del proyecto debe revisar?

» What else?

¿Qué más?

HOW CAN YOU GET INVOLVED?
¿CÓMO PUEDE INVOLUCRARSE?

PUBLIC WORKSHOPS TALLERES PÚBLICOS

Draft GSP Presentation

Plan Development

Public Workshop 3
Management Actions

**Management Actions,
Projects, and Monitoring**

**Sustainability Goals and
Criteria**

Public Workshop 2
Sustainability Criteria

**Groundwater Model /
Water Budgets**

**Hydrogeologic
Conceptual Model /
Groundwater Conditions**

2021

2020

Public Workshop 1
Kickoff and Introduction to
SGMA

**Plan Area / Institutional
Setting**

**Data Compilation /
Management System**

PUBLIC WORKSHOPS TALLERES PÚBLICOS




OTHER MEETINGS

OTRAS REUNIONES

- » Technical Advisory Committee Meetings
Reuniones del Comité Asesor Técnico
- » Updates at City Council and Board Meetings
Actualizaciones en las reuniones del consejo
y la junta de la ciudad
- » Adoption Hearing for Final GSP
Audiencia de adopción del GSP final

WEBSITE SITIOS WEB



CITY OF
CORONA
THE CIRCLE CITY

DEPARTMENT OF WATER & POWER


ABOUT US
CUSTOMER CARE
RESIDENTS
BUSINESSES
EFFICIENCY
CONSTRUCTION

- About DWP
- DWP News
- History
- Planning for Our Future
- + Water Quality
- + Learn more...
- Groundwater
 - Community Involvement
 - Frequently Asked Questions
 - Comment Form

Government » Departments/Divisions » Department of Water and Power » About DWP

SUSTAINABLE GROUNDWATER MANAGEMENT

Font Size: [+](#) [-](#) [+](#) Share & Bookmark [Feedback](#) [Print](#)



For many decades, the City of Corona (Corona), City of Norco (Norco), and Home Gardens County Water District (HGCWD) have been steadfast stewards of groundwater resources in the Temescal Groundwater Subbasin, actively managing groundwater to protect water quality and maintain a reliable and sustainable water supply. For Corona, Norco, HGCWD, and other water agencies, it's getting more and more difficult to ensure long-term groundwater sustainability, with climate variability, growth in urban water use, availability and cost of imported water, and other factors.

To assist water agencies like Corona, Norco, and HGCWD in meeting these significant groundwater challenges, the state-wide Sustainable Groundwater Management Act was passed in 2014. This law outlines new requirements and tools for ensuring the long-term sustainability of these critical sources of water supply.

Updates

Agendas and presentations from previous meetings and workshops can be found on the [Community Involvement webpage](#).

Learn more!

Click on a heading to expand and learn more!

- About Groundwater & Our Basin** >
- About the SGMA** >

HOW TO KEEP IN TOUCH CÓMO MANTENERSE EN CONTACTO

- » Sign up for the mailing list by emailing Groundwater@CoronaCA.gov
Regístrese en la lista de correo enviando un correo electrónico a Groundwater@CoronaCA.gov
- » Visit the website to view information, review draft chapters and other materials, and to submit comments : www.CoronaCA.gov/Groundwater
Visite el sitio web para ver información, revisar borradores de capítulos y otros materiales, y enviar comentarios: www.CoronaCA.gov/Groundwater

THANK YOU
GRACIAS