


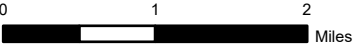
Cannabis Zoning Index Map



Legend

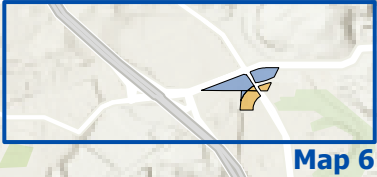
- Possible locations for cannabis businesses (1,000 ft buffer)
- Possible locations for all cannabis businesses except storefront sales (600 ft buffer)

Geographic Information Services
 Date Exported: 2/8/2021 2:38 PM
 Folder: G:\Projects\Council\CannabisLocations\



Cannabis Permit applicants are responsible for verifying separation requirements from sensitive land uses prior to submitting a city application. This map is for initial consideration and is not binding or all inclusive. This map is a "high level" assessment that reflects a single point in time.

City separation requirements may be different than those established by California state law. Applicants must adhere to state and city requirements. When they conflict, the most restrictive shall apply.



This map is intended for general information and planning purposes. The City of Corona is not responsible for any errors or omissions.