

# CITY OF CORONA

Annual Report



FISCAL YEAR 2020-21  
COMMUNITY FACILITIES DISTRICT NO. 2016-1  
(PUBLIC SERVICES)



SPICER CONSULTING  
GROUP

# Table of Contents

---

## **Sections**

1	District Profile	1
2	Special Tax Information	1
3	Payment History	2

## **Tables**

2-1	Maximum Special Tax	1
2-2	Special Tax Breakdown	1
3-1	Delinquency Summary	2

## **Appendix**

Appendix A – Boundary Maps



## Community Facilities District No. 2016-1 (Public Services)

### District Profile

#### *Project Description*

The Community Facilities District No. 2016-1 (Public Services) (the “CFD No. 2016-1” or the “District”) was formed to finance the annual costs of providing police, fire protection, and paramedic services being funded by the Special Tax for the CFD No. 2016-1.

#### *Location*

The CFD No. 2016-1 is a Citywide district and has multiple zones. Please see the Boundary Maps in Appendix A for more detailed boundaries.

#### *Bond Profile and Principal Amount of Bonds Outstanding*

The CFD No. 2016-1 is a non-bonded district.

### Special Tax Information

#### *Special Tax*

The amount collected each year is determined by the Special Tax formula and can vary from year to year, but shall not exceed the maximum authorized (or permitted) Special Tax rates. The amount levied for Fiscal Year 2020-21 tax year is \$468,299.40. The Maximum Special Tax rates for Fiscal Year 2020-21 are as follows:

On July 1, commencing on July 1, 2017 the Maximum Special Tax, shall increase by i) the percentage increase in the Consumer Price Index (All Items) for Los Angeles – Riverside – Orange County (1982 – 84 = 100) since the beginning of the preceding Fiscal Year, or ii) by four percent (4.00%), whichever is greater.

*Table 2-1  
Maximum Special Tax Rates*

Land Use Category	Taxable Unit	Maximum Special Tax
Developed Single Family Residential Property	Residential Unit	\$603.64
Developed Multi-Family Residential Property	Residential Unit	\$418.80

*Table 2-2  
Special Tax Breakdown*

Development Zones	Parcels	Units	Levied Amount	Maximum Special Tax	% of Maximum Special Tax
Zone 1	146	146	\$88,131.44	\$88,131.44	100.00%
Zone 3	152	148	\$52,768.80	\$52,768.80	100.00%
Zone 4	92	92	\$55,534.88	\$55,534.88	100.00%
Zone 5	222	238	\$143,666.32	\$143,666.32	100.00%
Zone 6	231	79	\$47,687.56	\$47,687.56	100.00%
Zone 7	1	149	\$62,401.20	\$62,401.20	100.00%
Zone 8	32	25	\$15,091.00	\$15,091.00	100.00%
Zone 11	5	4	\$2,414.56	\$2,414.56	100.00%
Zone 17	1	1	\$603.64	\$603.64	100.00%
<b>Total</b>	<b>882</b>	<b>882</b>	<b>\$468,299.40</b>	<b>\$468,299.40</b>	<b>100.00%</b>

#### *Termination of Special Tax*

For each Fiscal Year the City of Corona provides services the Special Tax shall be levied on all Assessor's Parcels subject to the Special Tax as necessary to satisfy the Special Tax Requirement. The Special Tax shall be in perpetuity as long as the City of Corona provides the services to the District.

#### *Payment History*

Delinquencies are calculated through September 2020 and may reflect parcels that may already be on a payment plan.

#### *Delinquency Rate for Fiscal Year 2019-20*

As of September 2020, the delinquency rate of CFD No. 2016-1 for Fiscal Year 2019-20 is 0.0%

#### *Information Concerning Delinquent Parcels*

CFD No. 2016-1 delinquency information as of September 2020 is illustrated below:

*Table 3-1  
Delinquency Summary*

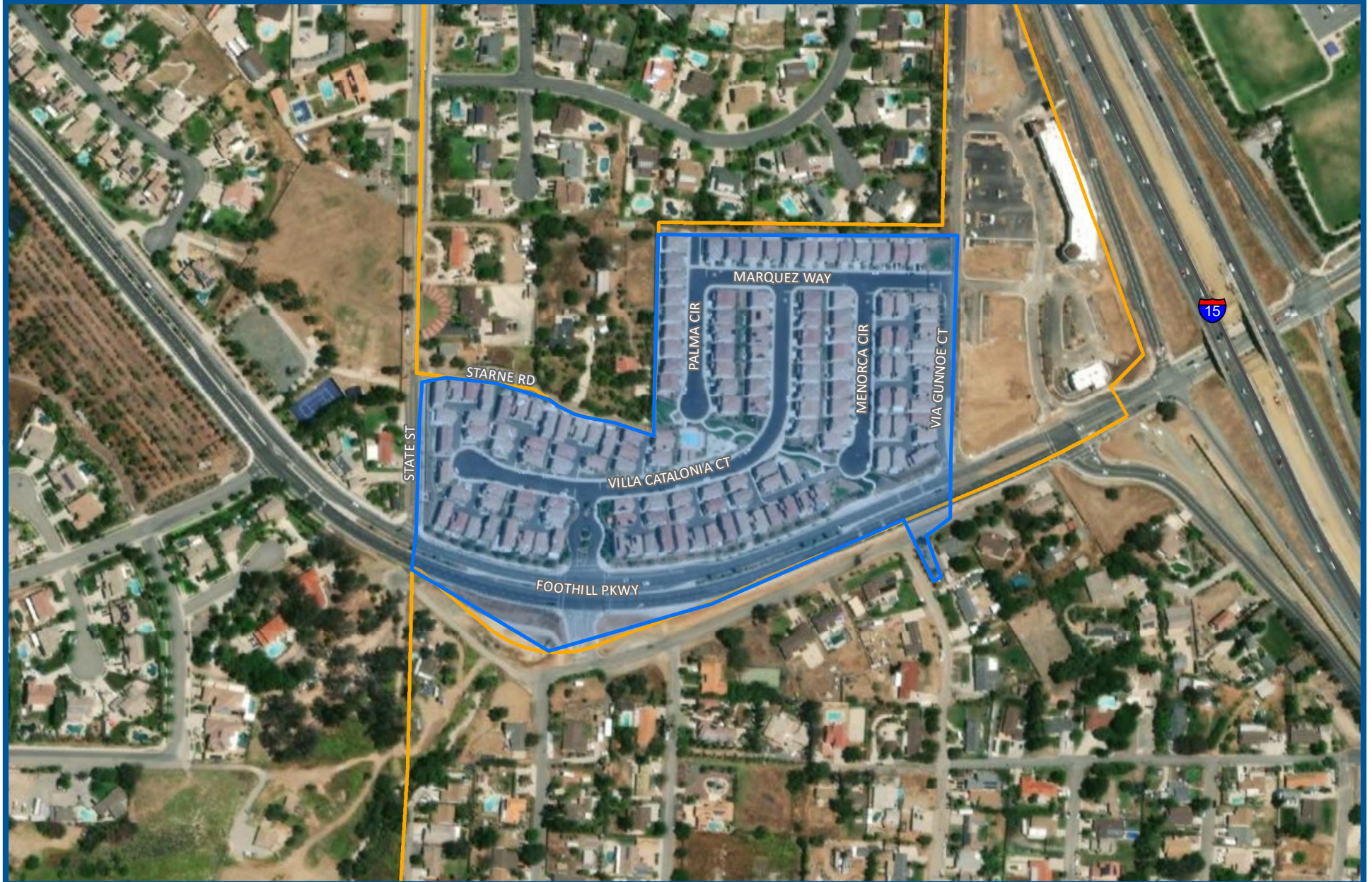
Fiscal Year	Levied		Delinquency		
	Parcels	Amount	Parcels	Amount	% Del.
2017-18	50	\$33,024.00	0	\$0.00	0.00%
2018-19	118	\$100,046.80	1	\$558.10	0.56%
2019-20	327	\$276,841.10	5	\$1,304.88	0.47%
<b>Total</b>		<b>\$409,911.90</b>	<b>5</b>	<b>\$1,862.98</b>	<b>0.45%</b>

# APPENDIX A

## Boundary Maps



SPICER CONSULTING  
G R O U P



## BOUNDARY MAP

COMMUNITY FACILITIES DISTRICT NO. 2016-1  
ZONE 1



## BOUNDARY MAP

COMMUNITY FACILITIES DISTRICT NO. 2016-1  
ZONE 2



## BOUNDARY MAP

COMMUNITY FACILITIES DISTRICT NO. 2016-1  
ZONE 3







## BOUNDARY MAP

COMMUNITY FACILITIES DISTRICT NO. 2016-1  
ZONE 4



### BOUNDARY MAP

COMMUNITY FACILITIES DISTRICT NO. 2016-1  
ZONE 5





## BOUNDARY MAP

COMMUNITY FACILITIES DISTRICT NO. 2016-1  
ZONE 6



## BOUNDARY MAP

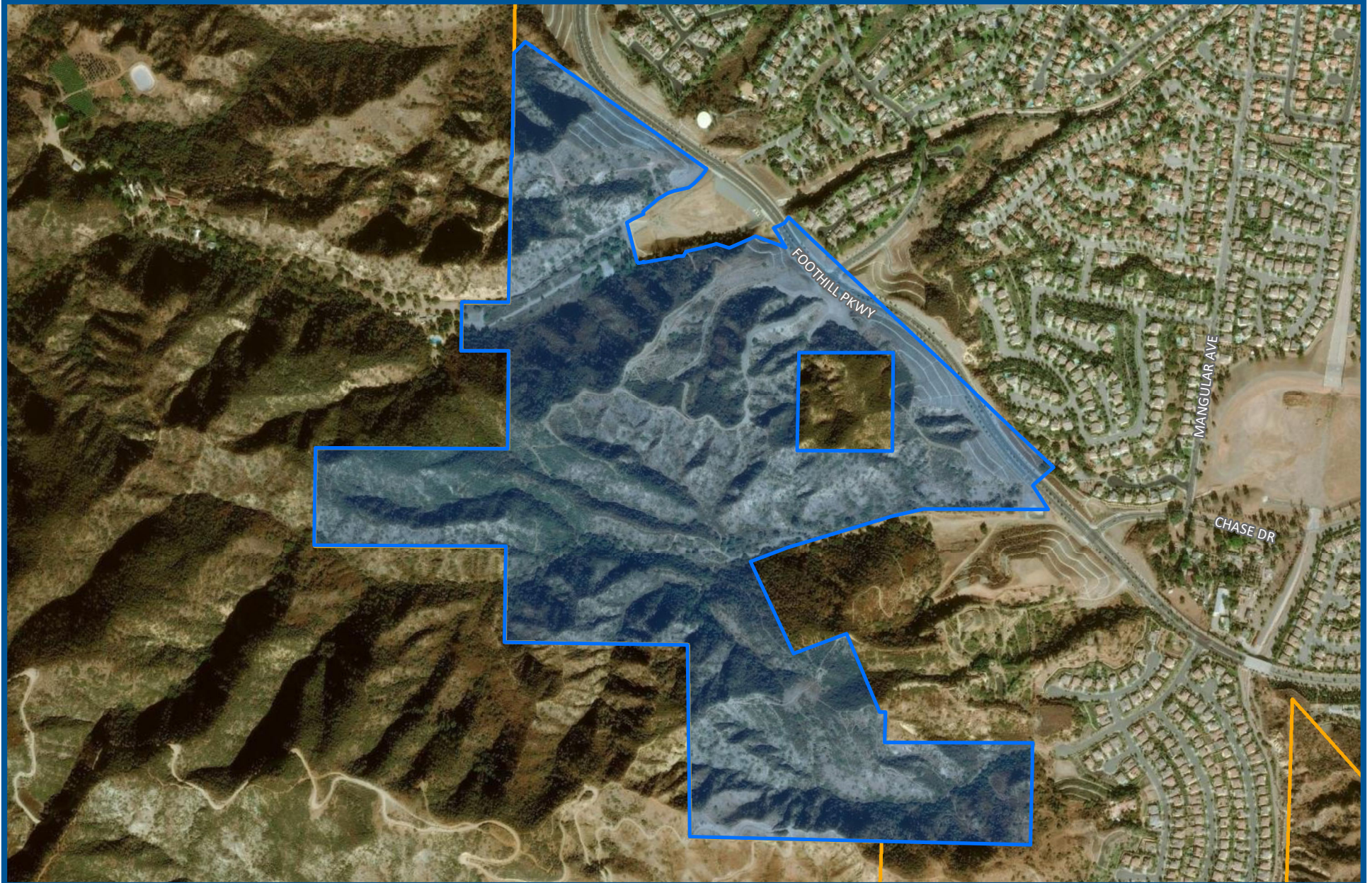
COMMUNITY FACILITIES DISTRICT NO. 2016-1  
ZONE 7



## BOUNDARY MAP

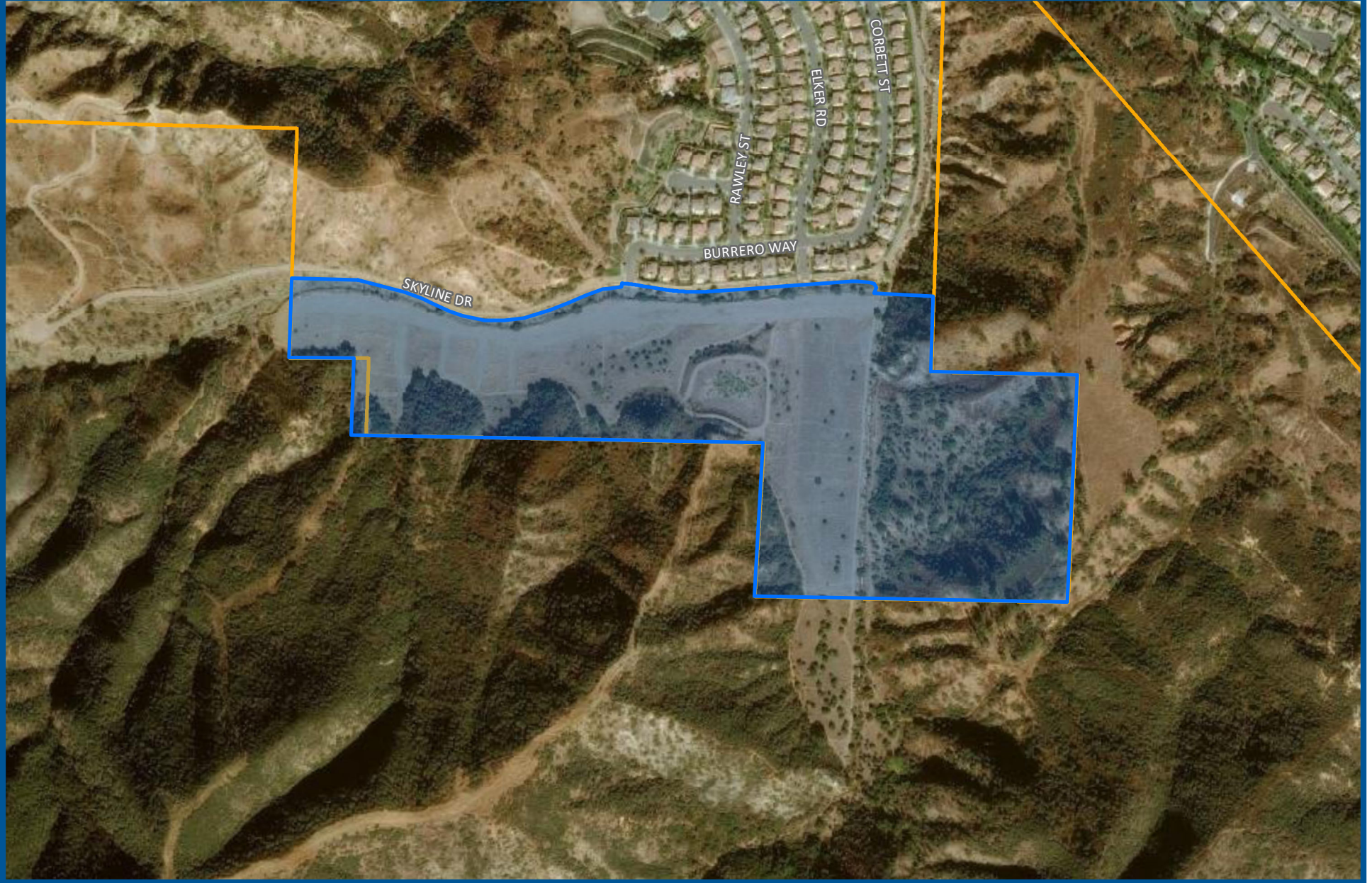
COMMUNITY FACILITIES DISTRICT NO. 2016-1  
ZONE 8





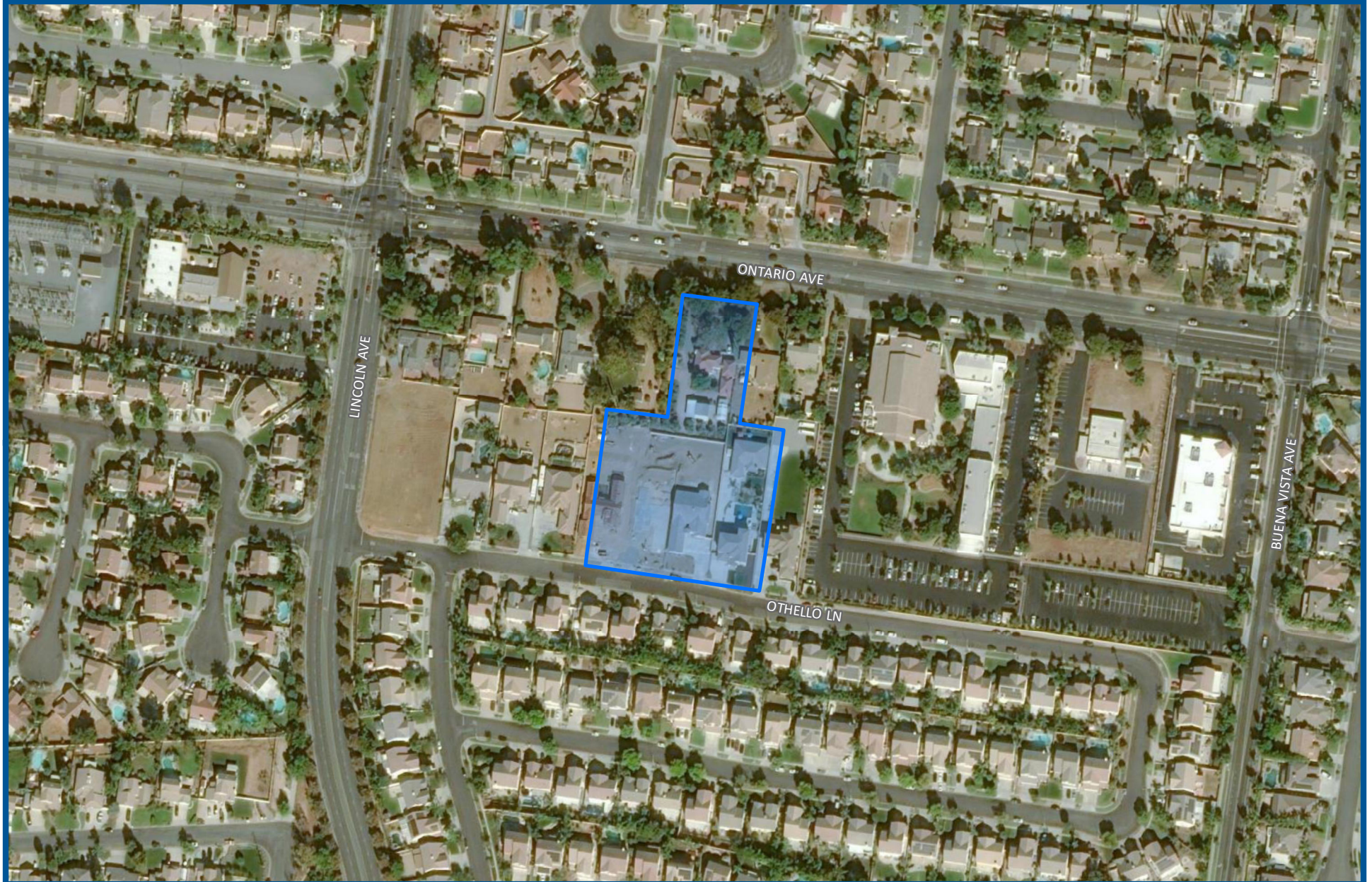
## BOUNDARY MAP

COMMUNITY FACILITIES DISTRICT NO. 2016-1  
ZONE 9



## BOUNDARY MAP

COMMUNITY FACILITIES DISTRICT NO. 2016-1  
ZONE 10



## BOUNDARY MAP

COMMUNITY FACILITIES DISTRICT NO. 2016-1  
ZONE 11







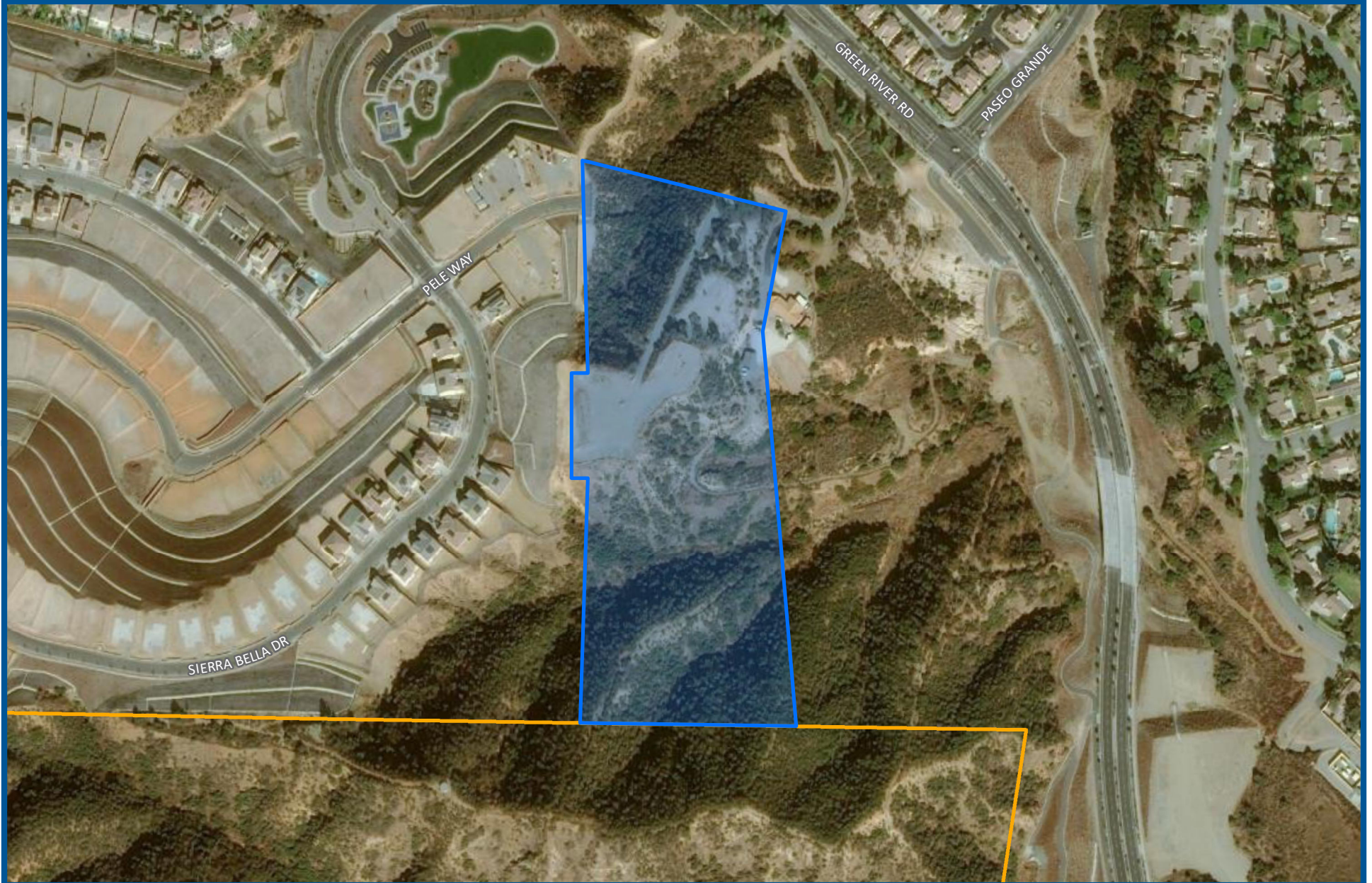
## BOUNDARY MAP

COMMUNITY FACILITIES DISTRICT NO. 2016-1  
ZONE 12



## BOUNDARY MAP

COMMUNITY FACILITIES DISTRICT NO. 2016-1  
ZONE 13



## BOUNDARY MAP

COMMUNITY FACILITIES DISTRICT NO. 2016-1  
ZONE 14



## BOUNDARY MAP

COMMUNITY FACILITIES DISTRICT NO. 2016-1  
ZONE 15



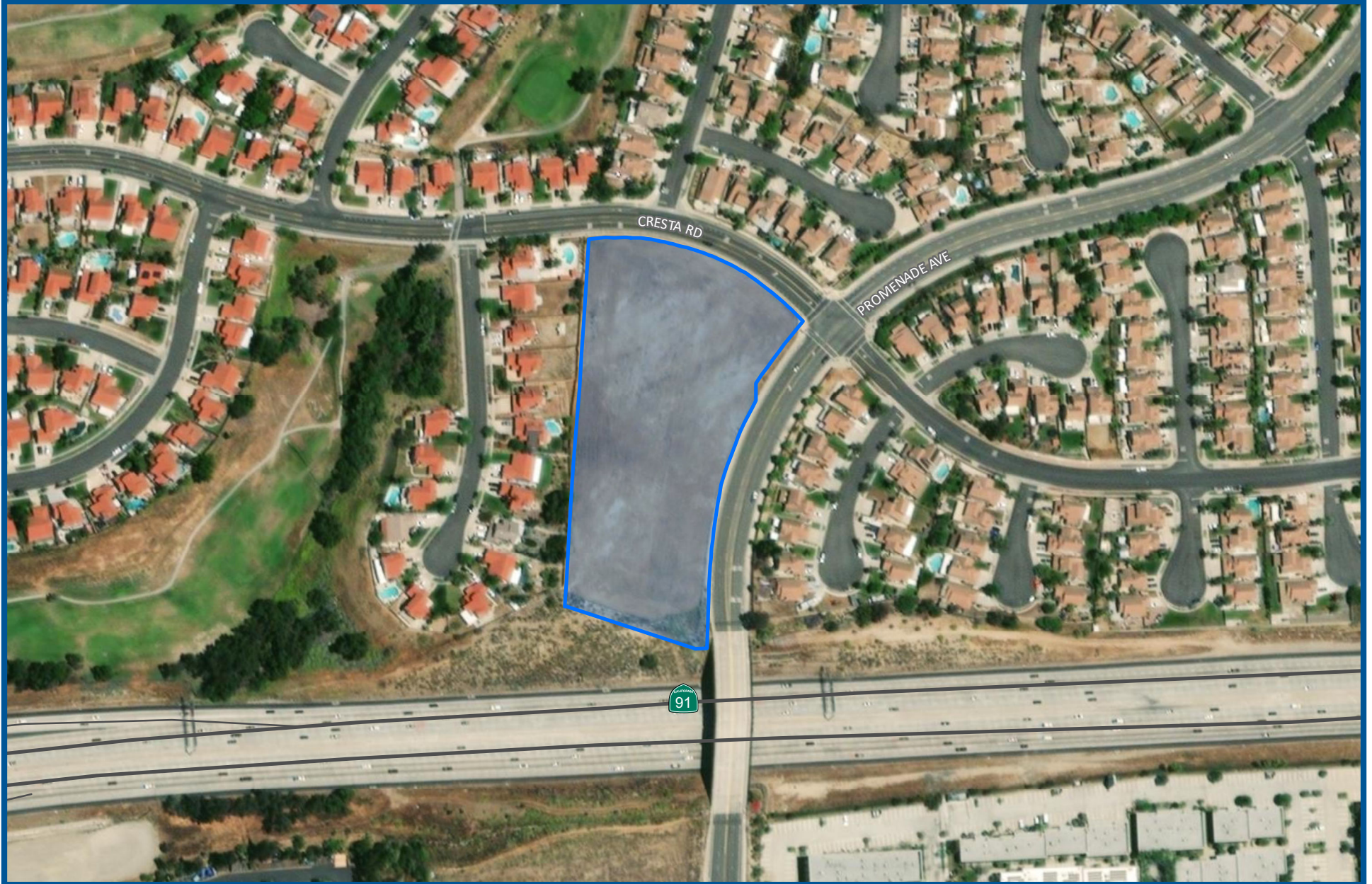
## BOUNDARY MAP

COMMUNITY FACILITIES DISTRICT NO. 2016-1  
ZONE 16



## BOUNDARY MAP

COMMUNITY FACILITIES DISTRICT NO. 2016-1  
ZONE 17



## BOUNDARY MAP

COMMUNITY FACILITIES DISTRICT NO. 2016-1  
ZONE 18



SPICER CONSULTING  
GROUP