



# McKinley Street Grade Separation

# Project Overview

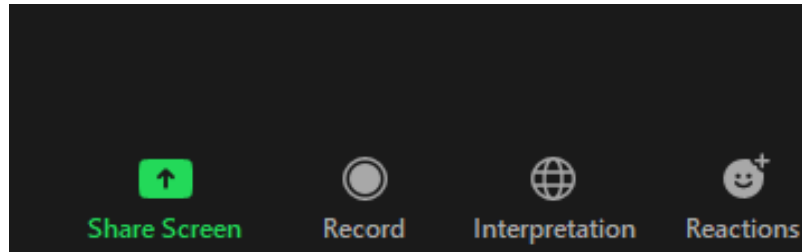


**Mark Thomas, Biggs  
Cardosa & Arellano  
Associates**

May 4, 2021

# Interpretation

→ Para oír la presentación en español, haga clic en el botón de traducción de Zoom en la parte inferior de la pantalla.



# Meeting Format / Formato de la Reunión



→ **Today's meeting is being recorded and will be posted on the project website.**

- *La reunión de hoy está siendo grabada y se publicará en el sitio web del proyecto.*



→ **Participant videos and mics will remain off for the duration of the meeting.**

- *Las cámaras de video y micrófonos permanecerán apagados durante la reunión.*



→ **A Q&A session will follow the presentation. Type in your questions/comments using the Zoom Q&A function during the presentation or during the Q&A Session.**

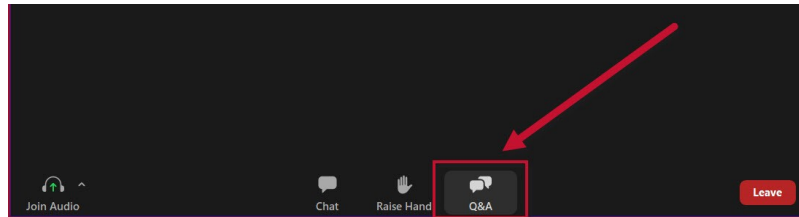
- *Una sesión de preguntas y respuestas seguirá la presentación. Escriba su pregunta o comentario en el cuadro de Q&A (preguntas y respuestas) de Zoom durante la presentación o durante la sesión de preguntas y respuestas.*

# How to Submit Questions and Comments

## → Zoom Meeting

- **Q&A function:** You may submit all questions and comments using the Zoom “Q&A” function.

*Función de preguntas y respuestas: puede enviar todas las preguntas y comentarios utilizando la función de Q&A (preguntas y respuestas) de Zoom.*



- **Via email:** Submit your questions and comments to [McKinleyGS@arellanoassociates.com](mailto:McKinleyGS@arellanoassociates.com).  
*Por correo electrónico: envíe sus preguntas y comentarios a [McKinleyGS@arellanoassociates.com](mailto:McKinleyGS@arellanoassociates.com).*

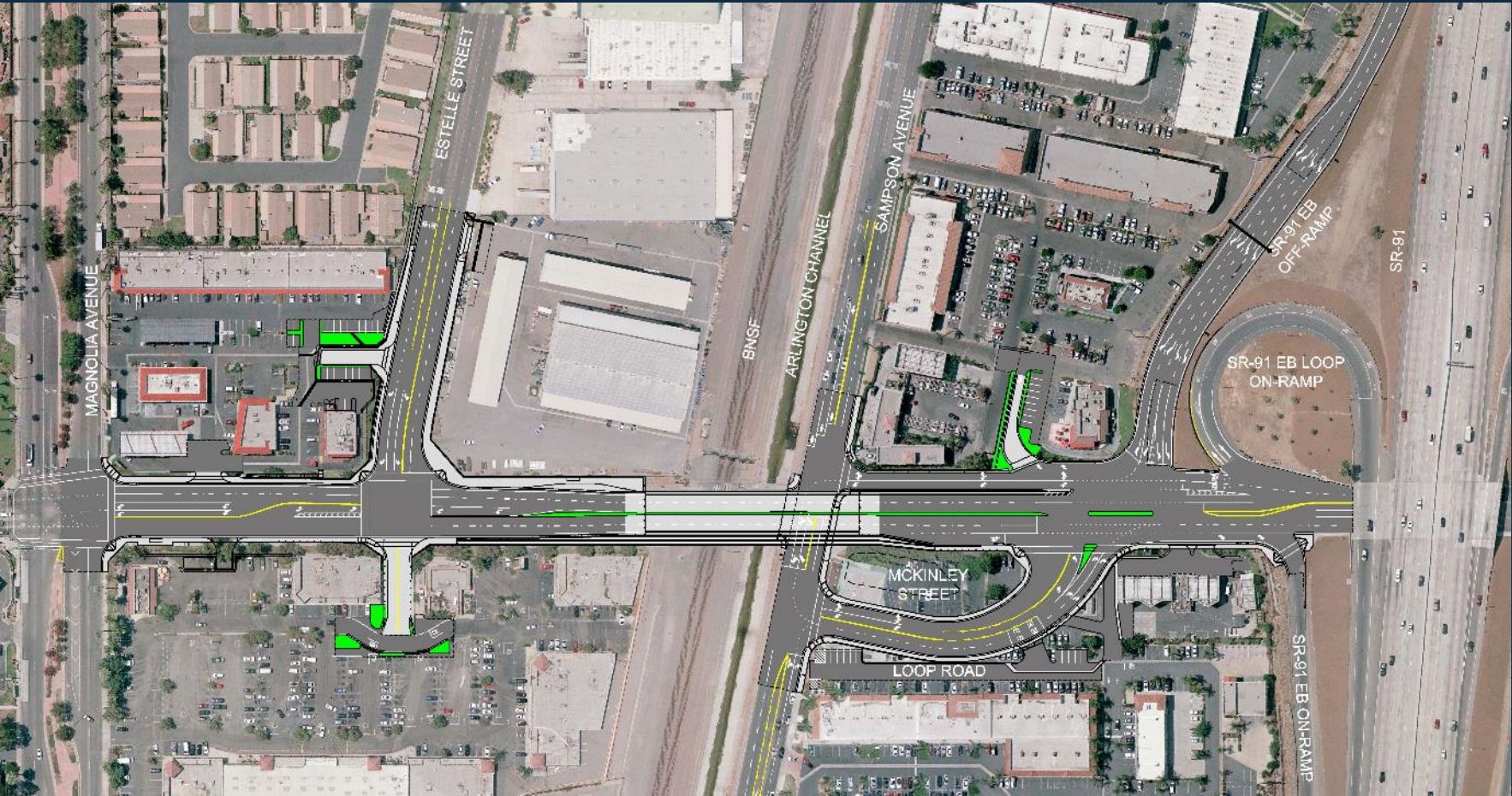


# Presentation Outline

- Project Overview
- Project Updates
- Early Construction Activities
- What to Expect During Construction
  - Recommended Detour Plan
  - Access During Construction
  - Future Public Outreach



# Project Configuration





# Project Layout | Overview (Looking Northwesterly)





# Project Layout | Overview (Looking Northeasterly)





# Project Layout | Overview (Looking Southeasterly)





# Project Layout | Overview (Looking Westerly)





# Project Layout | Overview (Looking Southerly)



# Project Costs & Available Funding

## → Project Costs

- Total Estimated Costs
- Estimated Construction Costs

## → Available Programmed Funds

- Senate Bill 132
- Gas
- Transportation Development Act
- Transportation Uniform Mitigation Fee
- Measure A

## → Additional Funding Sources

- Trade Corridor Enhancement Program (*Secured*)
- California Public Utilities Commission Section 190 Grant (*Secured*)
- Highway-Railroad Crossing Safety Account (*Secured*)





# Contractor/Consultant Procurement

## → Construct Management Consultant

- Advertisement Closed in Jan. 2021
- Interviewed Top Consultants
- Awarded Contract Earlier this Month

## → Demolition Contractor

- Advertisement April, 2021
- Reviewed Bids Last Week
- Award of Contract (Mid May)

## → Construction Contractor

- RFQ Advertisement Closed in March 2021
- Qualified List to Council (Mid May)
- Notice of Inviting Bids (Contract Award Summer of 2021)



# Agency Coordination | Permitting/Approvals

## → Caltrans

- Caltrans Improvement Plan/Permit Approval (Q2, 2021)

## → Riverside County

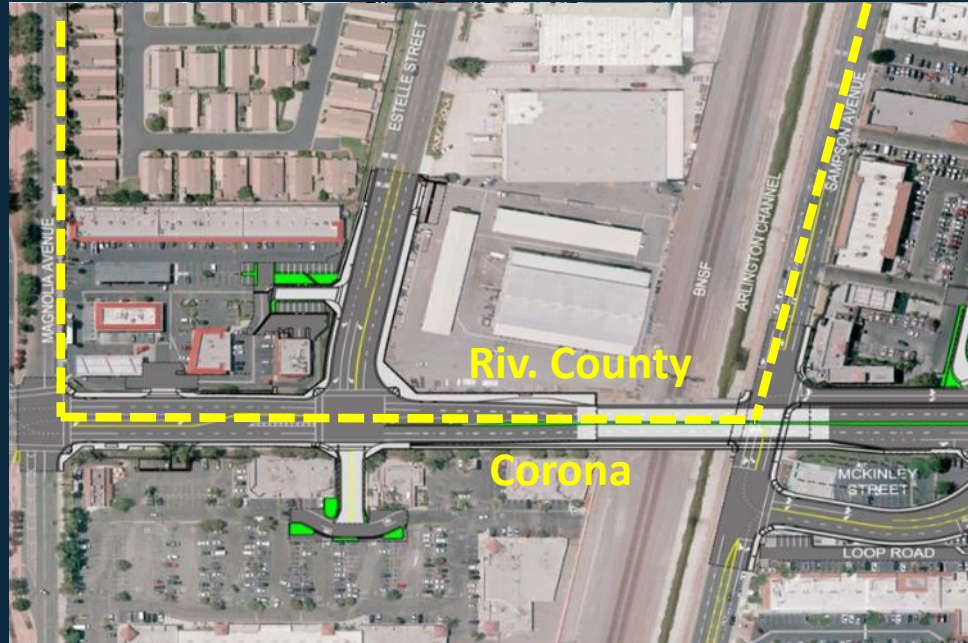
- Improvement Plan/Permit Approval (Complete)

## → RCFC

- Improvement Plan/Permit Approval (Q2, 2021)

## → City of Riverside

- Improvement Plan/Permit Approval (Q2, 2021)



# Agency Coordination | Permitting/Approvals

## → BNSF

- Field Diagnostics (Nov, 2020)
- C&M Agreement (Q2, 2021)
- GO-88B (Q2, 2021)

## → Utilities

- So-Cal Gas
- SCE
- AT&T
- MCI
- Questar
- RPU
- WMWD

Utility	Prelim. Design	Final Relo. Plans	Utility Agmt	Protect in Place
SCGC	Done	Done	N/A	N/A
SCE	Done	Done	N/A	N/A
AT&T	Done	Done	N/A	N/A
MCI	Done	Done	N/A	N/A
Questar	Done	Done	N/A	N/A
RPU	Done	Done	Done	N/A
WMWD	Done	Q2, 2021	May, 2021	N/A

# Early Construction Activities

→ Building Demolition

→ Major Utility Relocations

- AT&T
- Southern California Gas Company
- Southern California Edison
- Riverside Public Utilities

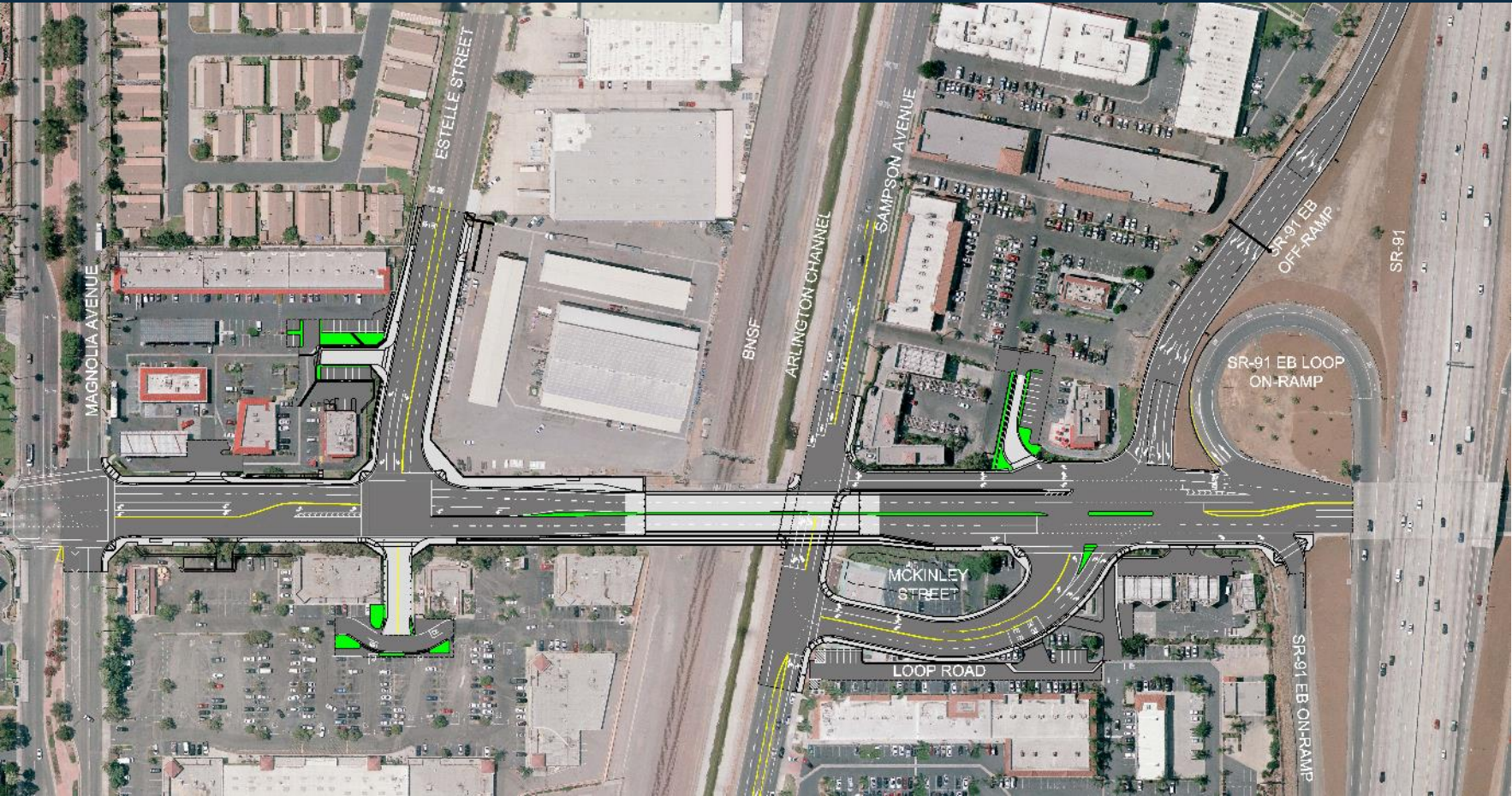
→ Construction

- Bridge Fabrication / Move (Stage 1)
- Major Fill / Roadway / Wall Activities (Stages 2 &3)
- Demobilization/Completion





# Early Construction Activities





# Construction Impacts | Recommended Detour Plan

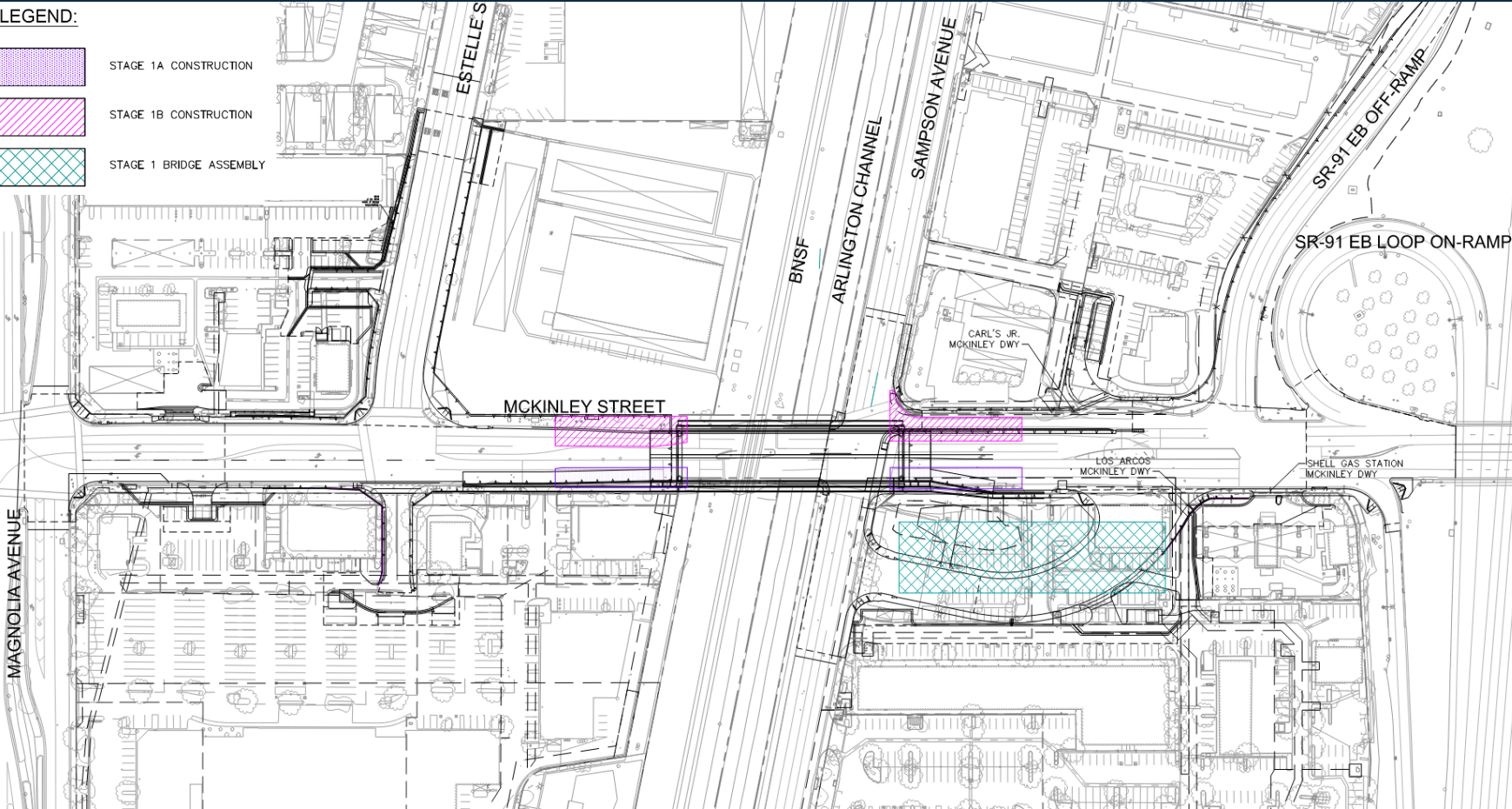




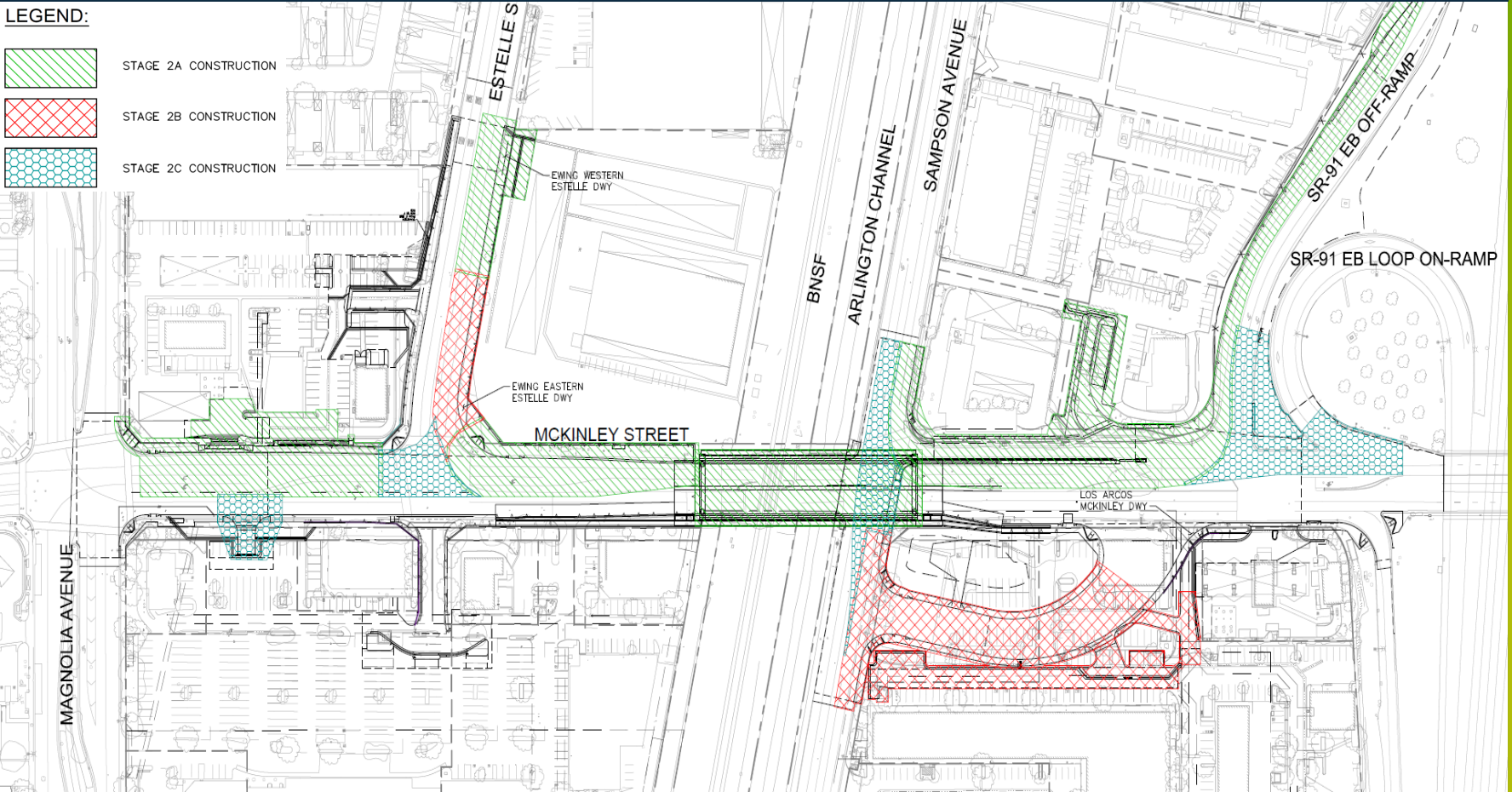
# Construction Impacts | Stage 1

LEGEND:

- STAGE 1A CONSTRUCTION
- STAGE 1B CONSTRUCTION
- STAGE 1 BRIDGE ASSEMBLY




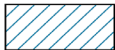
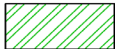
# Construction Impacts | Stage 2

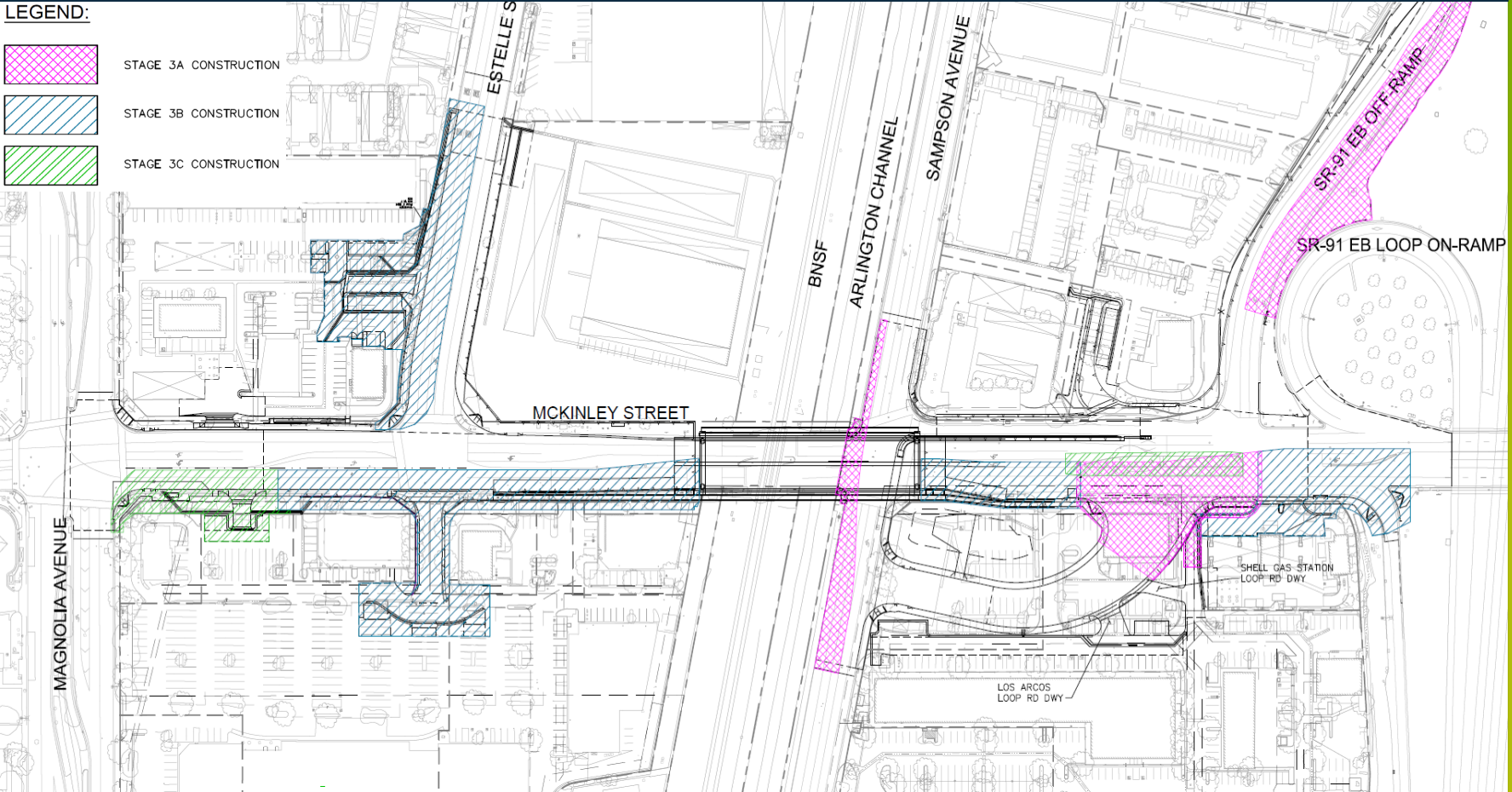




# Construction Impacts | Stage 3

**LEGEND:**

-  STAGE 3A CONSTRUCTION
-  STAGE 3B CONSTRUCTION
-  STAGE 3C CONSTRUCTION



# Public Outreach Plan

- Public Outreach Meetings
- City Council Updates
- Other



# Q&A Session - How to Submit Questions and Comments

## → Zoom Meeting

- **Q&A function:** You may submit all questions and comments using the Zoom “Q&A” function.

*Función de preguntas y respuestas: puede enviar todas las preguntas y comentarios utilizando la función de Q&A (preguntas y respuestas) de Zoom.*

- **Via email:** Submit your questions and comments to [McKinleyGS@arellanoassociates.com](mailto:McKinleyGS@arellanoassociates.com)

*Por correo electrónico: envíe sus preguntas y comentarios a [McKinleyGS@arellanoassociates.com](mailto:McKinleyGS@arellanoassociates.com)*

# Stay Connected

→ **Ways to stay connected with the project or to ask questions:**



McKinleyGS@arellanoassociates.com



(951) 736-2266



[bit.ly/CoronaMcKinleyGS](https://bit.ly/CoronaMcKinleyGS)



[www.CoronaCA.gov](http://www.CoronaCA.gov)

