



# TIER 2 EDIBLE FOOD GENERATORS



THESE ENTITIES ARE REQUIRED TO RECOVER THE MAXIMUM AMOUNT OF EDIBLE FOOD (THAT WOULD OTHERWISE BE DISPOSED OF) STARTING JANUARY 1ST, 2024:

## RESTAURANT:

WITH 250 OR MORE SEATS, OR A TOTAL FACILITY SIZE EQUAL TO OR GREATER THAN 5,000 SQUARE FEET



## A STATE AGENCY WITH A CAFETERIA:

WITH 250 OR MORE SEATS OR A TOTAL CAFETERIA FACILITY SIZE EQUAL TO OR GREATER THAN 5,000 SQUARE FEET

## LARGE EVENT:

AN EVENT, INCLUDING, BUT NOT LIMITED TO, A SPORTING EVENT OR FLEA MARKET, THAT CHARGES AN ADMISSION PRICE, OR IS OPERATED BY A LOCAL AGENCY, AND SERVES AN AVERAGE OF MORE THAN 2,000 INDIVIDUALS PER DAY OF OPERATION OF THE EVENT, AT A LOCATION THAT INCLUDES, BUT IS NOT LIMITED TO, A PUBLIC, NONPROFIT, OR PRIVATELY OWNED PARK, PARKING LOT, GOLD COURSE, STREET SYSTEM, OR OTHER OPEN SPACE WHEN BEING USED FOR AN EVENT



## HOTEL:

WITH AN ON-SITE FOOD FACILITY AND 200 OR MORE ROOMS

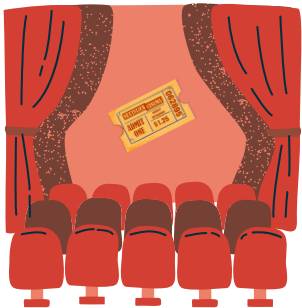
## HEALTH FACILITY WITH AN ON-SITE FOOD FACILITY:

AND 100 OR MORE BEDS



## LARGE VENUE:

A PERMANENT VENUE FACILITY THAT ANNUALLY SEATS OR SERVES AN AVERAGE OF MORE THAN 2,000 INDIVIDUALS WITHIN THE GROUNDS OF THE FACILITY PER DAY OF OPERATION OF THE VENUE FACILITY. A VENUE FACILITY INCLUDES, BUT IS NOT LIMITED TO, A PUBLIC, NONPROFIT, OR PRIVATELY OWNED OR OPERATED STADIUM, AMPHITHEATER, ARENA, HALL, AMUSEMENT PARK, CONFERENCE OR CIVIC CENTER, ZOO, AQUARIUM, AIRPORT, RACETRACK, HORSE TRACK, PERFORMING ARTS CENTER, FAIRGROUND, MUSEUM, THEATER, OR OTHER PUBLIC ATTRACTION FACILITY. A SITE UNDER COMMON OWNERSHIP OR CONTROL THAT INCLUDES MORE THAN ONE LARGE VENUE THAT IS CONTIGUOUS WITH OTHER LARGE VENUES IN THE SITE, IS A SINGLE LARGE VENUE.



## A LOCAL EDUCATION AGENCY WITH AN ON-SITE FOOD FACILITY

