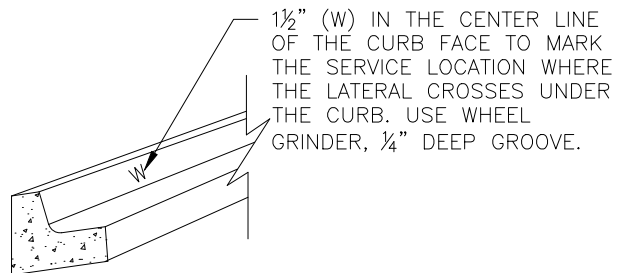
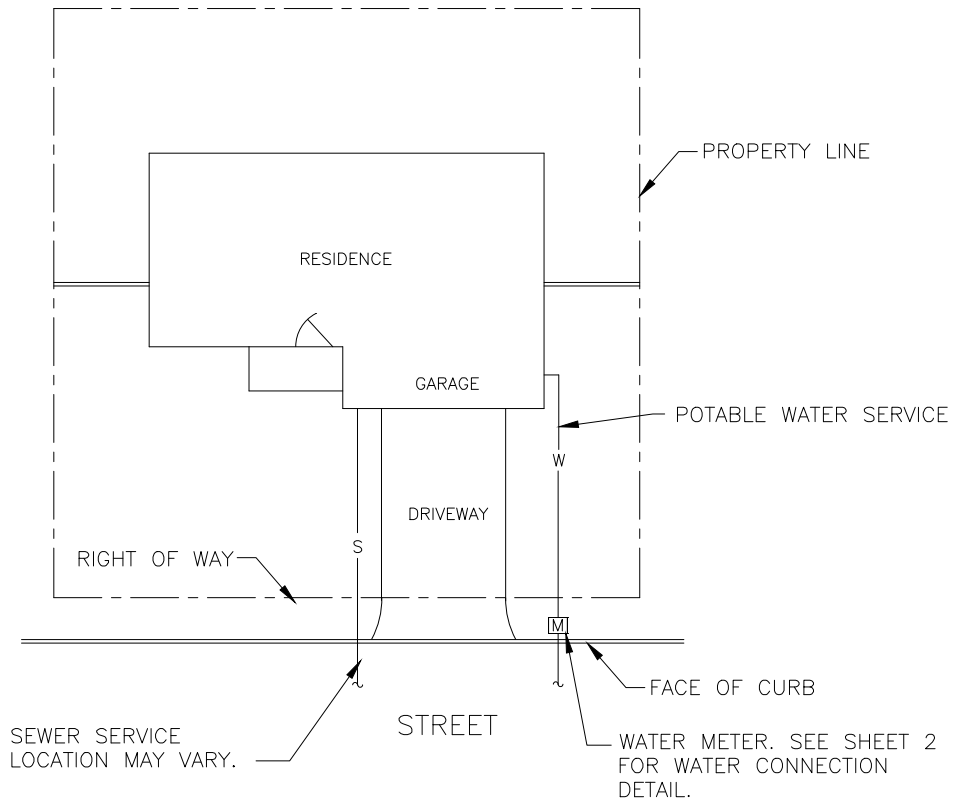


GENERAL NOTES:

1. THE CONTRACTOR IS RESPONSIBLE FOR THE COMPLETE SERVICE CONNECTION AS SHOWN ON THIS STANDARD DRAWING EXCEPT FOR THE WATER METER. THE CITY WILL PROVIDE AND INSTALL THE WATER METER.
2. THE WATER SERVICE SHALL EXTEND PERPENDICULAR TO THE CENTERLINE OF THE STREET FROM THE WATER MAIN TO THE METER STOP.
3. LOCATIONS SHOWN FOR WATER METER BOX AND POTABLE WATER SERVICE ARE DIAGRAMMATIC AND MAY BE REVISED TO SUIT EACH PROPERTY.
4. ALL FITTINGS, PIPE, VALVES, AND FIXTURES SHALL BE LEAD FREE IN COMPLIANCE WITH FEDERAL AND STATE LAWS.



NOT TO SCALE

1-1/2" AND 2" POTABLE WATER SERVICE CONNECTION DETAIL WITHOUT FIRE SPRINKLER SERVICE

REVISION		
NO.	APPROVED	DATE
2		04/30/14
3		05/04/18
4	VRW	12/28/18

APPROVED:

Tom Koper
 TOM G. KOPER, PE,
 CITY ENGINEER

Vernon R. Weisman
 VERNON R. WEISMAN, PE,
 DISTRICT ENGINEER

1/7/2019

DATE

1/7/2019

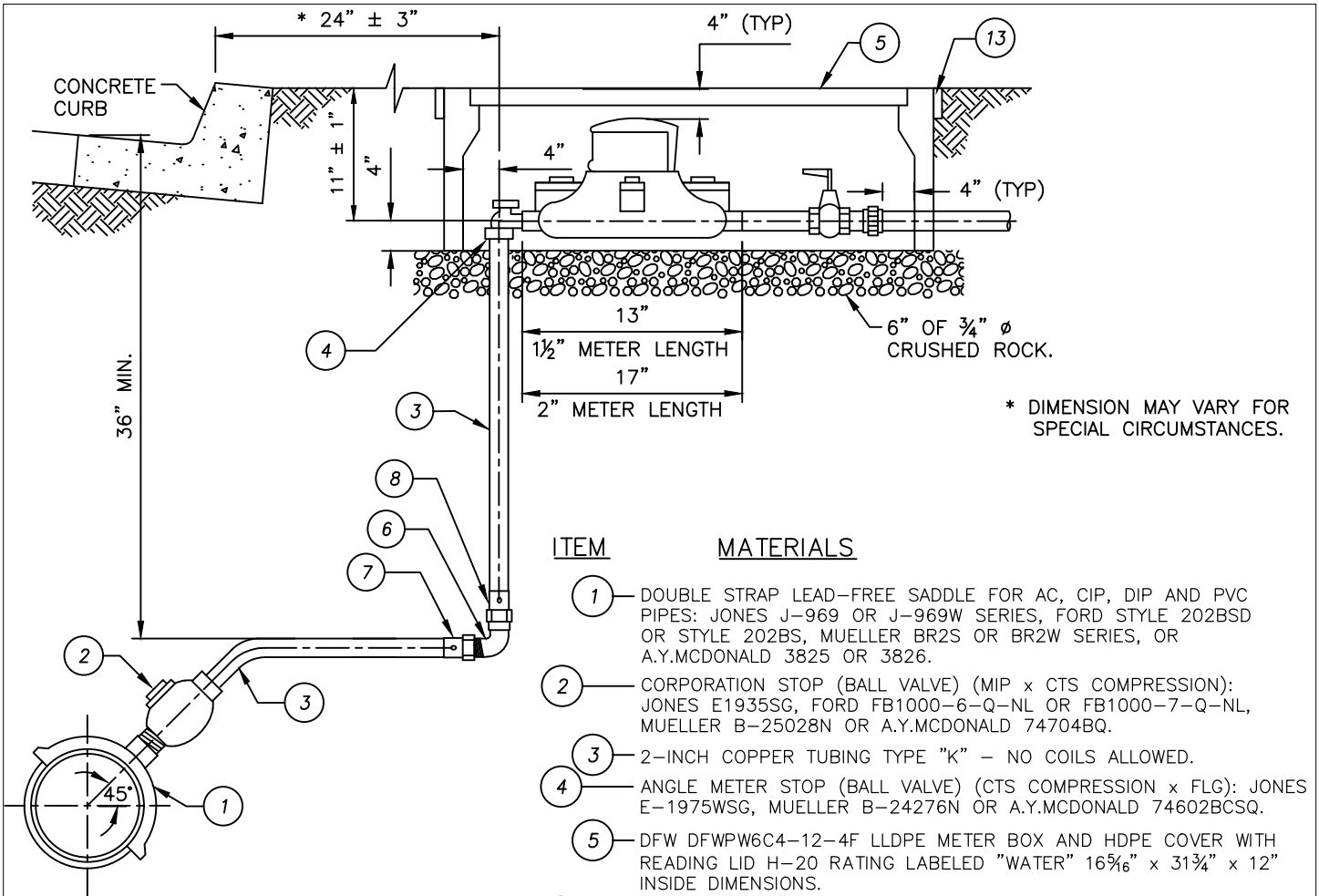
DATE



CITY OF CORONA

STD 415

SHEET 1 OF 3



ITEM MATERIALS


- 1 — DOUBLE STRAP LEAD-FREE SADDLE FOR AC, CIP, DIP AND PVC PIPES: JONES J-969 OR J-969W SERIES, FORD STYLE 202BCD OR STYLE 202BS, MUELLER BR2S OR BR2W SERIES, OR A.Y.MCDONALD 3825 OR 3826.
- 2 — CORPORATION STOP (BALL VALVE) (MIP x CTS COMPRESSION): JONES E1935SG, FORD FB1000-6-Q-NL OR FB1000-7-Q-NL, MUELLER B-25028N OR A.Y.MCDONALD 74704BQ.
- 3 — 2-INCH COPPER TUBING TYPE "K" — NO COILS ALLOWED.
- 4 — ANGLE METER STOP (BALL VALVE) (CTS COMPRESSION x FLG): JONES E-1975WSG, MUELLER B-24276N OR A.Y.MCDONALD 74602BCSQ.
- 5 — DFW DFWPW6C4-12-4F LLDPE METER BOX AND HDPE COVER WITH READING LID H-20 RATING LABELED "WATER" 16 5/8" x 31 3/4" x 12" INSIDE DIMENSIONS.
- 6 — 2-INCH BRASS STREET ELBOW (MIP x FIP).
- 7 — 2-INCH COPPER ADAPTER (CTS COMPRESSION x FIP) MUELLER H15451N OR EQUAL.
- 8 — 2-INCH COPPER ADAPTER (MIP x CTS COMPRESSION).
- 13 — 1/2" THICK FLEXIBLE VINYL (PVC) EXPANSION JOINT WITH A MINIMUM 2" DEPTH. INSTALL EXPANSION JOINT WHEN METER BOX IS CAST IN CONCRETE. DO NOT USE FABRIC OR FELT.

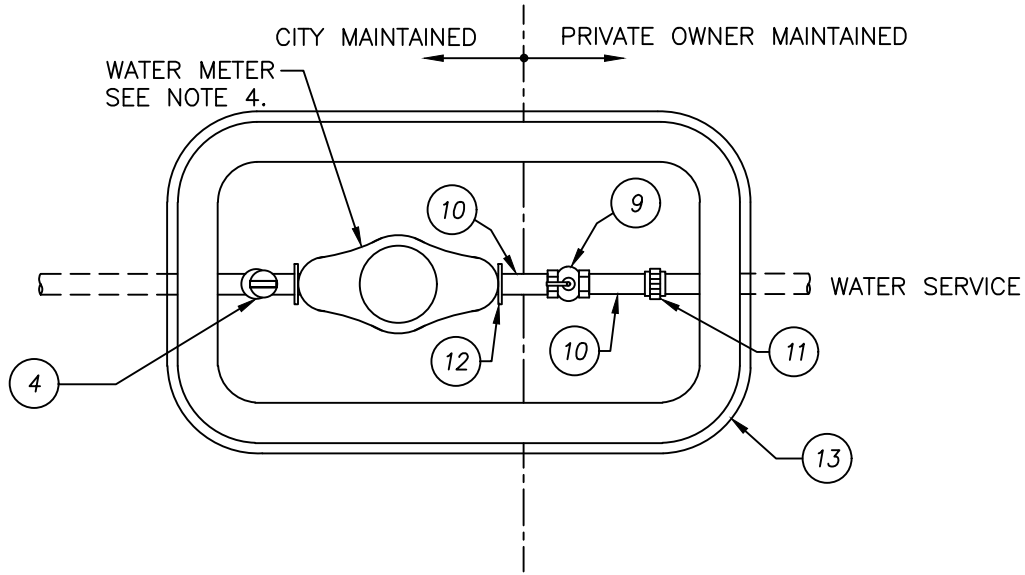
CONSTRUCTION NOTES:

1. SERVICE SADDLE SHALL NOT BE INSTALLED WITHIN 12 INCHES OF VALVE, COUPLING, JOINT, OR FITTING.
2. DOUBLE-WRAP ALL PIPING BELOW GRADE IN A BLUE COLORED 8-MIL POLYETHYLENE SLEEVES LABELED POTABLE WATER. EXTEND POLYETHYLENE SLEEVES 2 INCHES MINIMUM ABOVE FINISH GRADE. SECURE WITH 10-MIL TAPE.
3. CONSTRUCT WATER SERVICE PIPE IN SAND BEDDING (SE 30 MINIMUM) FROM CORP STOP TO METER BOX.
4. ALL CONNECTIONS TO COPPER TUBING SHALL BE COMPRESSION TYPE AND SERVICE MUST BE CONTINUOUS AND UN CUT. NO SWEAT TYPE FITTINGS ALLOWED.
5. CONNECTIONS TO STEEL WATER MAINS SHALL BE WITH A WELDED 3000 POUND HALF COUPLING AND DIELECTRIC INSULATING BUSHING. ALL STEEL SURFACES SHALL BE COVERED WITH CEMENT MORTAR.
6. ROUND AND DE-BURR ALL COPPER PIPE PRIOR TO INSTALLATION.
7. WRAP SERVICE SADDLE WITH TWO LAYERS OF 8-MIL POLYETHYLENE.
8. INSTALL BRASS PIPING AND FITTINGS INSIDE METER BOX BETWEEN ANGLE METER STOP AND BRASS UNIONS.
9. PROVIDE METER BOXES IN UNIMPROVED STREETS AND BEHIND ROLLED CURBS WITH COVERS AND BOXES RATED FOR H-20 TRAFFIC LOADS.

NOT TO SCALE

1-1/2" AND 2" POTABLE WATER SERVICE CONNECTION DETAIL WITHOUT FIRE SPRINKLER SERVICE

REVISION			APPROVED:			CITY OF CORONA
NO.	APPROVED	DATE		10/01/20		
3		05/04/18	<i>Tom Koper</i>	DATE		
4		12/28/18	TOM G. KOPER, PE, CITY ENGINEER			
5	VRW	10/01/20	<i>Vernon R. Weisman</i>	10/01/20		
			VERNON R. WEISMAN, PE, DISTRICT ENGINEER	DATE		
						STD 415
						SHEET 2 OF 3



CONSTRUCTION NOTES:

1. SEE CONSTRUCTION NOTES ON SHEET 2.
2. INSTALL A "LOCK OFF" STYLE BALL VALVE FOR THE DOMESTIC WATER SERVICE.
3. 1½-INCH AND 2-INCH METERS ARE FLANGED.
4. THE CITY WILL PROVIDE AND INSTALL A NEPTUNE T-10 METER. REQUEST THE METER INSTALLATION FROM THE PUBLIC WORKS INSPECTOR OR THE BUILDING INSPECTOR WHEN THERE IS NO PUBLIC IMPROVEMENT PLAN.
5. A REDUCER FITTING CAN BE INSTALLED BETWEEN THE ANGLE METER STOP VALVE AND THE METER, AND PAST THE BRASS UNION WITHIN THE PRIVATE OWNER MAINTAINED AREA.


ITEM

MATERIALS

- ④ — ANGLE METER STOP (BALL VALVE) (CTS COMPRESSION x FLG): JONES E-1975WSG, MUELLER B-24276N OR A.Y.MCDONALD 74602BCSQ.
- ⑨ — METER VALVE (FIP x FIP). USE JONES STYLE E-1900W OR MUELLER B-20200N WITH "LOCK OFF" HANDLE.
- ⑩ — RED BRASS NIPPLE (MIP x MIP), THREADED BOTH ENDS, 2-INCH LENGTH.
- ⑪ — BRASS UNION (FIP x FIP).
- ⑫ — BRASS METER FLANGE (FLG x FIP).
- ⑬ — ½" THICK FLEXIBLE VINYL (PVC) EXPANSION JOINT WITH A MINIMUM 2" DEPTH. INSTALL EXPANSION JOINT WHEN METER BOX IS CAST IN CONCRETE. DO NOT USE FABRIC OR FELT.

NOT TO SCALE

1-1/2" AND 2" POTABLE WATER SERVICE CONNECTION DETAIL WITHOUT FIRE SPRINKLER SERVICE

REVISION			APPROVED:			CITY OF CORONA
NO.	APPROVED	DATE		10/01/20		
3		05/04/18	<i>Tom Koper</i> TOM G. KOPER, PE, CITY ENGINEER	DATE		
4		12/28/18	<i>Vernon R. Weisman</i> VERNON R. WEISMAN, PE, DISTRICT ENGINEER	10/01/20		
5	VRW	10/01/20		DATE		
						STD 415
						SHEET 3 OF 3