

- | ITEM | MATERIALS |
|------|---|
| 1 | MAIN LINE SIZE X 6-INCH OR 4-INCH DI TEE ON NEW WATER MAINS. CUT TEE INTO EXISTING WATER MAIN PER CITY STD. DWG. 421. |
| 2 | RW GATE VALVE FLG X MJ PER CITY STD. DWG 420. |
| 3 | DIP, CLASS 350, RESTRAINED JOINT. |
| 4 | DIP SPOOL FLGxPE (LENGTH AS REQUIRED). |
| 5 | DIP SPOOL, FLG. |
| 6 | 90-DEGREE DI BEND, MJ. |
| 7 | PIPE SUPPORT PER CITY STD. DWG. 418. |
| 8 | RW O.S.&Y GATE VALVE FLG W/ HAND WHEEL, SIZE AS REQUIRED. |
| 9 | VALVE BOX, PER CITY STD. DWG. 422. |
| 10 | COMPOUND FLOW METER, NEPTUNE TRU/FLO. |
| 11 | DIP SPOOL, FLG X VIC. |
| 12 | VICTAULIC COUPLING STYLE 31. |
| 13 | PITOT TUBE INSERTION POINT - TYPE 316SS, 1-INCH DOUBLE-STRAP SADDLE, CLOSE NIPPLE, FULL-PORT BALL VALVE, THREADED PLUG. |
| 14 | MJ RESTRAINT GLAND, EBAA, IRON MEGALUG SERIES 100 (TYP). |
| 15 | DI TEE, FLG (SEE NOTE 8). |
| 16 | DI END CAP. MJ WITH RESTRAINED RETAINER GLAND (WHERE ON-SITE PIPING IS NOT CONNECTED). |
| 17 | AIR/VAC VALVE. SEE STD. DWG. 413. |
| 18 | DI 90-DEGREE BEND FLG. |
| 19 | THRUST BLOCK SIZED PER CITY STD. DWG. 401 (TYP). |
| 20 | TYPE 316SS CAGE WITH EXPANDED METAL PAINTED SAME AS ABOVE-GROUND PIPING. |


DIMENSIONS SIZE (INCHES)	METER AND MAINLINE PIPING			
	3"	4"	6"	8"
A. OVERALL LENGTH	70	82	95	148
B. C-C PIPES	22	24	29	76
C. BYPASS VALVE SIZE	3	3	4	6
D. BYPASS PIPING SIZE	3	3	4	6

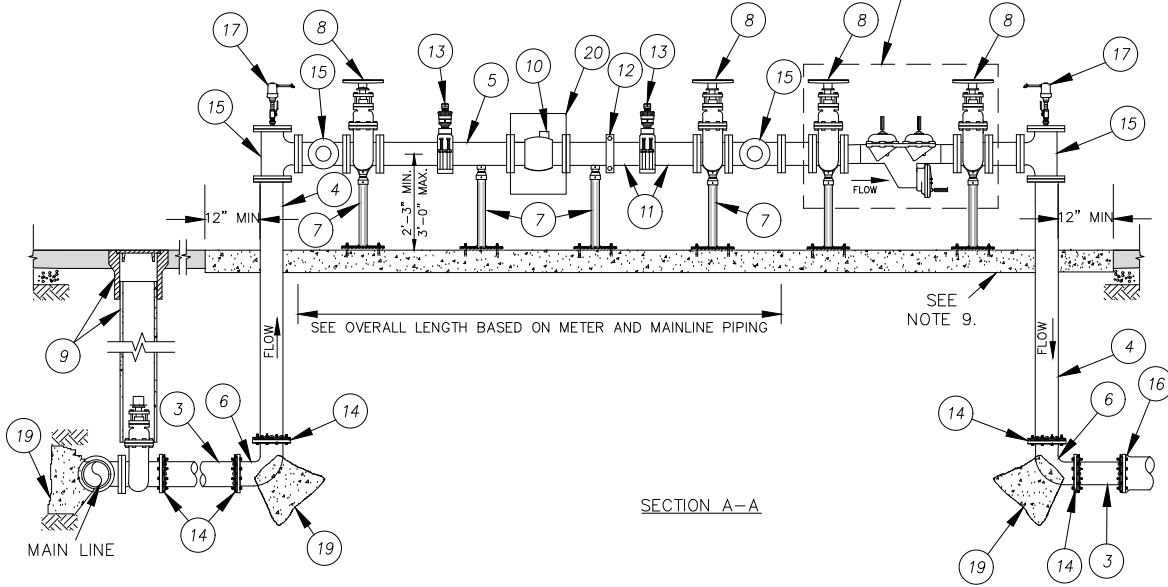
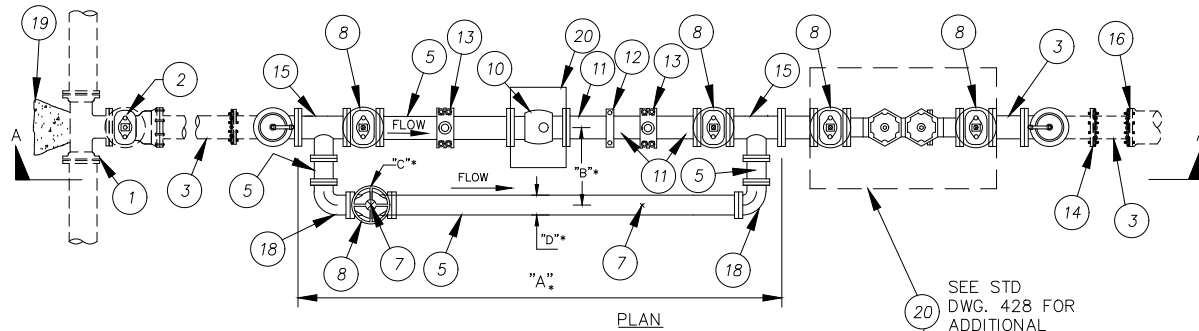
* ALL DIMENSIONS ARE IN INCHES

NOT TO SCALE

CONDITION 1: WITH BYPASS

SEE NOTES ON SHEET 4.

REVISION			APPROVED:		CITY OF CORONA
NO.	APPROVED	DATE	DATE	DATE	
1	VRW	12/28/18	1/7/2019	1/7/2019	 STD 426 SHEET 1 OF 4
			Tom Koper TOM G. KOPER, PE, CITY ENGINEER	Vernon R. Weisman VERNON R. WEISMAN, PE, DISTRICT ENGINEER	




- | ITEM | MATERIALS |
|------|---|
| 1 | MAIN LINE SIZE X 6-INCH OR 4-INCH DI TEE ON NEW WATER MAINS. CUT TEE INTO EXISTING WATER MAIN PER CITY STD. DWG. 421. |
| 2 | RW GATE VALVE FLG X MJ PER CITY STD. DWG 420. |
| 3 | DIP, CLASS 350, RESTRAINED JOINT. |
| 4 | DIP SPOOL FLG X PE (LENGTH AS REQUIRED). |
| 5 | DIP SPOOL, FLG. |
| 6 | 90-DEGREE DI BEND, MJ. |
| 7 | PIPE SUPPORT PER CITY STD. DWG. 418. |
| 8 | RW O.S.&Y GATE VALVE FLG W/ HAND WHEEL, SIZE AS REQUIRED. |
| 9 | VALVE BOX, PER CITY STD. DWG. 422. |
| 10 | COMPOUND FLOW METER, NEPTUNE TRU/FLO. |
| 11 | DIP SPOOL, FLG X VIC. |
| 12 | VICTAULIC COUPLING STYLE 31. |
| 13 | PITOT TUBE INSERTION POINT - TYPE 316SS, 1-INCH DOUBLE-STRAP SADDLE, CLOSE NIPPLE, FULL-PORT BALL VALVE, THREADED PLUG. |
| 14 | MJ RESTRAINT GLAND, EBAA, IRON MEGALUG SERIES 100 (TYP). |
| 15 | DI TEE, FLG (SEE NOTE 8). |
| 16 | DI END CAP. MJ WITH RESTRAINED RETAINER GLAND (WHERE ON-SITE PIPING IS NOT CONNECTED). |
| 17 | AIR/VAC VALVE. SEE STD. DWG. 413. |
| 18 | DI 90-DEGREE BEND FLG. |
| 19 | THRUST BLOCK SIZED PER CITY STD. DWG. 401 (TYP). |
| 20 | TYPE 316SS CAGE WITH EXPANDED METAL PAINTED SAME AS ABOVE-GROUND PIPING. |

DIMENSIONS SIZE (INCHES)	METER AND MAINLINE PIPING			
	3"	4"	6"	8"
A. OVERALL LENGTH	70	82	95	148
B. C-C PIPES	22	24	29	76
C. BYPASS VALVE SIZE	3	3	4	6
D. BYPASS PIPING SIZE	3	3	4	6

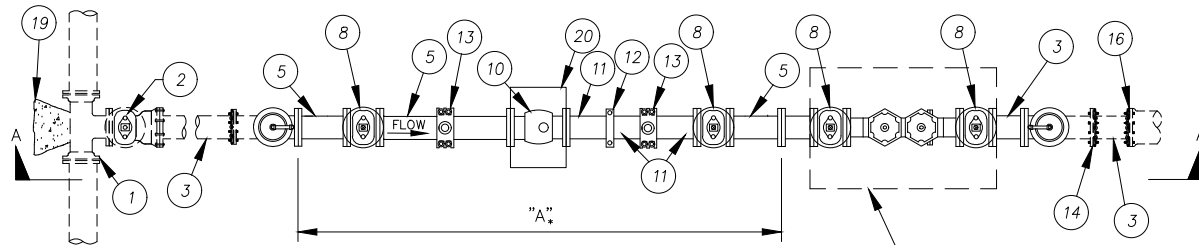
* ALL DIMENSIONS ARE IN INCHES

NOT TO SCALE

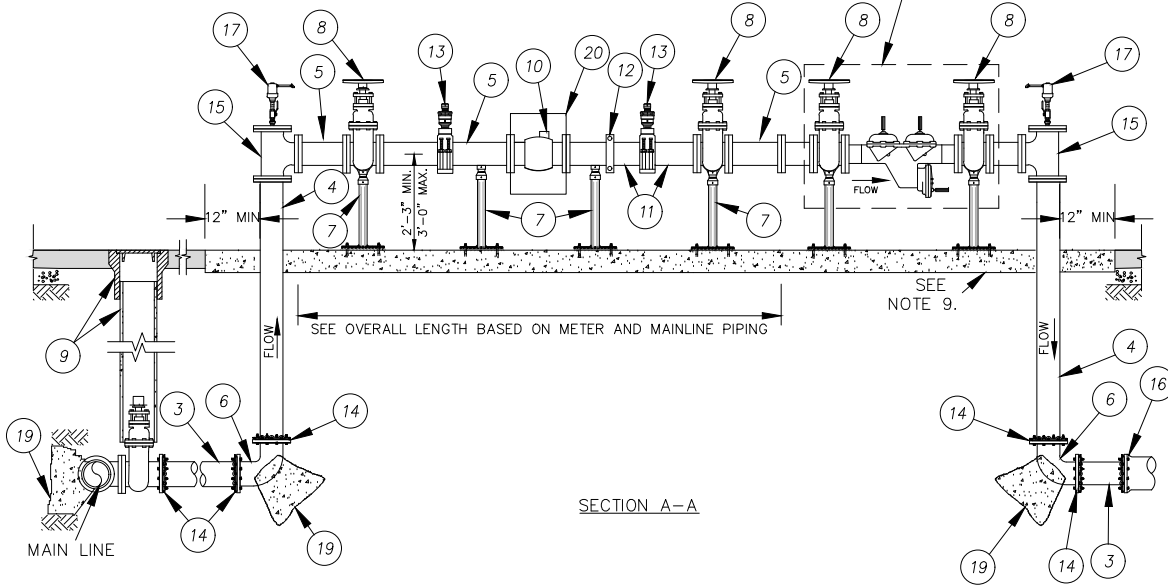
CONDITION 2: WITH BYPASS AND
REDUCED PRESSURE BACKFLOW ASSEMBLY

REVISION			APPROVED:		CITY OF CORONA
NO.	APPROVED	DATE	DATE	DATE	
1	VRW	12/28/18	1/7/2019	1/7/2019	 STD 426 SHEET 2 OF 4
			Tom G. Koper, PE. CITY ENGINEER	Vernon R. Weisman, PE. DISTRICT ENGINEER	

SEE NOTES ON SHEET 4.



PLAN



SECTION A-A

ITEM MATERIALS

- 1 — MAIN LINE SIZE X 6-INCH OR 4-INCH DI TEE ON NEW WATER MAINS. CUT TEE INTO EXISTING WATER MAIN PER CITY STD. DWG. 421.
- 2 — RW GATE VALVE FLG X MJ PER CITY STD. DWG 420.
- 3 — DIP, CLASS 350, RESTRAINED JOINT.
- 4 — DIP SPOOL FLGxPE (LENGTH AS REQUIRED).
- 5 — DIP SPOOL, FLG.
- 6 — 90-DEGREE DI BEND, MJ.
- 7 — PIPE SUPPORT PER CITY STD. DWG. 418.
- 8 — RW O.S.&Y GATE VALVE FLG W/ HAND WHEEL, SIZE AS REQUIRED.
- 9 — VALVE BOX, PER CITY STD. DWG. 422.
- 10 — COMPOUND FLOW METER, NEPTUNE TRU/FLO.
- 11 — DIP SPOOL, FLG X VIC.
- 12 — VICTAULIC COUPLING STYLE 31.
- 13 — PITOT TUBE INSERTION POINT - TYPE 316SS, 1-INCH DOUBLE-STRAP SADDLE, CLOSE NIPPLE, FULL-PORT BALL VALVE, THREADED PLUG.
- 14 — MJ RESTRAINT GLAND, EBAA, IRON MEGALUG SERIES 100 (TYP).
- 15 — DI TEE, FLG (SEE NOTE 8).
- 16 — DI END CAP. MJ WITH RESTRAINED RETAINER GLAND (WHERE ON-SITE PIPING IS NOT CONNECTED).
- 17 — AIR/VAC VALVE. SEE STD. DWG. 413.
- 19 — THRUST BLOCK SIZED PER CITY STD. DWG. 401 (TYP).
- 20 — TYPE 316SS CAGE WITH EXPANDED METAL PAINTED SAME AS ABOVE-GROUND PIPING.


DIMENSIONS	METER AND MAINLINE PIPING			
SIZE (INCHES)	3"	4"	6"	8"
A. OVERALL LENGTH*	70	82	95	148

* ALL DIMENSIONS ARE IN INCHES

NOT TO SCALE


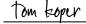
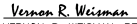
CONDITION 3: WITHOUT BYPASS AND WITH REDUCED PRESSURE BACKFLOW ASSEMBLY

SEE NOTES ON SHEET 4.

REVISION			APPROVED:		CITY OF CORONA
NO.	APPROVED	DATE	DATE	DATE	
			1/7/2019	1/7/2019	 STD 426 SHEET 3 OF 4
			Tom Eger TOM G. KOPER, PE, CITY ENGINEER	Vernon R. Weisman VERNON R. WEISMAN, PE, DISTRICT ENGINEER	

NOTES:

1. EASEMENT NOTE: METER INSTALLATION IMPROVEMENTS OUTSIDE THE CITY/COUNTY RIGHT-OF-WAY REQUIRE A DEDICATED EASEMENT IN A FORM REQUIRED BY THE CITY.
2. RETAINING WALL (UP TO 6 FEET) : WHEN RETAINING WALL IS REQUIRED TO ACCOMMODATE GRADE VARIATIONS THE WALL SHALL BE CONSTRUCTED PER SSPWC STD. PLAN 618-3 AND PROVIDE MINIMUM 3 FEET CLEARANCE FROM THE IMPROVEMENTS. RETAINING WALLS TALLER THAN 6 FEET REQUIRE A CUSTOM DESIGN PREPARED BY CALIFORNIA REGISTERED CIVIL OR STRUCTURAL ENGINEER.
3. METER SHALL READ IN CUBIC FEET.
4. SEE APPROVED LIST OF MATERIALS FOR RESILIENT WEDGE GATE VALVE MANUFACTURER'S.
5. ELBOWS, TEES, AND REDUCERS SHALL BE A MINIMUM OF FIVE (5) PIPE DIAMETERS UPSTREAM OF FLOW METERS AND THREE (3) PIPE DIAMETERS DOWNSTREAM OF METER.
6. CHECK VALVES OR PRESSURE REDUCING DEVICES SHALL NOT BE INSTALLED LESS THAN TEN (10) PIPE DIAMETERS UPSTREAM OF METER AND FIVE (5) PIPE DIAMETERS DOWNSTREAM OF METER.
7. CITY SHALL ORDER METER. DEVELOPER SHALL PICKUP METER FROM CITY WAREHOUSE AND REIMBURSE THE CITY FOR COST OF METER.
8. INSTALL REDUCING TEES WHERE REQUIRED TO REDUCE PIPE SIZE FROM 8-INCH TO 6-INCH, 6-INCH TO 4-INCH, OR 4-INCH TO 3-INCH, SEE MATERIALS LIST ITEM 15.
9. CONSTRUCT 8-INCH THICK 560-C-3250 REINFORCED CONCRETE HOUSEKEEPING PAD MINIMUM 12-INCHES OUTSIDE OF PIPING AND APPURTENANCES IN ALL DIRECTIONS.
10. THE PIPING BETWEEN THE MAIN AND THE ASSEMBLY (BOTH UPSTREAM AND DOWNSTREAM) SHALL BE RESTRAINED (ALL JOINTS AND FITTINGS).
11. EPOXY LINE AND COAT ABOVE GROUND DI PIPE AND FITTINGS, VALVES, AND COUPLINGS.
12. PAINT ABOVE GROUND PIPE AND FITTINGS, VALVES AND COUPLINGS HUNTER GREEN.
13. ALL FITTINGS, PIPE, VALVES, AND FIXTURES SHALL BE LEAD FREE IN COMPLIANCE WITH FEDERAL AND STATE LAWS.

REVISION			APPROVED:			CITY OF CORONA
NO.	APPROVED	DATE		DATE		
			 TOM C. KOPER, PE. CITY ENGINEER	1/7/2019		STD 426
			 VERNON R. WEISMAN, PE. DISTRICT ENGINEER	1/7/2019		
						SHEET 4 OF 4