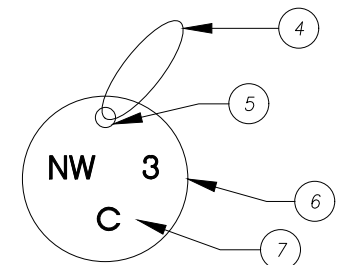
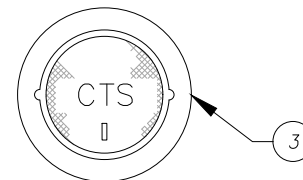


UNIMPROVED AREAS – INSTALL 2" PIPE MARKER POST PAINTED "SAFETY YELLOW" (DOMESTIC WATERLINE) OR "PURPLE" (RECLAIMED WATER). LABEL C.T.S. WITH DISTANCE & DIRECTION TO VALVE CAN. SEE GENERAL NOTE 5. PAD SHALL BE 24" x 24" AND 9" THICK.




ITEM MATERIALS

- 1 — 6 INCHES OF 3/4-INCH CRUSHED ROCK BEDDING. BRING ADDITIONAL 2 INCHES OF BEDDING INTO BOX.
- 2 — NO. 8 AWG HMWPE COPPER WIRE WITH BLACK INSULATION. COIL BOTH ENDS PER NOTE 2.
- 3 — BROOKS 3-RT TRAFFIC VALVE BOX, USE 6-INCH LONG-SKIRTED CAST IRON LID. PAINT BLUE FOR POTABLE WATER OR PAINT PANTONE PURPLE FOR RECLAIMED WATER.
- 4 — NYLON WIRE.
- 5 — 3/16-INCH DIA. HOLE.
- 6 — 2-INCH DIA. BRASS TAG WITH STAMPED IDENTIFYING LETTERS AND NUMBERS. DETAIL HEREON. SEE SHEET 2 FOR STATION IDENTIFICATION TAG AND WIRE IDENTIFICATION TAG LABELING STANDARDS.
- 7 — 1/4-INCH HIGH LETTERS AND NUMBERS.
- 8 — 560-C-2150 CONCRETE.

NOTES:

1. INSTALLATION TYPICAL FOR TWO WIRE, FOUR WIRE, INSULATING JOINT AND CASING TEST STATIONS. SEE SHEET 2 FOR LABELING STANDARDS.
2. PROVIDE 3 FEET OF COILED SLACK IN EACH WIRE AT EACH END (I.E. AT PIPE AND INSIDE THE TEST STATION BOX).
3. STRIP INSULATION FROM END OF EACH TEST LEAD. MIN. 1/4-INCH, MAX. 1/2-INCH. INSTALL WIRE NUTS AND ANTI-ARC COMPOUND TO PROTECT BARE WIRE ENDS.

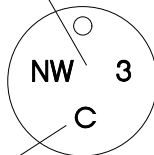
NOT TO SCALE

REVISION			APPROVED:		CITY OF CORONA
NO.	APPROVED	DATE		DATE	
1		09/04/13	<i>Nelson D. Nelson</i>	7/30/2018	 CITY OF CORONA STD 454 SHEET 1 OF 2
2	VRW	07/30/18	<i>Vernon R. Weisman</i>	7/30/2018	
			NELSON D. NELSON, PE PUBLIC WORKS DIRECTOR	DATE	
			VERNON R. WEISMAN, PE DISTRICT ENGINEER	DATE	

WIRE NUMBER AND DIRECTION

NW = COMPASS DIRECTION THAT WIRE RUNS ON PIPE. ONE OF THE EIGHT PRIMARY DIRECTIONALS; N, E, S, W, NW, NE, SW, SE. USE ALPHA CHARACTER "X" FOR CPTS CONNECTIONS RIGHT AT OR NEAREST TO THE CPTS BOX.

3 = SEQUENTIAL, 1 DIGIT NUMBER ASSIGNED TO EACH TEST STATION WIRE; UNIQUE TO EACH TEST WIRE. LOWEST NUMBERS (1 & 2) ARE TO BE CLOSEST TO THE JOINT OR TEST BOX SITE.



FACILITY IDENTIFIER

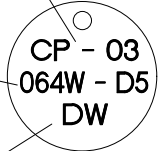
- P** = PIPELINE
- C** = CASING
- A** = ANODE
- RC** = REFERENCE COUPON
- IJ** = INSULATING JOINT

STATION NUMBER = CP - _ _

CP = CATHODIC PROTECTION TEST STATION

3 = SEQUENTIAL, 2 DIGIT NUMBER ASSIGNED TO EACH TEST STATION; UNIQUE TO THE ATLAS PAGE. (I.E. START NUMBERING OVER AT 01 ON EACH ATLAS PAGE)

ATLAS PAGE AND QUADRANT CO-ORDINATES




SYSTEM TYPE

- DW** = DOMESTIC
- RW** = RECLAIM
- UT** = UNTREATED
- FM** = FORCE MAIN
- S** = SEWER

WIRE IDENTIFICATION LABELING STANDARDS

STATION IDENTIFICATION LABELING STANDARDS

NOT TO SCALE

REVISION			APPROVED:		CITY OF CORONA
NO.	APPROVED	DATE		DATE	
1		09/04/13	<i>Nelson D. Nelson</i>	7/30/2018	 STD 454
2	VRW	07/30/18	<i>Vernon R. Weisman</i>	7/30/2018	
			NELSON D. NELSON, PE, PUBLIC WORKS DIRECTOR		SHEET 2 OF 2
			VERNON R. WEISMAN, PE, DISTRICT ENGINEER		