



Corona Fire Department

Address and Premises Identification Standard per 2022 California Fire Code

PURPOSE

The intent of this standard is to provide the minimum requirements necessary for the proper posting of building addresses and suite identifications. Building addresses enable emergency responders to locate homes, businesses, and property. Visible addresses are required by the 2022 California Fire Code, Section 505 and as amended by the Corona Municipal Code Section 505.1.

SCOPE

Approved suite numbers or addresses shall be provided for all new and existing buildings in such a position as to be plainly visible and legible from the street or road fronting the property. Addresses shall comply with Corona Municipal Code and this standard unless an alternate means or method is approved by the Fire Marshal.

REQUIREMENTS

1. A specific address assigned by the City of Corona, Planning and Development Department shall be provided for each building. Suite numbers are assigned by the Fire Department and shall meet the requirements of this standard. Generally, if multiple structures are on the same parcel one main address will be assigned with suite identification.
2. The numbers shall be displayed in a location plainly visible and legible from the street or access drive fronting the property. Said numbers shall contrast in color with their background.
3. All suite/unit identification numbers shall increase from lowest (101) to highest, in the same manner or direction as the street numbers. Suite identification assignments shall be approved prior to certificate of occupancy or final inspection.
4. Prior to installation of addresses, signs or monuments, the Corona Fire Department shall be contacted for location approval.
5. The minimum sizes of the numerals shall be as specified by the following:
 - A. **One-and two-family dwellings including habitable auxiliary dwelling units**
 - Four (4") inches in height, minimum, 0.5" minimum stroke width
 - Illuminated during all hours of darkness
 - An additional sign, pole or monument may be required at the street when dwelling is set back from the street and visibility is poor.
 - B. **Multi-Family Dwelling (3 units or more)**
 - Twelve (12") inches in height, minimum, 0.5" minimum stroke width - on the building
 - Six (6") inches in height, minimum, 0.5" minimum stroke width – unit numbers visible from walks and drives
 - Three (3") inches in height, minimum, 0.5" minimum stroke width – interior hallways and doors
 - Illuminated during all hours of darkness
 - C. **Industrial/Commercial/Office**
 - Twelve (12") inches in height, minimum, 0.5" minimum stroke width - on the building
 - Six (6") inches in height, minimum, 0.5" minimum stroke width – suites front and rear doors
 - Three (3") inches in height, minimum, 0.5" minimum stroke width – interior hallways and doors
 - Illuminated during all hours of darkness



Corona Fire Department

Address and Premises Identification Standard per 2022 California Fire Code

D. Rooftop addresses (commercial/industrial only)

Rooftop numbers shall be installed on all new commercial/industrial buildings and may be required on existing commercial/industrial buildings undergoing tenant improvements, as determined by the Fire Marshal. Rooftop address numerals shall be three (3) feet in height; the overall width of individual numerals shall be two (2) feet with a 6" stroke and shall be painted with black lettering on a white painted background. Arial or similar acceptable font shall be used. The space between numerals shall be two (2) feet. Numbers shall be placed parallel to the street (facing the street as if the address were visible from the street at ground level. See illustration on page 5. Any proposed alternate contrasting combinations shall be approved by the Fire Prevention Division.

6. Vegetation or other site features shall not obstruct addresses numerals.
7. Multiple buildings may require illuminated directories at the site entries.
8. Any deviations from these standards will require written approval from the Fire Marshal.

ILLUMINATED DURING ALL HOURS OF DARKNESS SHALL MEAN:

The street address assigned to the building shall be displayed in a manner approved by the Corona Fire Department and shall be illuminated by one of the following methods:

- A. An approved, listed, electric exterior light of adequate power and fixed in such a position that the required address is fully lit and can easily be read from the street or access drive that is fronting the property, during all hours of darkness. Said light shall not be controlled by a switch, but may be equipped with a light-sensitive device that will turn the light off during daylight hours. Any device employed to turn the light on and off shall be fully automatic and function without routine human intervention, or
- B. An approved, listed address display fixture that is backlit from within the fixture and can be easily read from the street or access drive that is fronting the property during all hours of darkness. Said fixture shall not be controlled by a switch but may be equipped with a light sensitive device that will turn the fixture off during daylight hours. Any device employed to turn the fixture on and off shall be fully automatic and function without routine human intervention.

A list of illuminated address distributors and retail outlets follows. All distributors listed sell to contractors. Not all sell to retail purchasers. Call first to inquire. List current as of March 2023.

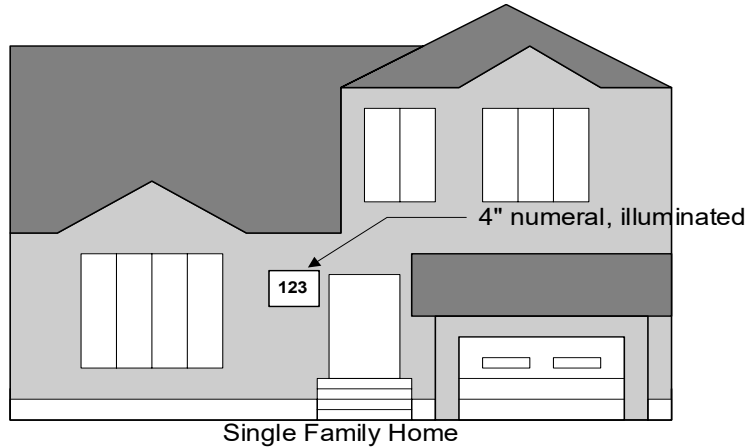
Berk's Electrical and Lighting 327 S Tustin Av Orange, CA 92866 www.berkseletrical.com (949) 857-8385	Victors Lighting 1608 W. Chapman Ave Orange, CA 92868 www.victorslighting.net (714) 978-3945
Lightstyles 658 N Tustin Ave Orange, CA 92667 www.lightbulbsetc.com (714) 532-1410	All Around Lighting 10005 Muirlands Blvd Irvine, CA 92618 www.allaroundlighting.com (949) 458-5999
McNally Electric and Lighting 10792 Los Alamitos Blvd Los Alamitos, CA 90720 www.mcnallylighting.com (562) 598-9438	Walters Wholesale Electric Co. 1880 Spruce St. Riverside, CA 92507 www.walterswholesale.com (951) 680-0210
Lamps Plus 10357 Magnolia Av Riverside, CA 92505 www.lampsplus.com (951) 351-8293	Inland Lighting Supplies Inc. 3393 Durahart Riverside, CA 92507 www.inlandlightingsupplies.com (800) 697-3455



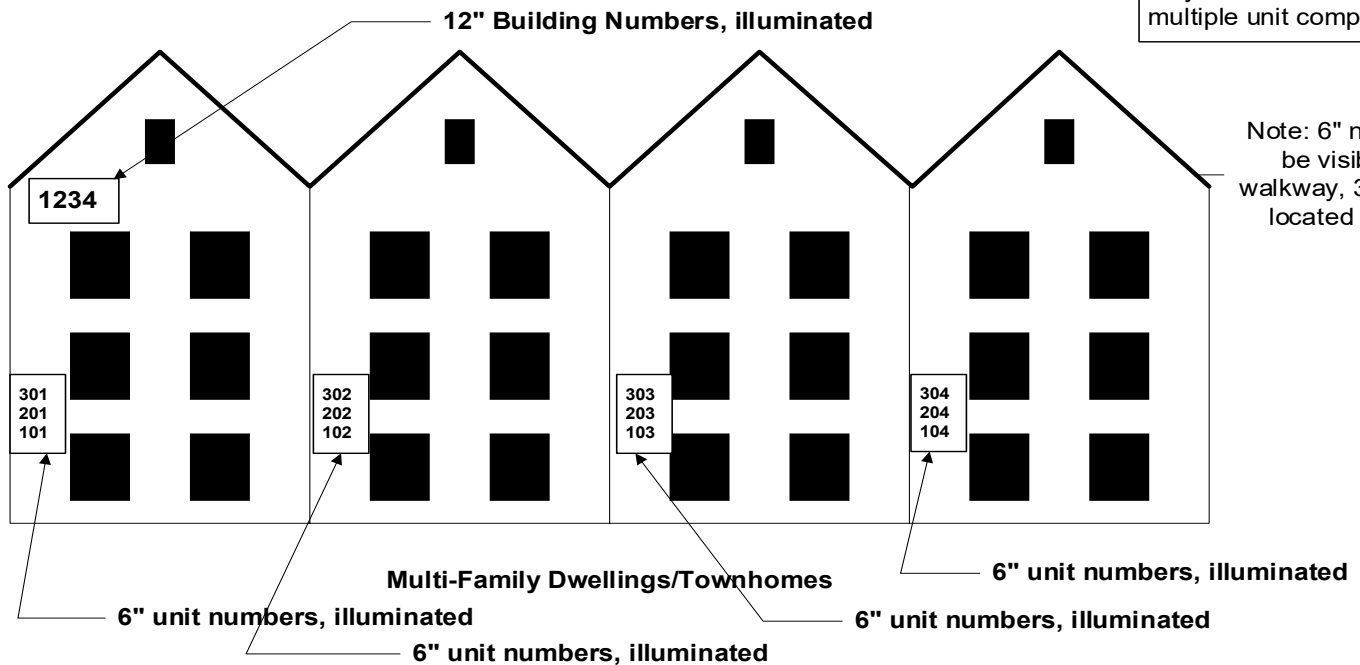
Corona Fire Department

Address and Premises Identification Standard per 2022 California Fire Code

It is recommended that the builder or owner meet with the Fire Prevention Bureau prior to posting numbers or having any stationery, forms, business cards, etc., printed.



Monument signs or posts may be needed at entrances to long driveways, or directories may be needed to multiple unit complexes.



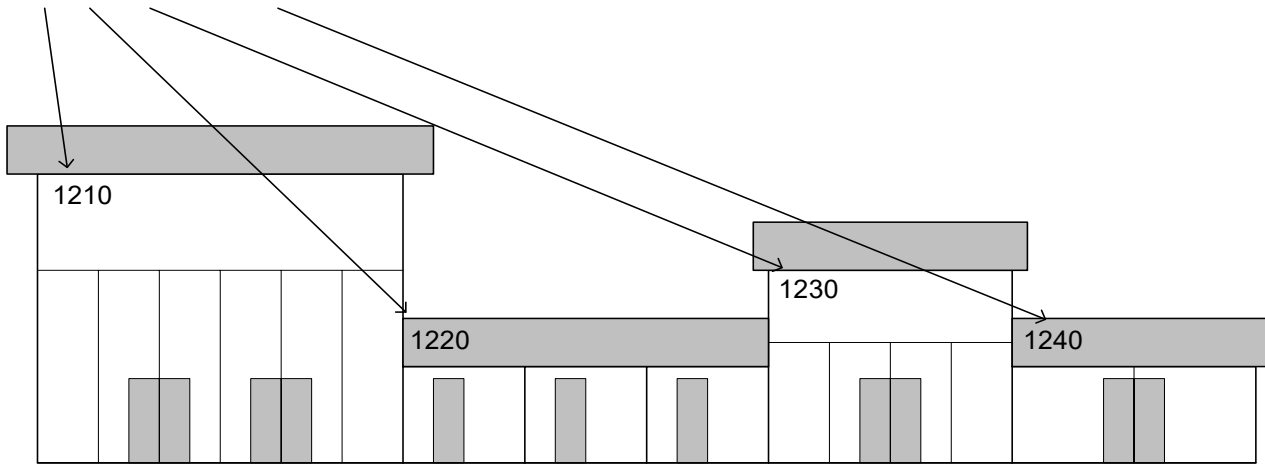
Note: 6" numerals to be visible from walkway, 3" numerals located on doors



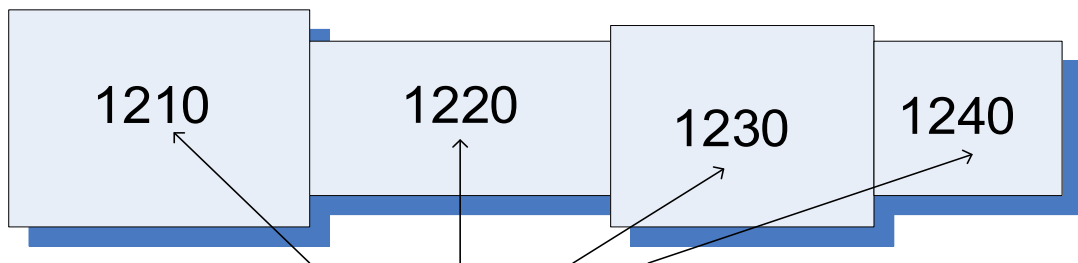
Corona Fire Department

Address and Premises Identification Standard per 2022 California Fire Code

12" Building Numbers



Commercial/Industrial Addresses



ROOFTOP ADDRESSES

3' x 2' BLACK NUMERALS ON WHITE BACKGROUND
UNLESS OTHERWISE APPROVED
ARIAL OR SIMILAR FONT

COMMERCIAL/INDUSTRIAL ROOFTOP ADDRESS MARKING

*not to scale

