

CITY OF CORONA

Annual Report



FISCAL YEAR 2024

COMMUNITY FACILITIES DISTRICT NO. 2000-1

(DEBRIS BASIN)



SPICER CONSULTING
GROUP

Table of Contents

Sections

1	District Profile	1
2	Special Tax Information	1
3	Payment History	2

Tables

2-1	Assigned Special Tax Rates	1
2-2	Special Tax Breakdown	1
3-1	Delinquency Summary	2

Appendix

Appendix A – Boundary Map



Community Facilities District No. 2000-1 (Debris Basin)

1. District Profile

Project Description

Community Facilities District No. 2000-1 Debris Basin (the “CFD No. 2000-1 Debris Basin” or the “District”) was formed to finance the annual operations and maintenance of the debris basin, administrative expenses and a replacement fund.

Location

CFD No. 2000-1 Debris Basin is comprised of approximately 165 gross acres located in the southeastern part of the City of Corona (the “City”), in the Bedford Canyon area, and westerly of the Route 15/Cajalco Road freeway interchange.

Bond Profile and Principal Amount of Bonds Outstanding

CFD No. 2000-1 Debris Basin is a non-bonded district.

2. Special Tax Information

Special Tax

The amount collected each year is determined by the Special Tax formula and can vary from year to year but shall not exceed the maximum authorized (or permitted) Special Tax rates. The amount levied for Fiscal Year 2024 tax year is \$21,991.40. The Assigned Special Tax rates for Fiscal Year 2024 are as follows:

On July 1, commencing on July 1, 2002 the Assigned Special Tax Rates for Operation and Maintenance for all Parcels of Developed Property, as specified in Table 2-1, shall increase by an amount equal to four percent (4.00%) of the amounts of the Special Tax for the preceding Fiscal Year.

*Table 2-1
Assigned Special Tax Rates*

Category	Taxable Unit	Assigned Special Tax
Zone A Residential	Residential Unit	\$189.59
Zone B Residential	Residential Unit	\$161.15
Zone C Commercial	Acre	\$630.40
Zone A Non-Conforming	Residential Unit	\$204.54
Zone B Non-Conforming	Residential Unit	\$306.21

*Table 2-2
Special Tax Breakdown*

Category	Parcels	EDU	Levied Amount	Assigned Special Tax	% of Assigned Special Tax
Zone A Residential	24	24.00	\$1,599.36	\$4,550.24	35.15%
Zone B Residential	273	273.00	\$15,462.72	\$43,995.17	35.15%
Zone C Commercial	4	3.27	\$724.54	\$2,061.40	35.15%
Zone A Non-Conforming	57	17.04	\$4,097.16	\$11,658.99	35.15%
Zone B Non-Conforming	1	0.35	\$107.62	\$306.21	35.15%
Total	359	317.66	\$21,991.40	\$62,572.02	35.15%

Termination of Special Tax

For each Fiscal Year the City of Corona provides services the Special Tax shall be levied on all Assessor's Parcels subject to the Special Tax as necessary to satisfy the Special Tax Requirement. The Special Tax shall be in perpetuity as long as the City provides the services to CFD No. 2000-1 Debris Basin.

3. Payment History

Delinquencies are calculated through June 2023 and may reflect parcels that may already be on a payment plan.

Delinquency Rate for Fiscal Year 2023

As of June 2023, the delinquency rate of CFD No. 2000-1 Debris Basin for Fiscal Year 2023 is 0.52%.

Information Concerning Delinquent Parcels

CFD No. 2000-1 Debris Basin delinquency information as of June 2023 is illustrated below:

Table 3-1
Delinquency Summary

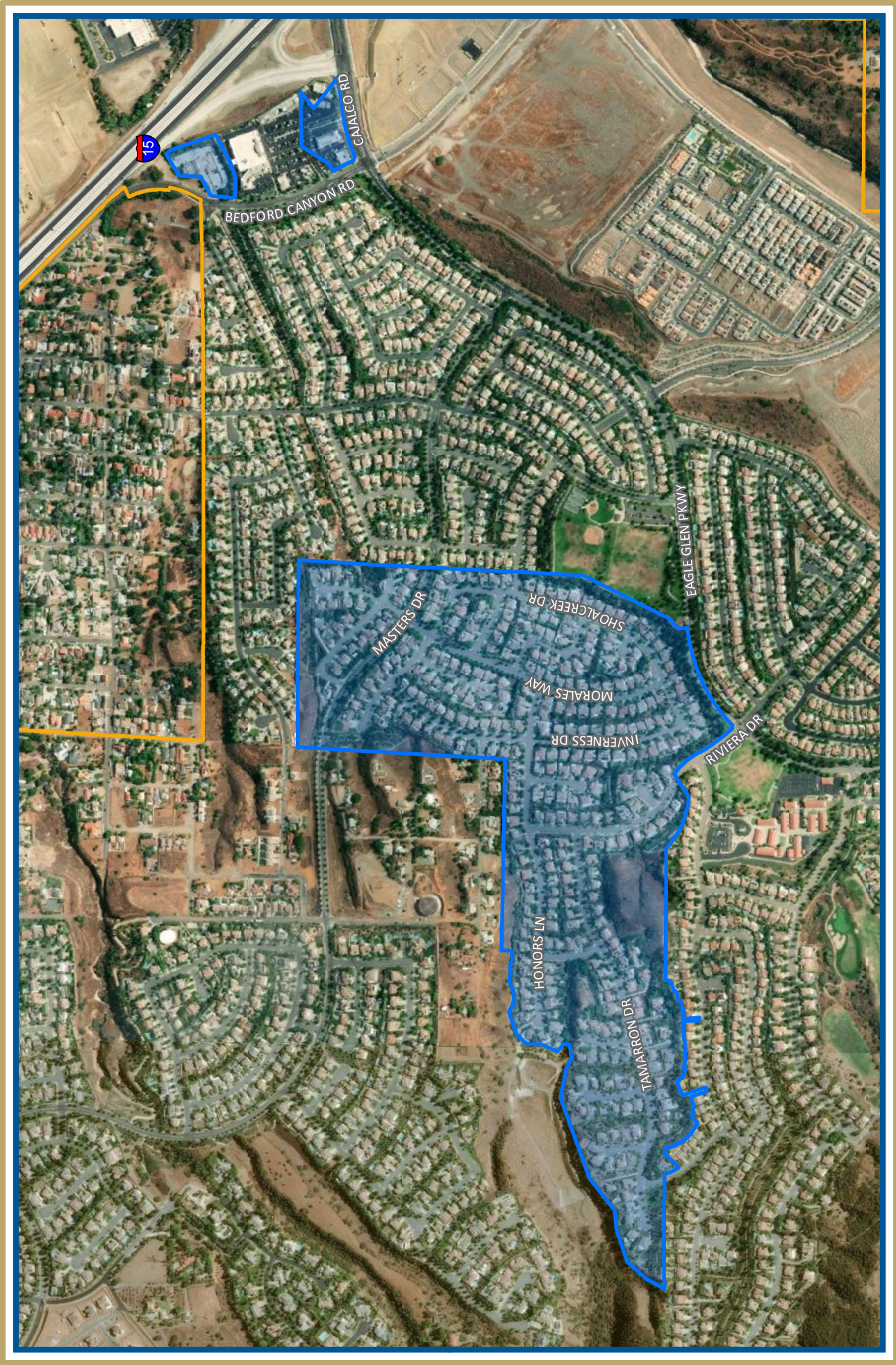
Fiscal Year	Levied		Delinquency		
	Parcels	Amount	Parcels	Amount	% Del.
2019	359	\$21,991.40	0	\$0.00	0.00%
2020	359	\$21,991.40	0	\$0.00	0.00%
2021	359	\$21,991.40	1	\$56.64	0.26%
2022	359	\$21,991.40	1	\$56.64	0.26%
2023	359	\$21,991.40	2	\$113.28	0.52%
Total		\$109,957.00	2	\$226.56	0.21%

APPENDIX A

Boundary Map



SPICER CONSULTING
GROUP



BOUNDARY MAP
COMMUNITY FACILITIES DISTRICT NO. 2000-1
(DEBRIS BASIN)





SPICER CONSULTING
GROUP