

CITY OF CORONA

Annual Report



FISCAL YEAR 2024

COMMUNITY FACILITIES DISTRICT NO. 2016-1
(PUBLIC SERVICES)



SPICER CONSULTING
GROUP

Table of Contents

Sections

1	District Profile	1
2	Special Tax Information	1
3	Payment History	2

Tables

2-1	Maximum Special Tax	1
2-2	Special Tax Breakdown	2
3-1	Delinquency Summary	2

Appendix

Appendix A – Boundary Maps



Community Facilities District No. 2016-1 (Public Services)

1. District Profile

Project Description

The Community Facilities District No. 2016-1 (Public Services) (the “CFD No. 2016-1” or the “District”) was formed to finance the annual costs of providing police, fire protection, and paramedic services being funded by the Special Tax for the CFD No. 2016-1.

Location

The CFD No. 2016-1 is a Citywide district and has multiple zones. Please see the Boundary Maps in Appendix A for more detailed boundaries.

Bond Profile and Principal Amount of Bonds Outstanding

The CFD No. 2016-1 is a non-bonded district.

2. Special Tax Information

Special Tax

The amount collected each year is determined by the Special Tax formula and can vary from year to year, but shall not exceed the maximum authorized (or permitted) Special Tax rates. The amount levied for Fiscal Year 2024 tax year is \$771,947.56. The Maximum Special Tax rates for Fiscal Year 2024 are as follows:

On July 1, commencing on July 1, 2017 the Maximum Special Tax, shall increase by: i) the cumulative percentage increase in the Consumer Price Index for all Urban Consumers (“CPI-U”) for the Riverside-San Bernardino-Ontario California Standard Metropolitan Statistical area as it stands on March of each year over the preceding Fiscal Year, as published by the Bureau of Labor Statistics of the United States Department of Labor, or ii) by four percent (4.00%), whichever is greater. The Bureau of Labor Statistics of the United States Department of Labor has discontinued the Los Angeles-Riverside-Orange County, CA Index. The Consumer Price Index rate for Fiscal Year 2024 is 4.56%.

*Table 2-1
Maximum Special Tax Rates*

Land Use Category	Taxable Unit	Maximum Special Tax
Developed Single Family Residential Property	Residential Unit	\$722.32
Developed Multi-Family Residential Property	Residential Unit	\$501.15

*Table 2-2
Special Tax Breakdown*

Development Zones	Parcels	Units	Levied Amount	Maximum Special Tax	% of Maximum Special Tax
Zone 1	146	146	\$92,149.36	\$105,459.43	87.38%
Zone 3	148	148	\$64,809.20	\$74,169.88	87.38%
Zone 4	92	92	\$58,066.72	\$66,453.89	87.38%
Zone 5	438	460	\$290,334.00	\$332,269.43	87.38%
Zone 6	237	237	\$149,584.92	\$171,190.99	87.38%
Zone 7	1	149	\$65,248.24	\$74,671.03	87.38%
Zone 8	25	25	\$15,779.00	\$18,058.12	87.38%
Zone 11	4	4	\$2,524.64	\$2,889.30	87.38%
Zone 15	2	2	\$1,262.32	\$1,444.65	87.38%
Zone 17	1	1	\$631.16	\$722.32	87.38%
Zone 18	23	23	\$14,516.68	\$16,613.47	87.38%
Zone 20	27	27	\$17,041.32	\$19,502.77	87.38%
Total	1,144	1,314	\$771,947.56	\$883,445.28	87.38%

Termination of Special Tax

For each Fiscal Year the City of Corona provides services the Special Tax shall be levied on all Assessor's Parcels subject to the Special Tax as necessary to satisfy the Special Tax Requirement. The Special Tax shall be in perpetuity as long as the City of Corona provides the services to the District.

3. Payment History

Delinquencies are calculated through June 2023 and may reflect parcels that may already be on a payment plan.

Delinquency Rate for Fiscal Year 2023

As of June 2023, the delinquency rate of CFD No. 2016-1 for Fiscal Year 2023 is 0.84%

Information Concerning Delinquent Parcels

CFD No. 2016-1 delinquency information as of June 2023 is illustrated below:

*Table 3-1
Delinquency Summary*

Fiscal Year	Levied		Delinquency		
	Parcels	Amount	Parcels	Amount	% Del.
2019	118	\$100,046.80	1	\$558.10	0.56%
2020	327	\$276,841.10	2	\$602.13	0.22%
2021	668	\$468,299.40	3	\$1,569.48	0.34%
2022	870	\$576,511.54	6	\$3,018.20	0.52%
2023	1,057	\$672,490.20	12	\$5,642.16	0.84%
Total		\$2,094,189.04	15	\$11,390.07	0.54%

APPENDIX A

Boundary Maps



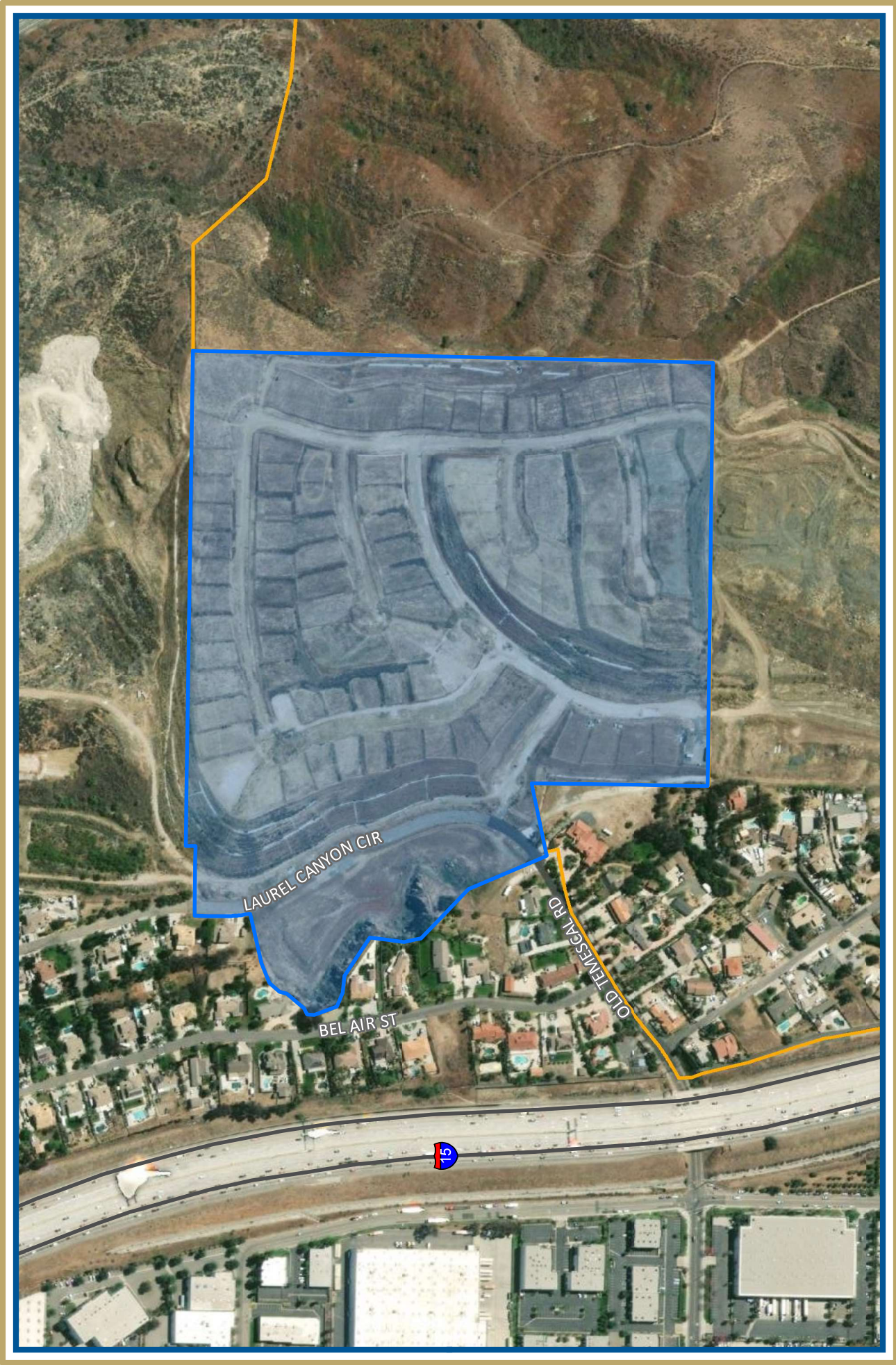
SPICER CONSULTING
GROUP



BOUNDARY MAP

COMMUNITY FACILITIES DISTRICT NO. 2016-1
ZONE 1 (PUBLIC SERVICES)

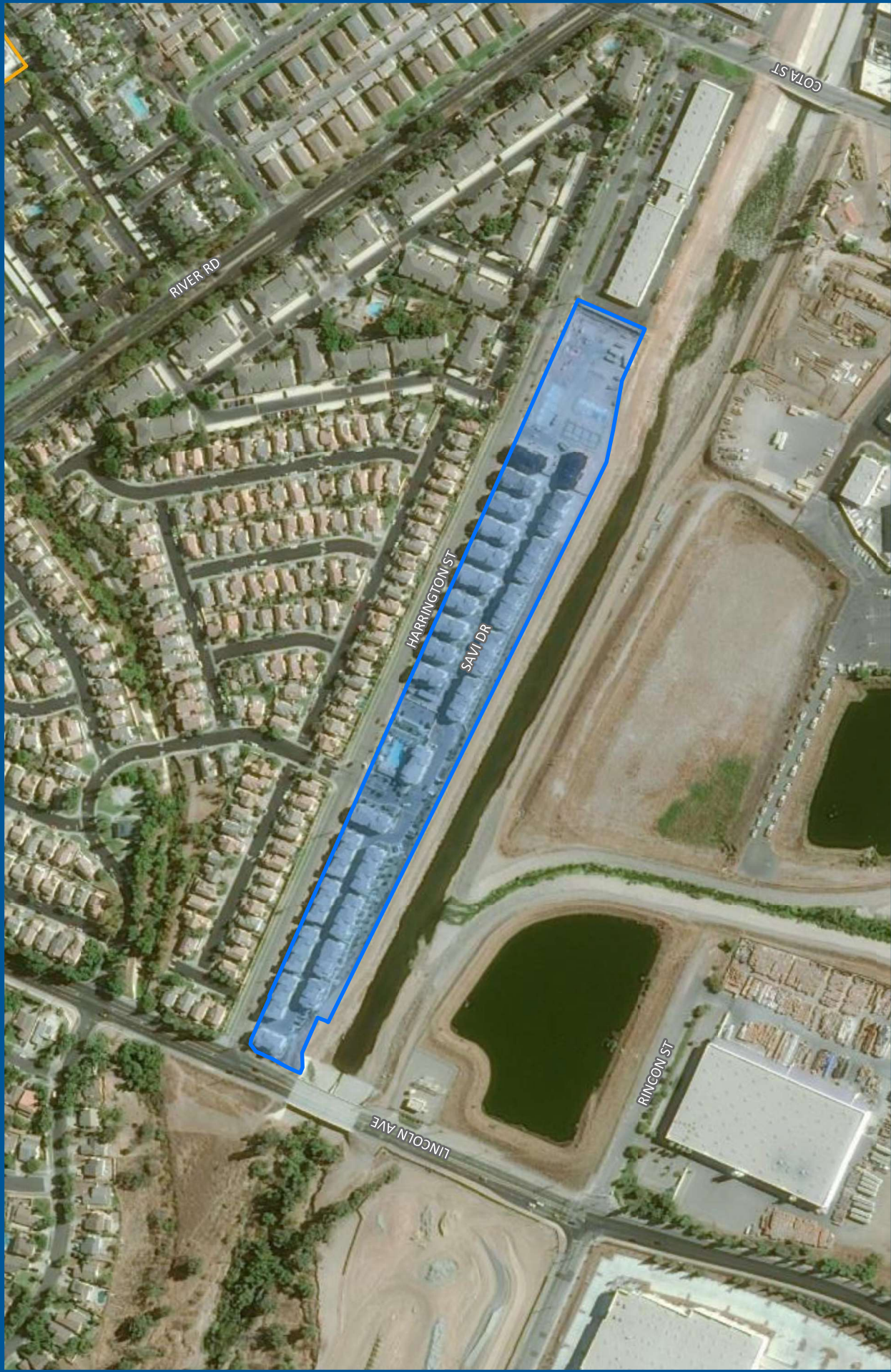




BOUNDARY MAP

COMMUNITY FACILITIES DISTRICT NO. 2016-1
ZONE 2 (PUBLIC SERVICES)

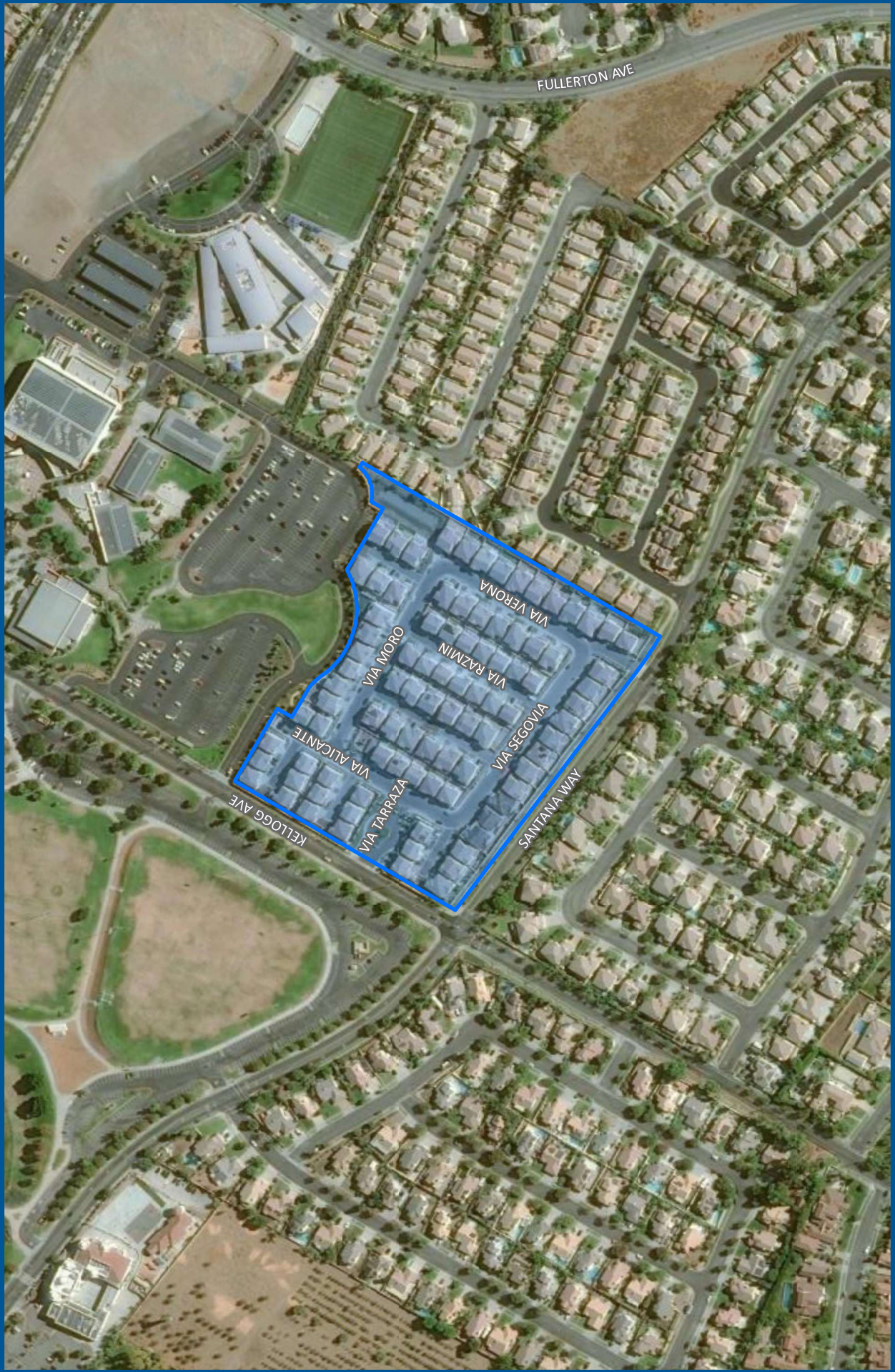




BOUNDARY MAP

COMMUNITY FACILITIES DISTRICT NO. 2016-1
ZONE 3 (PUBLIC SERVICES)





BOUNDARY MAP

COMMUNITY FACILITIES DISTRICT NO. 2016-1
ZONE 4 (PUBLIC SERVICES)





BOUNDARY MAP

COMMUNITY FACILITIES DISTRICT NO. 2016-1
ZONE 5 (PUBLIC SERVICES)





BOUNDARY MAP

COMMUNITY FACILITIES DISTRICT NO. 2016-1
ZONE 6 (PUBLIC SERVICES)





BOUNDARY MAP

COMMUNITY FACILITIES DISTRICT NO. 2016-1
ZONE 7 (PUBLIC SERVICES)

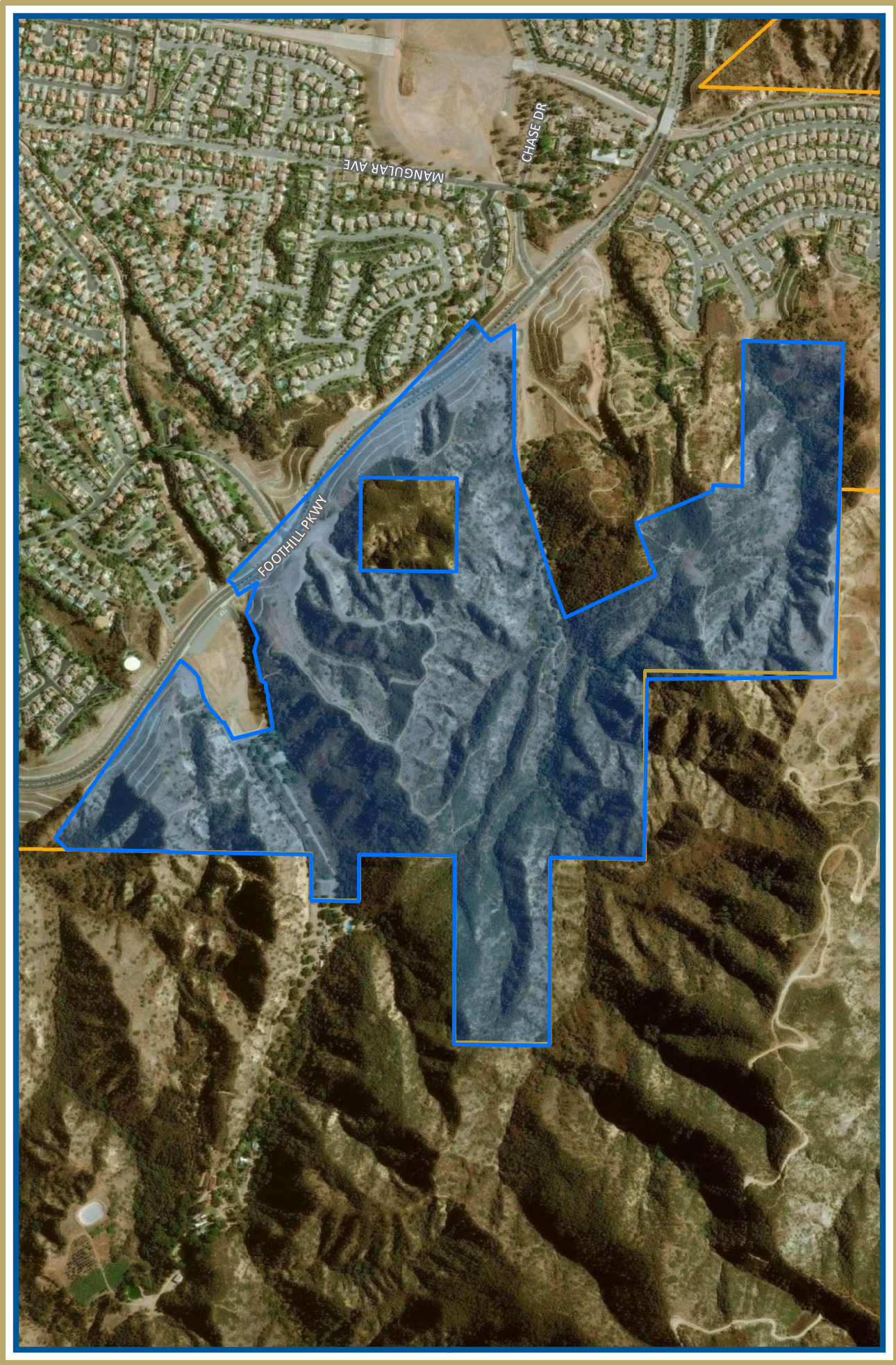




BOUNDARY MAP

COMMUNITY FACILITIES DISTRICT NO. 2016-1
ZONE 8 (PUBLIC SERVICES)





BOUNDARY MAP

COMMUNITY FACILITIES DISTRICT NO. 2016-1
ZONE 9 (PUBLIC SERVICES)





BOUNDARY MAP

COMMUNITY FACILITIES DISTRICT NO. 2016-1
ZONE 10 (PUBLIC SERVICES)





BOUNDARY MAP

COMMUNITY FACILITIES DISTRICT NO. 2016-1
ZONE 11 (PUBLIC SERVICES)





BOUNDARY MAP

COMMUNITY FACILITIES DISTRICT NO. 2016-1
ZONE 12 (PUBLIC SERVICES)

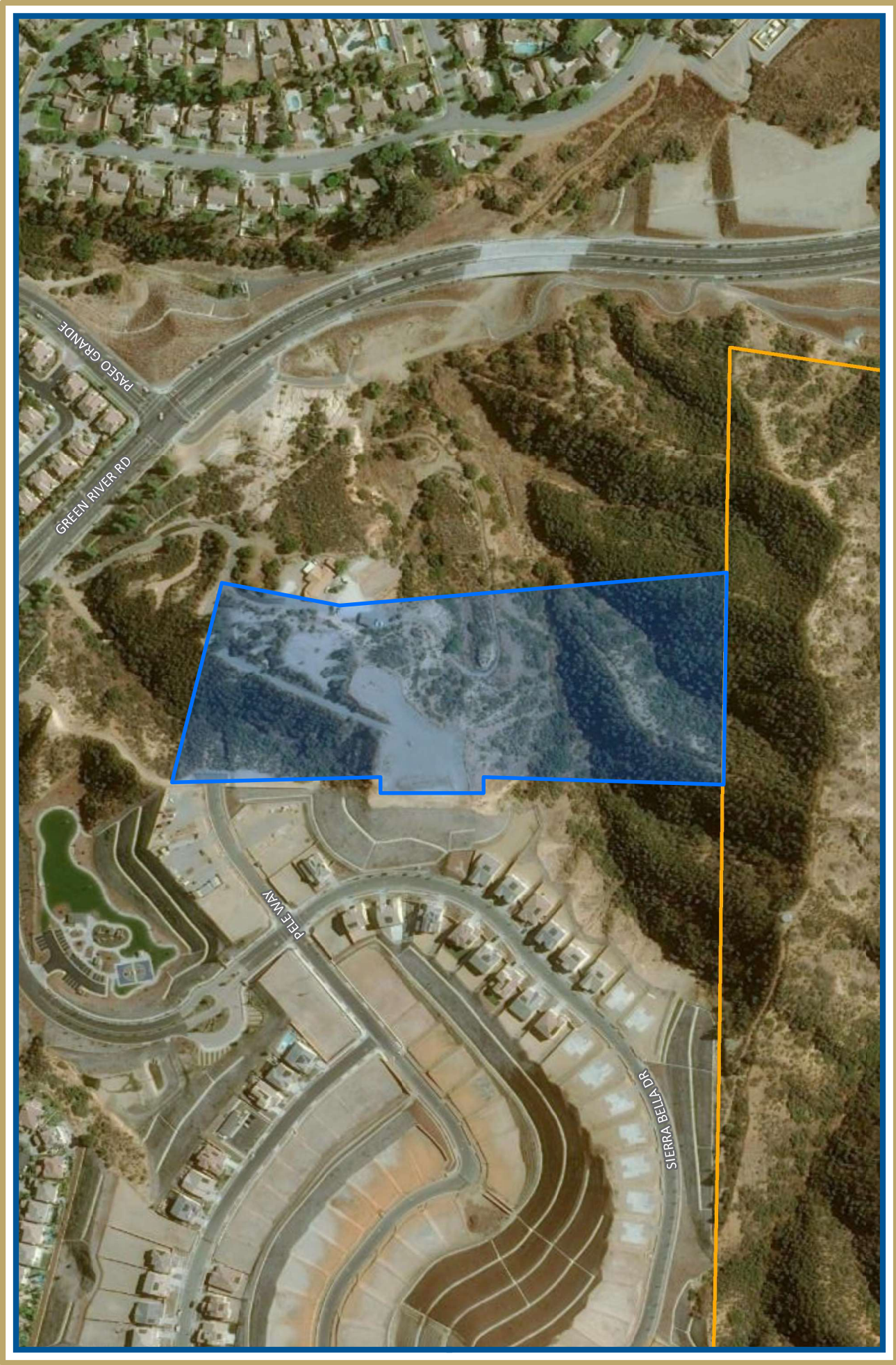




BOUNDARY MAP

COMMUNITY FACILITIES DISTRICT NO. 2016-1
ZONE 13 (PUBLIC SERVICES)

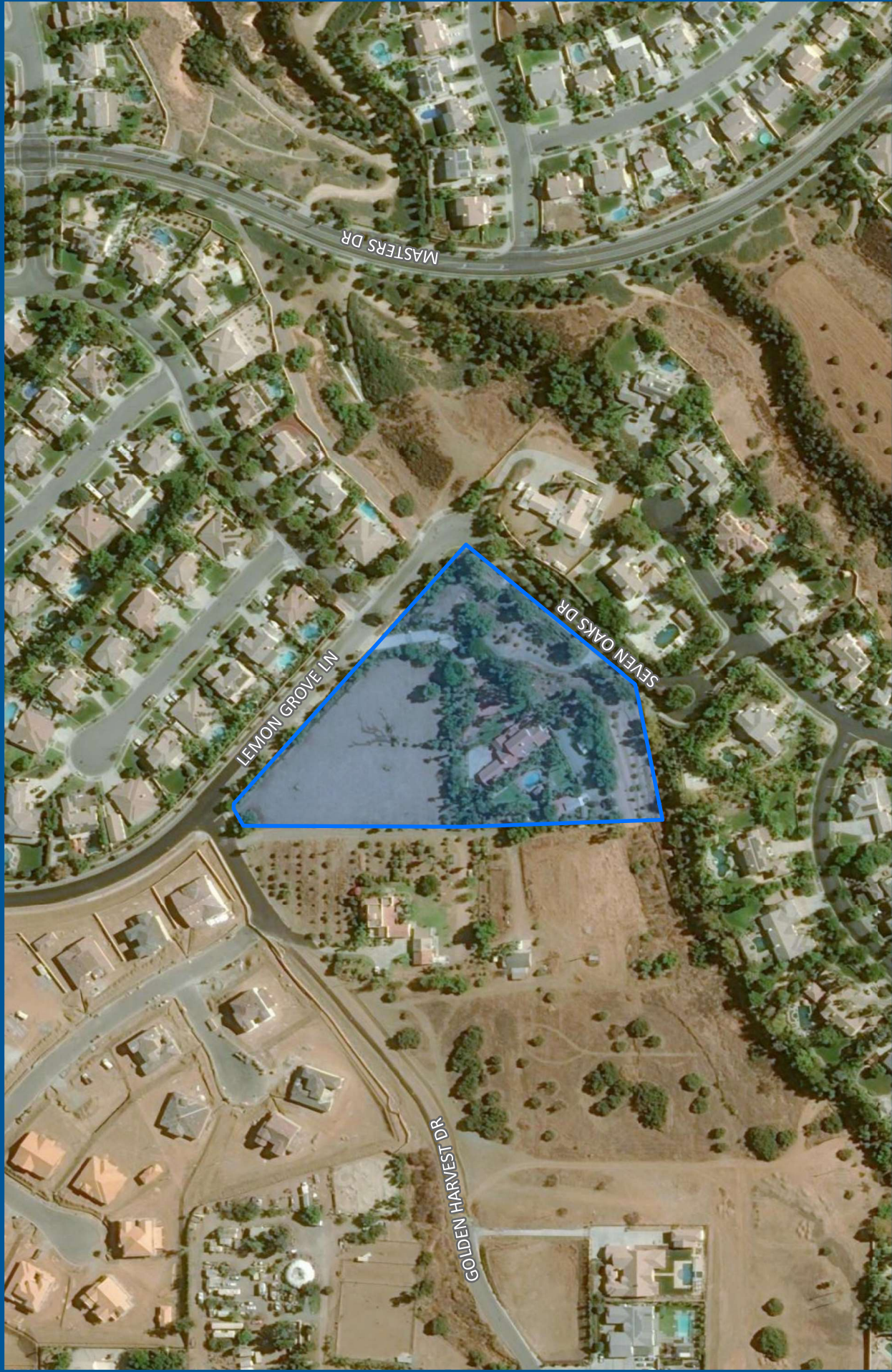




BOUNDARY MAP

COMMUNITY FACILITIES DISTRICT NO. 2016-1
ZONE 14 (PUBLIC SERVICES)





BOUNDARY MAP

COMMUNITY FACILITIES DISTRICT NO. 2016-1
ZONE 15 (PUBLIC SERVICES)





BOUNDARY MAP

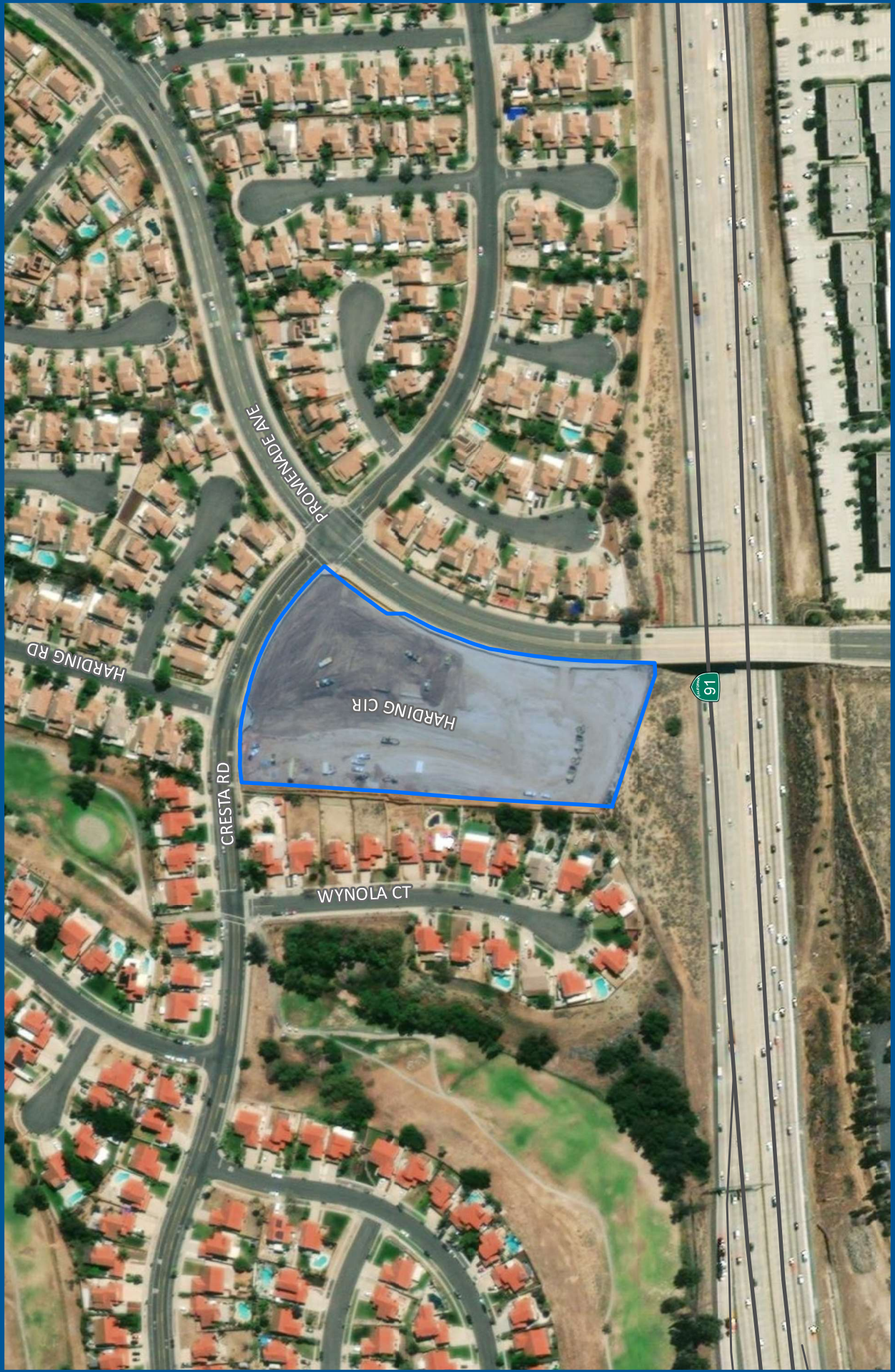
COMMUNITY FACILITIES DISTRICT NO. 2016-1
ZONE 16 (PUBLIC SERVICES)



BOUNDARY MAP

COMMUNITY FACILITIES DISTRICT NO. 2016-1
ZONE 17 (PUBLIC SERVICES)





BOUNDARY MAP

COMMUNITY FACILITIES DISTRICT NO. 2016-1
ZONE 18 (PUBLIC SERVICES)





BOUNDARY MAP

COMMUNITY FACILITIES DISTRICT NO. 2016-1
ZONE 19 (PUBLIC SERVICES)





BOUNDARY MAP

COMMUNITY FACILITIES DISTRICT NO. 2016-1
ZONE 20 (PUBLIC SERVICES)





BOUNDARY MAP

COMMUNITY FACILITIES DISTRICT NO. 2016-1
ZONE 21 (PUBLIC SERVICES)

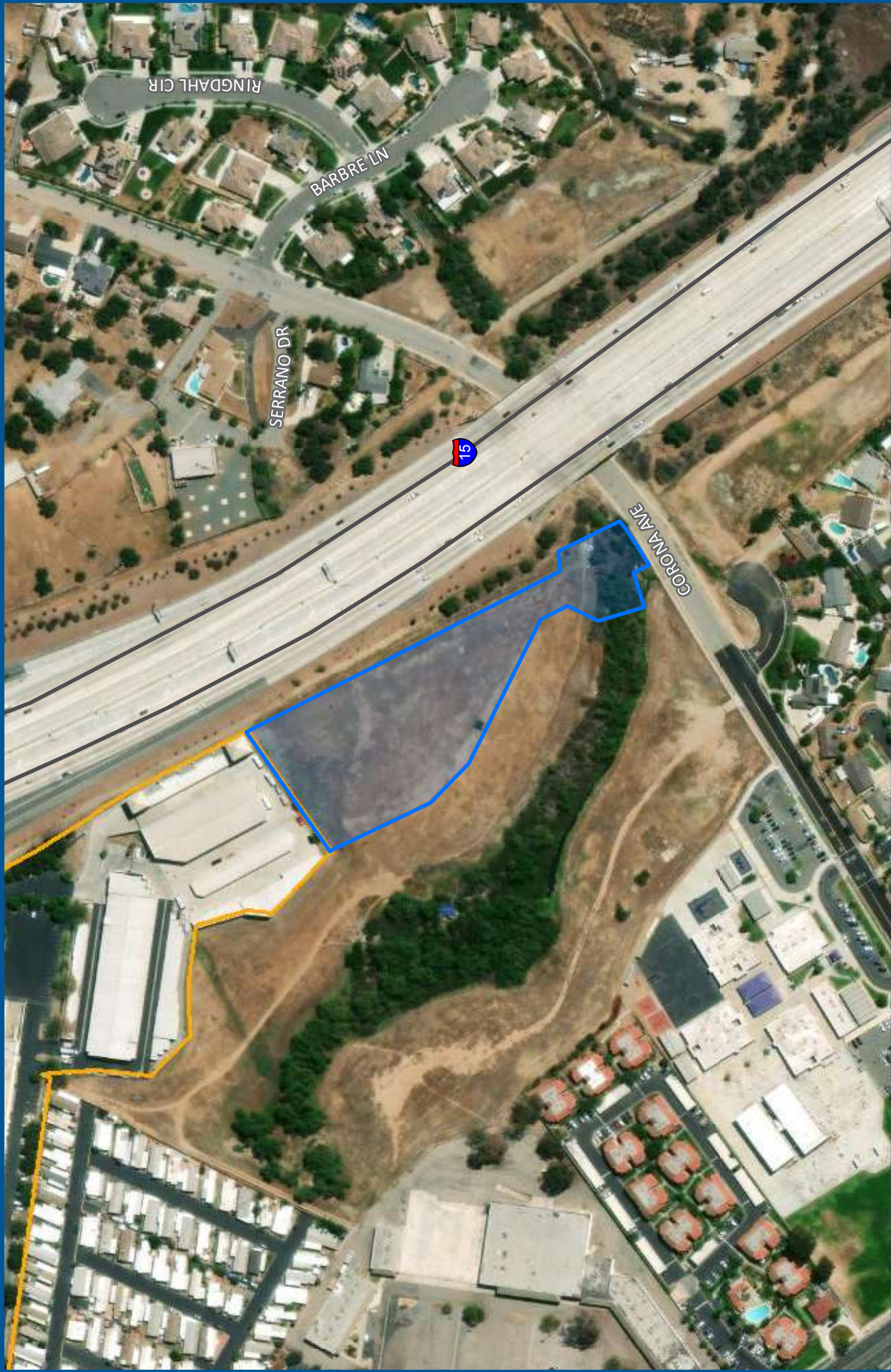




BOUNDARY MAP

COMMUNITY FACILITIES DISTRICT NO. 2016-1
ZONE 22 (PUBLIC SERVICES)





BOUNDARY MAP

COMMUNITY FACILITIES DISTRICT NO. 2016-1
ZONE 23 (PUBLIC SERVICES)





SPICER CONSULTING
GROUP