



city of corona

Activities are provided free of charge unless indicated
PLEASE REGISTER AT RECEPTION DESK

CORONA SENIOR CENTER

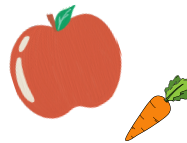
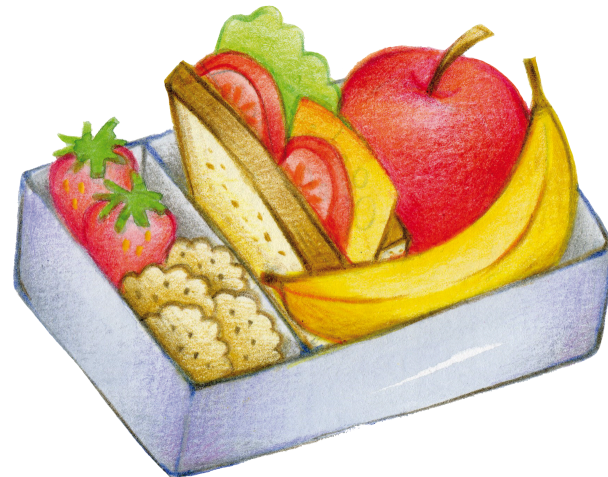


May

LUNCH

Monday-Friday
at 12:00pm

First come, first served.
\$3 Suggested donation!
For any questions regarding lunch,
please call
951-739-4966



Senior Travel Program

Carlsbad Flower Fields

Monday
May 6

9:00am-6:00pm
\$100 Per Person



PICK UP AND DROP OFF AT CIRCLE CITY CENTER

Corona Senior Center Staff

- Lydia Bouroumand**
Program Coordinator
- Elaina Toth**
Assistant Recreation Coordinator
- Amal Mahran**
Senior Community Service Leader
- Grecia Santiago**
Senior Community Service Leader
- Jacky Wilson**
Senior Community Service Leader
- Kim Brown**
Community Service Leader
- Les Brown**
Community Service Leader
- Amanda Buenrostro**
Community Service Leader
- Neda Gogani**
Community Service Leader
- David Kang**
Community Service Leader
- Julia Monir**
Community Service Leader
- Claudia Romero**
Community Service Leader
- Penny Williams**
Community Service Leader



Corona Senior Center

921 South Belle Avenue
Corona, CA 92882
(951) 736-2363
www.CoronaCA.gov

Hours of Operation

Monday - Thursday:
9:00am to 6:00pm
Friday: 9:00am to 3:30pm
Closed: Saturdays & Sundays

Thank You To Our Sponsors

AARP. Alpha Care. Citrus Valley Medical. Brookdale Senior Living. 211, Community Action Partnership. Corona Dial-A-Ride. Corona Fire Department. Corona Police Department. Corona Public Library. Dr Rios Clinica Medica Familiar. Elise Simmons. Estancia Del Sol. HICAP. InnovAge. Law Steady. Mint Insurance. Mobility Plus. MV Transportation. NCL. Neighborhood Healthcare PACE. Office on Aging. Research for Life. Right at Home. SBHIS. Scan. Sodexo. Starbucks. Thomas Miller Mortuary and Crematory. VNA Hospice.

MONDAY

9:00am Pilates
 9:15am Men's Exercise
 9:30am Party Bridge
 10:00am Women's Exercise
 12:00pm Lunch
 1:00pm Balance and Flexibility
 2:00pm- 3:30pm Bingo

TUESDAY

9:00am Arthritis Exercise
 9:00am- 12:00pm Mixed Media
 10:15am Combination Ex. A
 11:00am Combination Ex. B
 12:00pm Lunch
 1:00pm Longevity Stick
 2:00pm-3:30pm Tai-Chi
 2:00pm-4:00pm Knit-Crochet
 4:00pm-5:30pm Line Dance(Beg.)

WEDNESDAY

9:00am Hispanic Social Circle
 9:15am Men's Exercise
 10:00am-12:00pm Ladies Card Club
 10:00am-11:30am Line Dance Imp/Int
 12:00pm Lunch
 1:00pm-3:00pm Beginning Crochet
 2:00pm-3:30pm Tai Chi

THURSDAY

9:00am Arthritis Exercise
 9:00am-11:15am Party Quilters
 9:00am-11:00am Illusion of Living
 10:15am Combination Ex. A
 11:00am Combination Ex. B
 12:00pm Lunch
 2:00pm Grief Support Group

FRIDAY

9:00am-11:15am Mixed Media
 9:00am-12:00pm Beginning Quilting
 9:30am Balance & Flexibility
 11:00am Men's Exercise
 12:00pm Lunch
 1:30pm-2:30pm Bingo

SATURDAY

Classes Listed in the Columns to the Left Occur Every Week on the Days/Times Shown.

CLOSED SATURDAYS & SUNDAYS

"A mother is she who can take the place of all others, but whose place no one else can take."
 CARDINAL MEYMILLOD



1

9:30am Glucose Testing
 Sponsored by Alpha Care
 12:00pm HICAP
 Health Insurance Counseling Advocacy Program
 Appt. Required
 12:30pm Presentation
 Normal Aging Vs. Dementia
 Brookdale Senior Living

2

9:30am Information Table
 Caption Call
 No Combination Exercise

3

10:30am Computer Basics
 Pre-Registration Required
 12:15pm Birthday Celebration
 Sponsored by Alpha Care

4

6

9:00am-6:00pm Travel Program
 Carlsbad Flower Fields
 Pre-Registration Required
 10:30 am Craft Class
 Sponsored by SBHIS
 Pre-Registration Required
 2:00pm Bingo
 Caption Call by Sorenson



7

11:00am Legal Services Appt. Required
 Sponsored by Mark Lansing Esq. Law Steady
 1:00pm Women's Improvement Bridge
 No Combination Exercise

8

12:30pm Presentation
 DOC Talk with Dr. Magina
 Mint

9

10:30am Build Your Own
 Mother's Day Bouquet
 Ricardo De La Torre Mint
 Pre-Registration Required



10

1:30pm Bingo
 Mobility Plus

11

13

No Balance & Flexibility

14

9:00am-11:00am Library Lounge
 10:00am Computer Basics
 Pre-Registration Required

15

9:30am Glucose/Blood
 Pressure Screening
 Sponsored by Citrus Valley Medical
 12:30pm Presentation
 Age Well Drive Smart
 California Highway Patrol

16

10:00am Information Table
 Optum Care Network
 4:00pm- 6:00pm Mother's Day Tea
 Party
 Humana Pre-Registration Required
 Center will be closed at 2:00pm
 for special event set up



17

10:30am Computer Basics
 Pre-Registration Required

No Balance & Flexibility

18

20

2:00pm Bingo
 Clinica Medica Familiar
 No Balance & Flexibility

21

9:30am C.S.F.P. Food Program
 Sponsored by Community Action Partnership
 9:15am Information Table
 Cal. Fresh Feeding America
 9:30am Information Table
 Clinica Medica Familiar
 1:00pm Women's Improvement Bridge

22

9:30am Blood Pressure Screening
 Sponsored by Citrus Valley Medical
 1:00pm-4:00pm Alpha Care Fun Fair

23

9:30am Information Table
 Research for Life
 No Grief Support

24

1:30pm Bingo
 Mobility Plus
 No Balance & Flexibility

25



27

9:30am Information Table
 Mobility Plus
 10:00am Computer Basics
 Pre-Registration Required

28

12:30pm Presentation
 DOC Talk
 Clinica Medica Familiar

29

9:30am Information Table
 Mint
 No Grief Support

30

31

