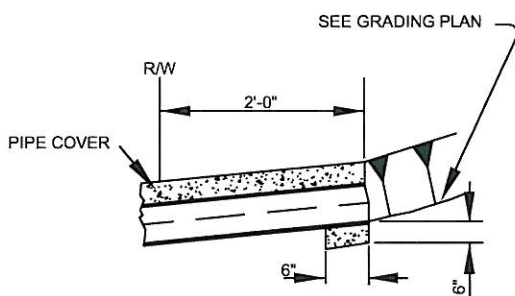
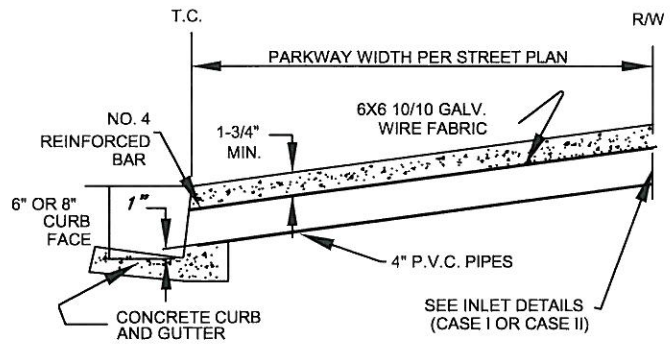


CASE I INLET
TRANSITION STRUCTURE SECTION



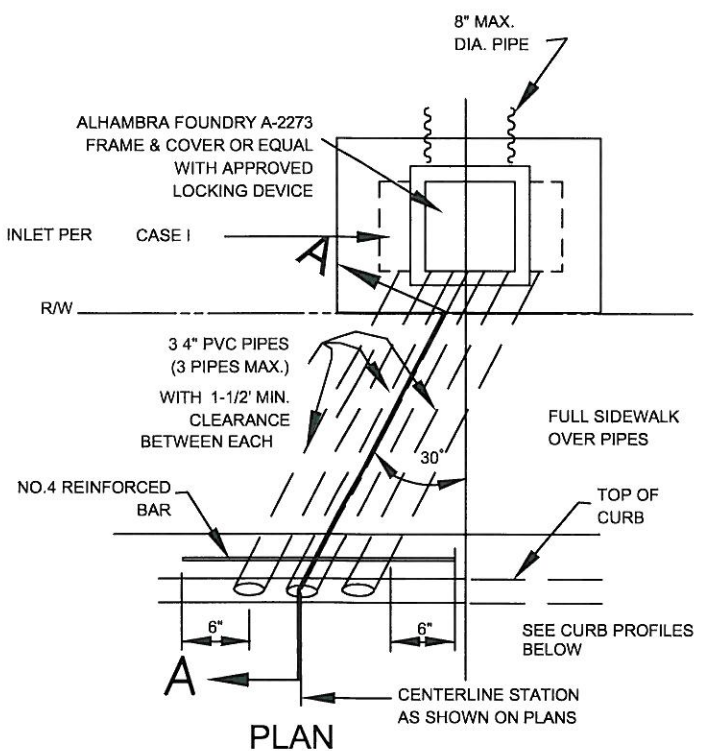
CASE II INLET



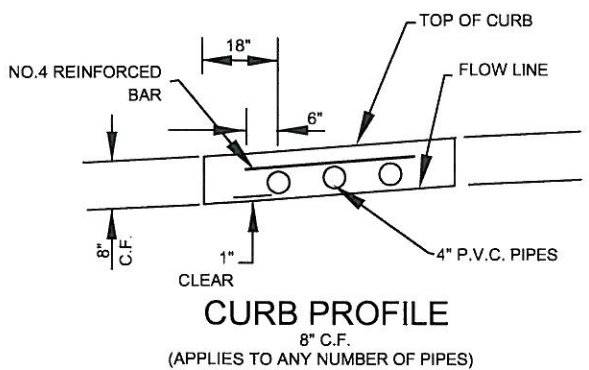
SECTION "A-A"

NOTES:

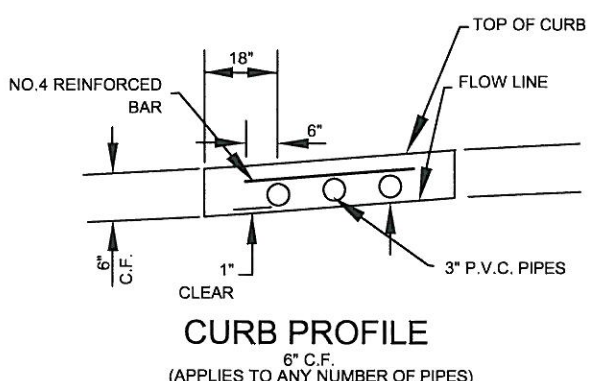
1. SEE STANDARD PLAN 201-2 FOR DETAILS AND NOTES.
2. ALHAMBRA FOUNDRY A-470 RECTANGULAR CAST IRON PIPE MAY BE SUBSTITUTED AT THE CONTRACTOR'S OPTION OR AS SPECIFIED ON THE PLANS.
3. CAST IRON FACILITIES SHALL HAVE A BITUMINOUS COATING CONFORMING TO AASHTO DESIGNATION:M190.
4. P.V.C. PIPES SHALL BE SCHEDULE 40 OR AS SPECIFIED ON THE PLANS.



PLAN



CURB PROFILE
8" C.F.
(APPLIES TO ANY NUMBER OF PIPES)



CURB PROFILE
6" C.F.
(APPLIES TO ANY NUMBER OF PIPES)



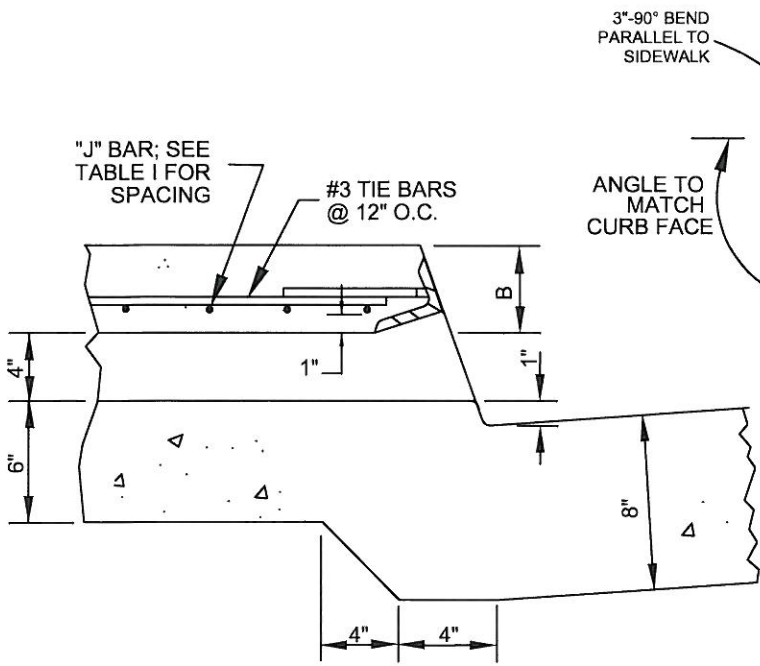
APPROVED BY:
KIP D. FIELD 11/23/09
CITY ENGINEER DATE
KIP D. FIELD

CITY OF CORONA

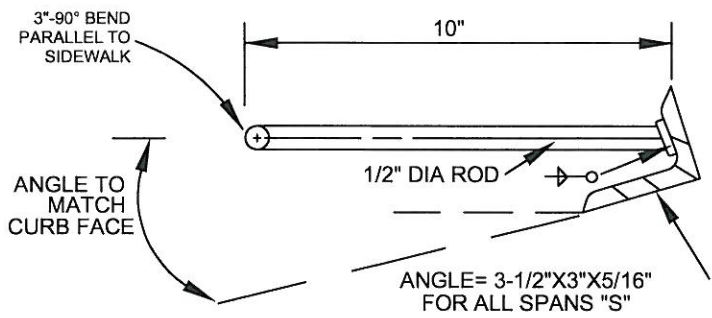
**PARKWAY CULVERT
TYPE "B"**

REVISION	DESCRIPTION	BY	DATE

STANDARD PLAN NUMBER: **201** SHT 1 OF 2



OUTLET DETAIL



LENGTH OF CURB OPENING	NO. OF ANCHORS
3' OR LESS	2
3'-0" TO 6'-0"	3

FACE ANGLE ANCHOR DETAIL

NOTES:

1. USE PARKWAY CULVERT-TYPE "A" WHEN INLET VELOCITIES WILL BE 10 FEET PER SECOND OR GREATER.
2. USE PARKWAY CULVERT-TYPE "B" WHEN INLET VELOCITIES WILL BE LESS THAN 10 FEET PER SECOND.
3. FLOOR OF PARKWAY CULVERT SHALL HAVE A SMOOTH FINISH.
4. ALL EXPOSED METAL SHALL BE GALVANIZED AFTER FABRICATION.
5. SPAN "S" WILL BE DETERMINED FROM THE REQUIRED HYDRAULIC CAPACITY AND LIMITED TO THE DIMENSION IN TABLE I.
6. REINFORCING STEEL SHALL BE 1" CLEAR TO INSIDE OF CULVERT UNLESS OTHERWISE SPECIFIED.
7. TYPE, DIMENSIONS, AND ELEVATIONS PER IMPROVEMENT PLAN.

SPAN "S"	B	STEEL SCHEDULE J-BARS		
		SIZE	SPACING C-C	LENGTH
2'-0"	3"	#3	7"	2'-9"
2'-6"	3"	#3	7"	3'-3"
3'-0"	3"	#3	7"	3'-9"
3'-6"	3"	#3	6"	4'-3"
4'-0"	3"	#3	5"	4'-9"
4'-6"	4"	#3	6-1/2"	5'-3"
5'-0"	4"	#3	5"	5'-9"
5'-6"	4"	#3	4"	6'-3"
6'-0"	4"	#3	3-1/2"	6'-9"

TABLE I



APPROVED BY: *Kip D. Field* 11/23/09
 CITY ENGINEER DATE
 KIP D. FIELD

CITY OF CORONA
PARKWAY CULVERT DETAILS AND NOTES
 STANDARD PLAN NUMBER: **201** SHT 2 OF 2

REVISION	DESCRIPTION	BY	DATE