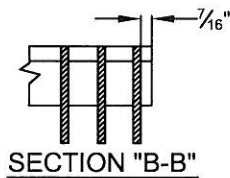
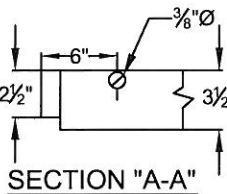


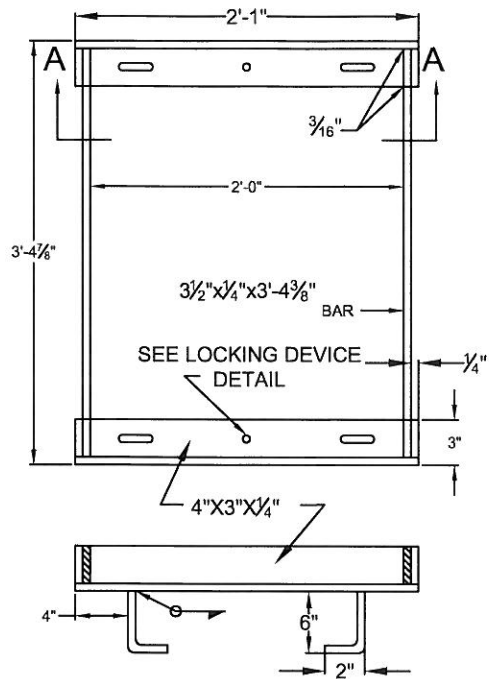
3/16" FILLET WELD FULL DEPTH EACH SIDE ALL BARS.



**WELDED STEEL GRATE**

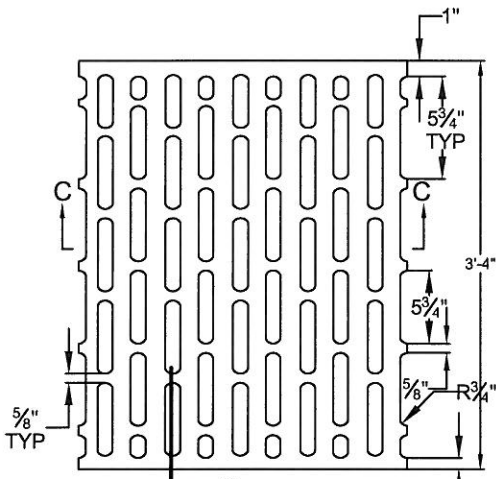
**NOTES:**

1. BEARING BARS TO BE 3/2"X1/4" BARS ON 1 1/8" CENTERS.
2. 3/8"Ø CROSS BARS RESISTANCE WELDED OR ELECTROFORGED TO BEARING BARS.
3. USE TYPICAL FRAME AS SHOWN.
4. ALL GALVANIZED AFTER FAB.



**SECTION 'A-A'**

**TYPICAL FRAME**

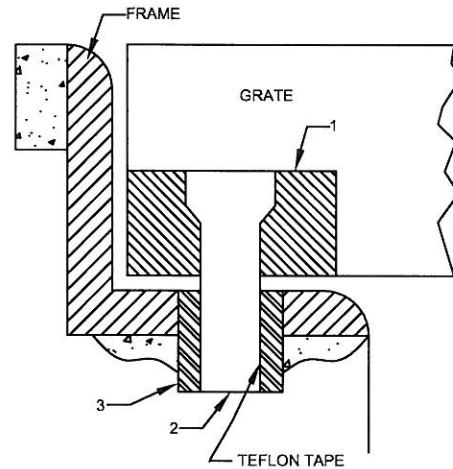


**CAST IRON GRATE**

**NOTES:**

WEIGHT OF GRATE 155 LBS. USE TYP. FRAME AS SHOWN

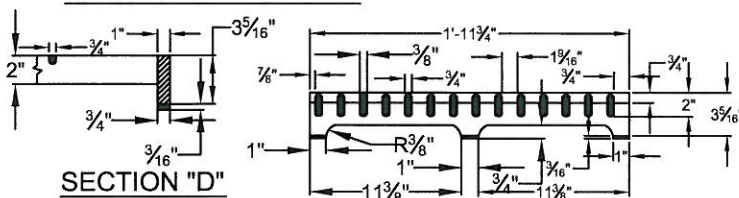
1. USE 3/4" THICK STL. BAR. DRILL 1/2" HOLE & COUNTERSINK WITH 3/4" DRILL 3/8" DEEP. WELD TO GRATE
2. 1/2" DIA. ALLEN BOLT.
3. USE 1/2" CONCRETE ANCHOR OR 1/2" THREADED RECEIVER WELDED TO FRAME.



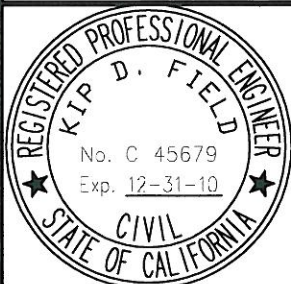
**LOCKING DEVICE**

**NOTE:**

TO BE USED WITH THE WELDED STEEL GRATE. PAINT TO PREVENT RUST.



**SECTION 'C-C'**



APPROVED BY: *[Signature]* 11/23/09  
 CITY ENGINEER DATE  
 KIP D. FIELD

**CITY OF CORONA**

**CATCH BASIN TYPE "C"  
 GRATE AND FRAME**

REVISION	DESCRIPTION	BY	DATE

STANDARD PLAN NUMBER: **208** SHT 1 OF 1