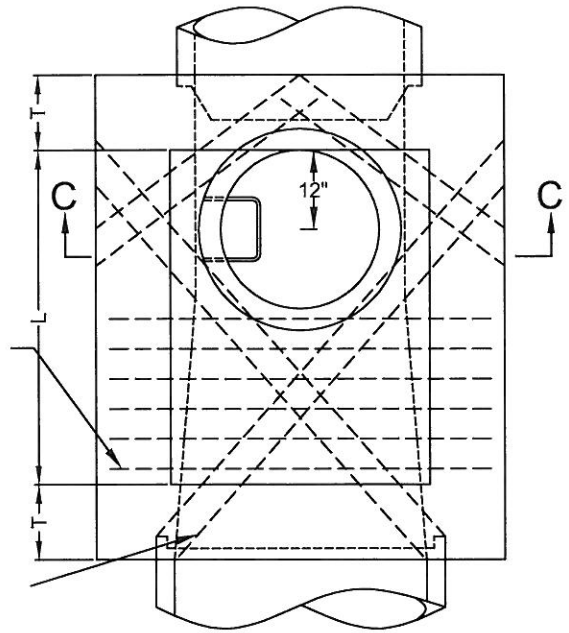


PLAN
(SHAFT NOT SHOWN)



DETAIL N PLAN
(SHAFT NOT SHOWN)
SEE NOTE 4

H- HEIGHT H (IN SECTION "A-A" AND SECTION "B-B") SHALL BE NO LESS THEN 4 FOOT 0 INCHES, BUT MAY BE INCREASED PROVIDED THAT THE VALUE OF M SHALL BO NO LESS THEN THE MINIMUM SPECIFIED AND THAT THE REDUCER SHALL BE USED. FOR H (SECTION "C-C") SEE BELOW.

L- LENGTH L SHALL BE 4 FEET UNLESS OTHERWISE SHOWN ON PLAN. L MAY BE INCREASED OR LOCATION OF MANHOLE SHIFTED TO MEET PIPE ENDS.

M- SHAFT SHALL BE CONSTRUCTED AS PER SECTION "C-C" AND DETAIL N WHEN DEPTH M FROM STREET GRADE TO TOP OF BOX IS LESS THEN 2 FEET 10 1/2" FOR PAVED STREETS OR 3 FEET 6 INCHES FOR UNPAVED STREETS.

P- DEPTH MAT BE REDUCED TO AN ABSOLUTE LIMIT OF 6 INCHES WHEN LARGER VALUES OF P WOULD REDUCE H (IN SECTION "C-C") TO 3 FEET 6 INCHES OR LESS.

T- T SHALL BE 8 INCHES FOR H UP TO AND INCLUDING 8 FEET. T SHALL BE 10 INCHES FOR H OVER 8 FEET.

NOTES

SEE STANDARD 207 FOR STEPS.

CONCRETE SHALL BE CLASS 560-C-3250.

REINFORCING STEEL SHALL BE PER 212.

STATIONING OF MANHOLES SHOWN ON PLAN APPLY AT CENTERLINE OF SHAFT. ELEVATIONS ARE SHOWN AT SHAFT CENTER AND REFER TO THE PROLONGED INVERT GRADE LINE. SEE NOTE L FOR SHIFTING LOCATION.



APPROVED BY:
Kip D. Field 11/23/09
CITY ENGINEER DATE
KIP D. FIELD

CITY OF CORONA

**STORM DRAIN MANHOLE
PLAN VIEWS AND NOTES**

REVISION	DESCRIPTION	BY	DATE

STANDARD PLAN NUMBER: **214** SHT 1 OF 1