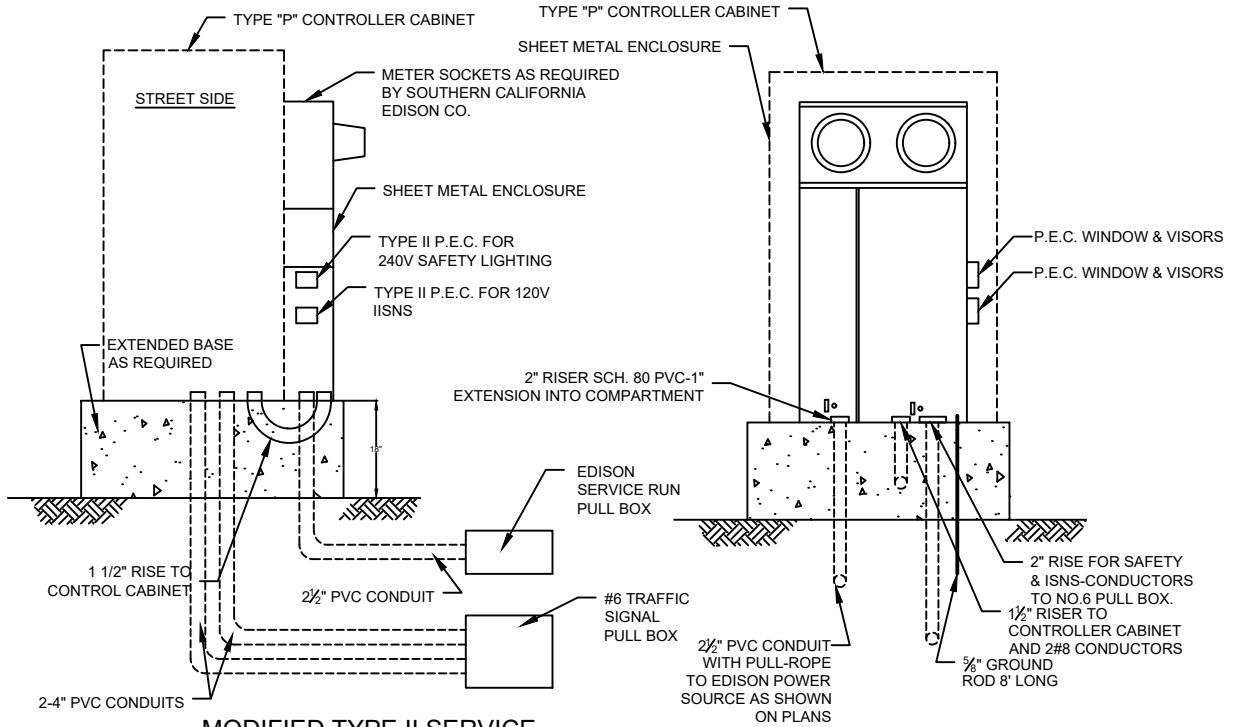


GENERAL ELECTRIC-CAT. NO. GES 2D-C (CORONA MODEL) OR APPROVED EQUAL TRAFFIC SIGNAL AND INTERNALLY ILLUMINATED STREET NAME SIGN SHALL BE 120 VOLT SYSTEM (METERED). SAFETY LIGHTING SHALL BE 240 VOLT SYSTEM (METERED).

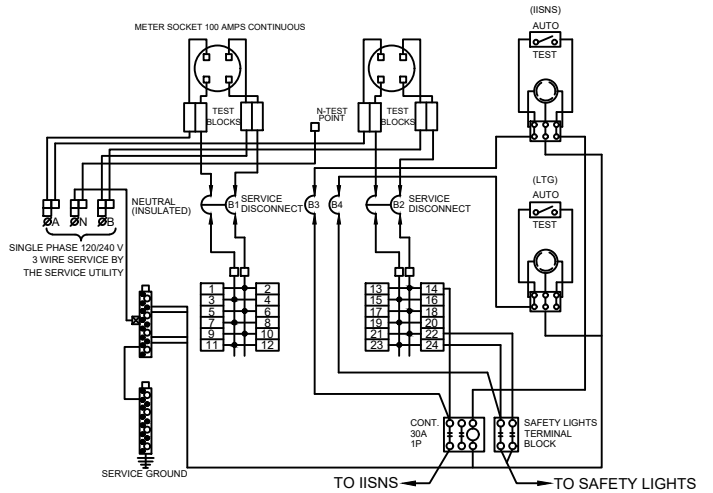
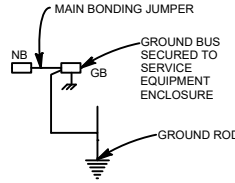


MODIFIED TYPE II SERVICE

CIRCUIT DIRECTORY			
ITEM No.	COMPONENT	AMP	POLES
B1	SERV DISC 1	100	2
4	SIGNAL	30	1
6	FLASHER	15	1
8	FUTURE	15	1
B2	SERV DISC 2	100	2
14	IISNS	15	1
22,24	SAFETY LIGHTS	20	2
B3	CONTROL (SIGNS)	15	1
B4	CONTROL (LIGHTING)	15	1
23	FUTURE	15	1

NOTES:

- ON TYPE 170 CONTROLLER CABINET, TYPE II SERVICE TO BE MOUNTED 1 FOOT ABOVE FOUNDATION WITH SKIRT TO BE PROVIDED, SKIRT MAYBE REQUIRED ON OTHER CABINET AS DETERMINED BY ENGINEER IN FIELD.
- PHOTO ELECTRIC CONTROLS SHALL BE ENCLOSED WITH SERVICE CABINET.
- EACH P.E.C. SHALL HAVE 2"X2" LEXAN WINDOW AND VISOR FACING EAST.
- EACH P.E.C. CIRCUIT SHALL HAVE AN AUTO TEST SWITCH.
- CONTRACTOR TO FURNISH 3 SETS OF SHOP DRAWINGS FOR APPROVAL BY THE ENGINEER.
- PROVIDE 2 NO. 10 AWG BLACK OR RED WIRES FOR 240 VOLT SAFETY LIGHTING. PROVIDE 2 NO. 12 AWG BLACK AND WHITE WIRES FOR INTERNALLY ILLUMINATED STREET NAME SIGN. THESE CIRCUITS SHALL NOT ENTER TRAFFIC CONTROLLER PANEL.
- P.C.E. SHALL BE PROVIDED WITH 3-PRONG EEI-NEMA STANDARD TWIST-LOCK PLUG MOUNTINGS. EACH P.E.C. SHALL BE EQUIPPED WITH A BUILT-IN TIMER DELAY FEATURE.
- ALL CONCRETE SHALL BE CLASS 560-C-3250.
- CABINET SHALL BE PAINTED SEAFOAM GREEN



REVISIONS:			APPROVED BY: <i>Tom Koper</i> 10/8/2020	CITY OF CORONA	
NO.	DATE	APPR'VD		TRAFFIC SIGNAL TYPE II SERVICE PANEL	
1	10/1/20	<i>TK</i>	DATE		
			CITY ENGINEER TOM G. KOPER		
			RCE NO. <u>C50258</u>		
			STANDARD PLAN NUMBER: 506		SHT 1 OF 1