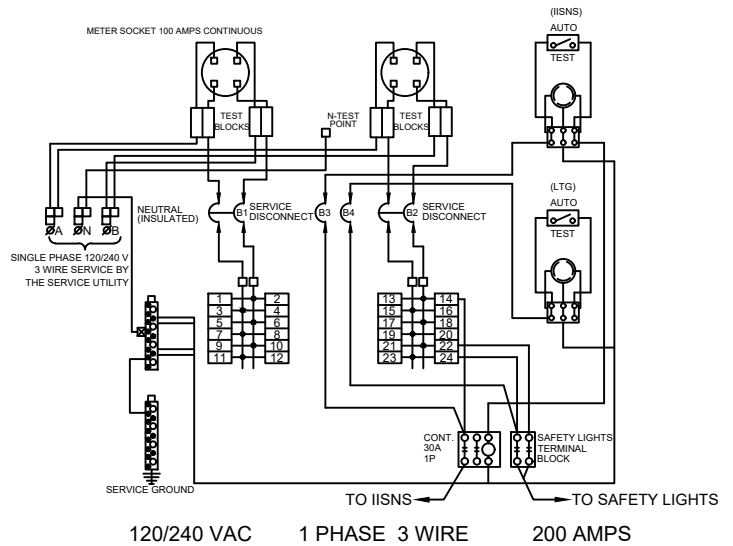
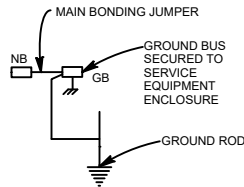


TYPE III-CF SERVICE EQUIPMENT ENCLOSURE WITH PROVISIONS FOR TWO 100 A METERS (TYPICAL)

CIRCUIT DIRECTORY			
ITEM No.	COMPONENT	AMP	POLES
B1	SERV DISC 1	100	2
4	SIGNAL	30	1
6	FLASHER	15	1
8	FUTURE	15	1
B2	SERV DISC 2	100	2
14	IISNS	15	1
22,24	SAFETY LIGHTS	20	2
B3	CONTROL (SIGNS)	15	1
B4	CONTROL (LIGHTING)	15	1
23	FUTURE	15	1



NOTES: (FOR SERVICE EQUIPMENT ENCLOSURE)

- PHOTO ELECTRIC CONTROLS SHALL BE ENCLOSED WITH SERVICE CABINET.
- EACH P.E.C. SHALL HAVE 2"x2" LEXAN WINDOW AND VISOR FACING EAST WITH SHIELDS.
- EACH P.E.C. CIRCUIT SHALL HAVE AN AUTO TEST SWITCH.
- CONTRACTOR TO FURNISH 3 SETS OF SHOP DRAWINGS FOR APPROVAL BY THE ENGINEER.
- PROVIDE 2 NO. 10 AWG BLACK OR RED WIRES FOR 240 VOLT SAFETY LIGHTING. PROVIDE 2 NO. 12 AWG BLACK AND WHITE WIRES FOR INTERNALLY ILLUMINATED STREET NAME SIGN. THESE CIRCUITS SHALL NOT ENTER TRAFFIC CONTROLLER PANEL.
- P.E.C. SHALL BE PROVIDED WITH 3-PRONG EEL-NEMA STANDARD TWIST-LOCK PLUG MOUNTINGS. EACH P.E.C. SHALL BE EQUIPPED WITH A BUILT-IN TIMER DELAY FEATURE.
- ALL CONCRETE SHALL BE CLASS 560-C-3250.
- CABINET SHALL BE PAINTED SEAFOAM GREEN

ELECTRICAL SYSTEMS (SERVICE EQUIPMENT AND TYPICAL WIRING DIAGRAM TYPE III - CF SERIES) NO SCALE

REVISIONS:			APPROVED BY: <i>Tom Koper</i> 10/8/2020	CITY OF CORONA
NO.	DATE	APPR'V'D		
1	2/21/12	KF	CITY ENGINEER TOM G. KOPER	TRAFFIC SIGNAL STANDARD TYPE III SERVICE PANEL
2	10/1/20	<i>TK</i>		
RCE NO. <u>C50258</u>			DATE	STANDARD PLAN NUMBER: 507
				SHT 1 OF 1