

**MATERIAL** - ALUMINUM OR STAINLESS STEEL, 0.125" 5052-H32, SURFACE SHALL HAVE A NATURAL "MILL FINISH"

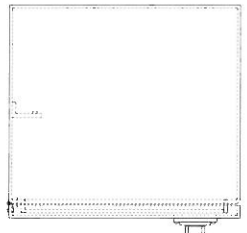
**PAINT** - POLYMERIC OR ENAMEL CALTRANS GREEN FINISH COLOR NO. 14672

**DOORS & LOCKS** - DOORS ARE NEMA TYPE 3R CONSTRUCTION WITH NEOPRENE GASKET, RAIN TIGHT. CONTINUOUS HINGE IS .075 THICK ALUMINUM WITH S/S PIN, SECURED WITH 1/4-20 S/S CARRIAGE BOLTS. STANDARD EQUIPMENT SHALL BE THREE POINT LOCKING SYSTEMS WHICH SECURES DOOR AT TOP AND BOTTOM, WITH A #2 CORBIN LOCK, DOOR RODS ARE 1/4" X 3/4" ALUMINUM BAR WITH 1" NYLON ROLLERS, MAIN DOOR HANDLE IS STEEL BRUSH ZINC PLATED.

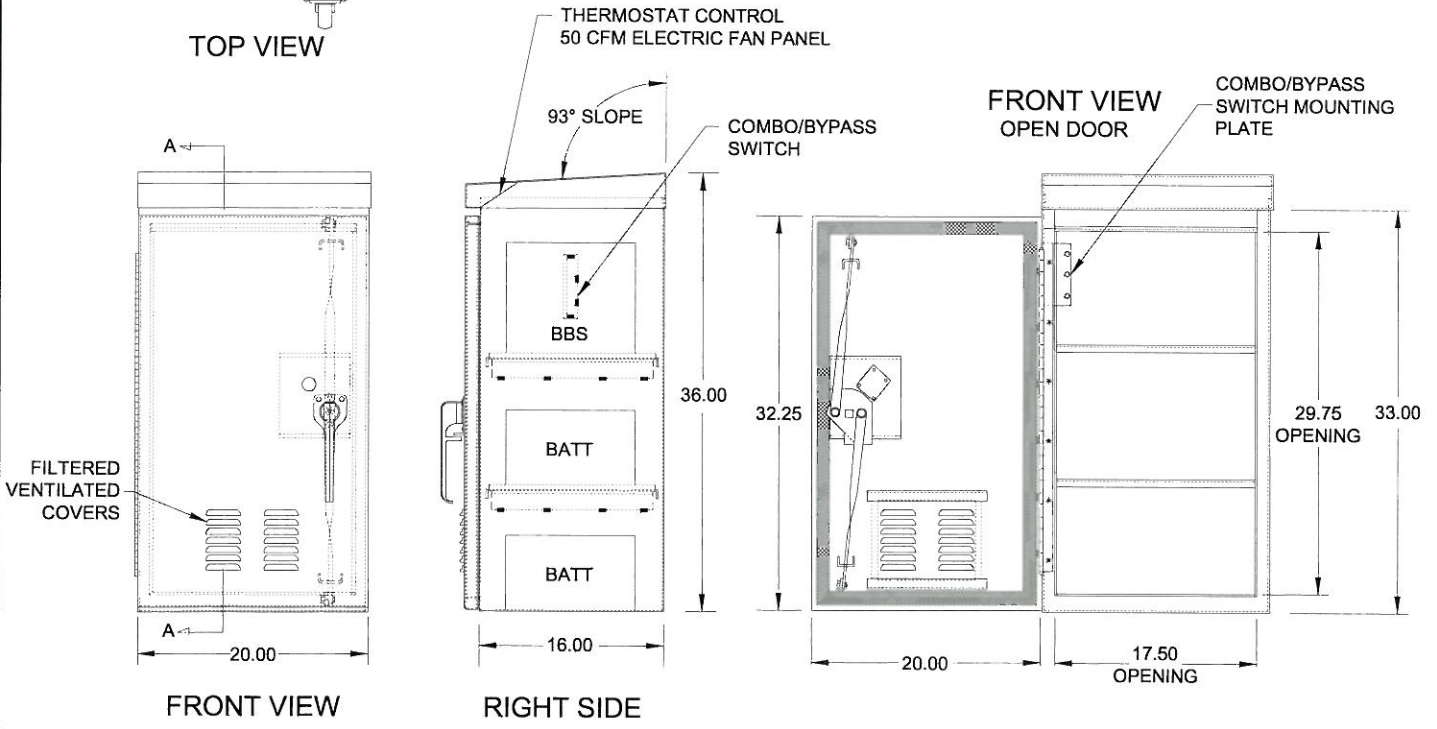
**SHELVES** - TWO FULL WIDTH BY 14.75" DEEP REMOVABLE SHELVES FURNISHED WITH EACH CABINET.

**VENTILATION** - A THERMOSTAT CONTROLLED ELECTRIC FAN SHALL BE PROVIDED AND A VENT PATTERN PROVIDED ON THE UNDERSIDE OF THE COVER OVERHANG AND LOUVER SLOTS FORMED IN THE LOWER PORTION OF THE MAIN DOOR TO CREATE A NATURAL MOVEMENT OF AIR AND HAS A COOLING EFFECT ON THE ELECTRICAL EQUIPMENT. THE EXHAUST AND THE INTAKE SHALL BE RAIN TIGHT AND SHOULD NOT DRAIN WATER INTO THE CABINET.

**MOUNTING** - MOUNT BATTERY BACK UP CABINET TO THE SIDE OF TRAFFIC SIGNAL "P" CABINET WITH FOUR 1/2" X 1 1/4" LONG STAINLESS STEEL BOLTS, NUTS, AND WASHERS.



TOP VIEW



FRONT VIEW

RIGHT SIDE

FRONT VIEW  
OPEN DOOR



APPROVED BY: *Kip D. Field* 11/23/09  
 CITY ENGINEER DATE  
 KIP D. FIELD

CITY OF CORONA  
 TRAFFIC SIGNAL BATTERY  
 BACK UP CABINET  
 STANDARD PLAN NUMBER: 508 SHT 1 OF 1

REVISION	DESCRIPTION	BY	DATE