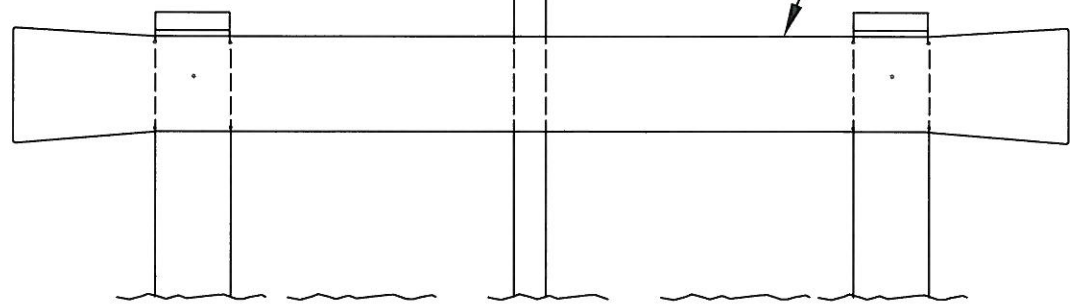


2 1/2" SQ. POST TYP.
SEE STD. 519


METAL BEAM GUARD RAILING
(SEE NOTE 3)



NOTES:

1. ONE W31 SHALL BE PLACED AT THE END OF EACH ROADWAY AS SHOWN ON THIS STANDARD PLAN.
2. LENGTH OF METAL BEAM GUARD RAILING SHALL BE IN MULTIPLES OF 12'-6", PLUS 1'-9" FOR EACH END PIECE.
3. SEE STANDARD PLAN 525 FOR METAL BEAM GUARD RAILING DETAILS.



APPROVED BY:

 11/23/09
 CITY ENGINEER DATE
 KIP D. FIELD

CITY OF CORONA
METAL BEAM GUARD RAILING

REVISION	DESCRIPTION	BY	DATE

STANDARD PLAN NUMBER: **524** SHT 1 OF 1