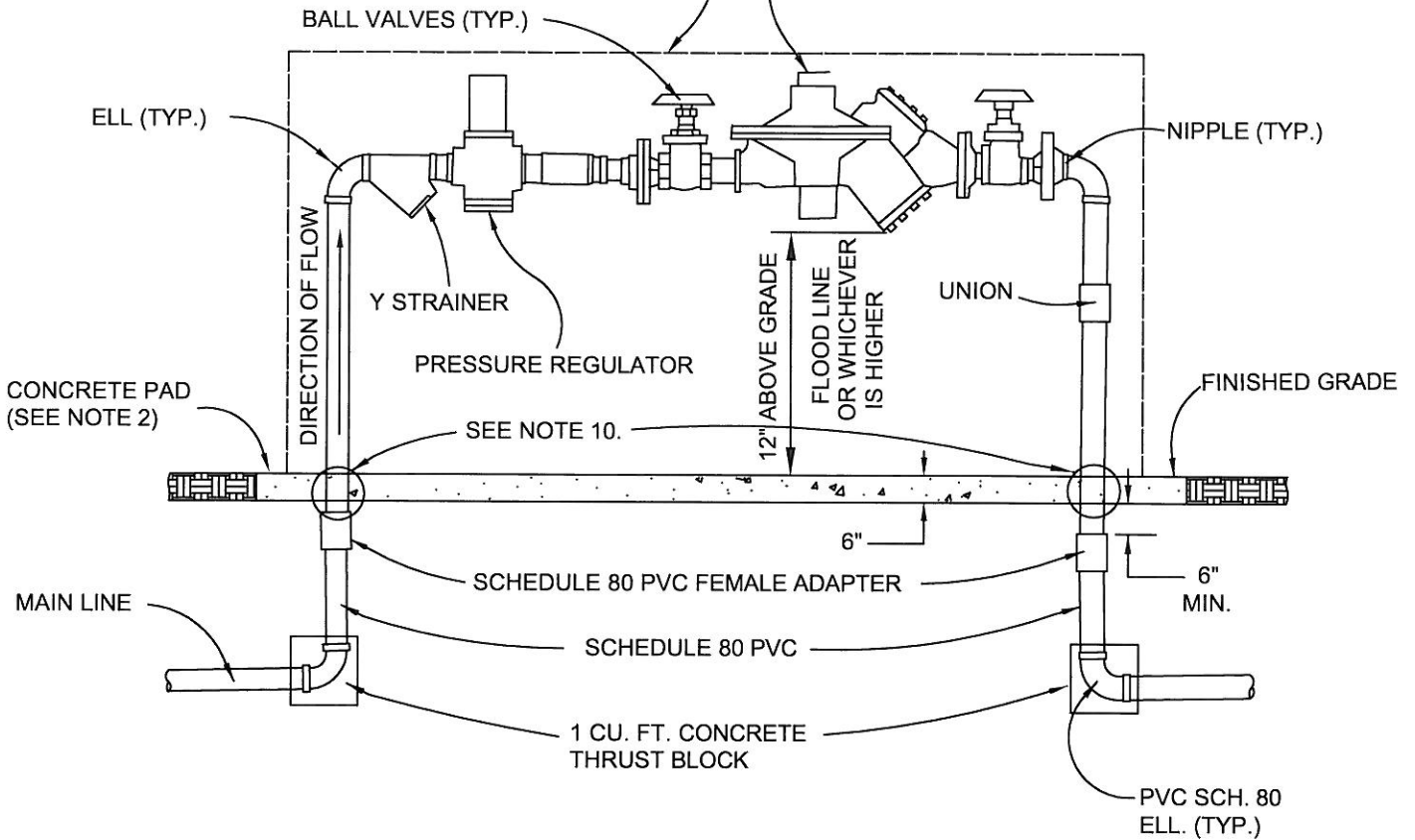


LOCKABLE BPGDI GUARD SHACK OR APPROVED
EQUAL EXPANDED METAL ENCLOSURE.
(SIZE AS REQUIRED)
POWDER COAT PAINT- FOREST GREEN

REDUCED PRESSURE TYPE
BACKFLOW PREVENTER ASSEMBLY
(FEBCO 825 Y OR APPROVED EQUAL).



NOTES:

1. ALL PIPE FITTINGS SHALL BE BRASS UNLESS OTHERWISE SPECIFIED.
2. CONCRETE SHALL BE 520-C-3250.
3. THE BACKFLOW PREVENTER DEVICES AND INSTALLATIONS SHALL BE APPROVED BY THE LOCAL DEPARTMENT OF HEALTH SERVICES AND WATER AGENCY.
4. VALVE ASSEMBLIES MAY HAVE SCREWED FITTINGS OR FLANGED FITTINGS.
5. COAT ALL EXPOSED THREADS WITH AN APPROVED RUST INHIBITING SEALANT.
6. TEFLON TAPE, 1/2" WIDE, SHALL BE USED ON ALL THREADED CONNECTIONS.
7. DISSIMILAR METALS SHALL BE SEPARATED BY AN APPROVED DIELECTRIC COUPLING.
8. PLASTIC PIPE SHALL NOT BE USED ABOVE FINISHED GRADE.
9. BACKFLOW PREVENTION DEVICES SHALL BE CERTIFIED BY LICENSED BACKFLOW TESTER.
10. BRASS NIPPLE SHALL BE WRAPPED WITH ASPHALT MASTIC COATED MATERIALS WHEN INSTALLED IN CONCRETE.

REDUCED PRESSURE

SYMBOL ON PLAN



APPROVED BY:
Kip D. Field 11/23/09
CITY ENGINEER DATE
KIP D. FIELD

CITY OF CORONA

BACKFLOW PREVENTER

REVISION	DESCRIPTION	BY	DATE

STANDARD PLAN NUMBER: **613** SHT 1 OF 1