



Section 7 Utilities Research

GOALS

To identify, locate, and quantify existing utilities that cross or run parallel to the recommended trail alignment.

PROJECT PROCESS

- Obtained digital and paper copies of utilities in the Cities of Corona, Norco and Eastvale, and the County of Riverside*.
- Mapped and catalogued utilities data along recommended trail alignment.
- Identified areas where conflicts might occur for gas, sewer, storm, and water lines, and locations of street lights and electric poles and lines.

* A table of the documents and files provided by the cities is included in this Section. The documents and files are provided as an electronic appendix.



Blank Page

Introduction

This section of the report identifies areas of the proposed alignments which may be impacted by existing public utilities based on available data. These areas are listed in Table 7-1 on the following page and include:

- Type of utility,
- Associated agency,
- Reach location,
- Description of the utility and the trail crossing condition, and
- Source of the utility information.

The table also provides a reference to corresponding Map Exhibits that graphically identify the utility crossing areas. Table 7-2 provides a detailed listing of the plans and data files used to identify the trail alignment and utility crossing areas.

Process

1. Existing utility information provided by the municipalities and agencies was collected, compiled, and compared with the proposed trail alignments.
2. Where possible, GIS utility data was overlaid onto the trail alignment GIS maps to facilitate the identification of areas of potential impact.
3. GIS attributes associated with the utilities, along with metadata, were reviewed to provide pipe size, material, and additional information where possible.
4. When only record drawings of utility information were available, a side-by-side comparison with trail alignment maps was made and, when feasible, compared with on-line aerial data to verify existing conditions.

The identified utility locations are based on a review of available existing utility documents and data. Field verification of location of utilities should be done prior to final engineering and construction. Contact Underground Service Alert (USA) at 811, at least two business days prior to beginning excavation.

Utility Data Sources

The Cities of Corona and Norco were the main sources of the utility information included in this inventory and used in the planning of the trail alignments.

Corona

The City of Corona provided GIS files depicting the spatial locations of storm and sanitary sewers as well as water mains. Metadata for the storm drain utility GIS data files has also been provided. The metadata includes pipe sizes and material types, pipe slopes, and structure inverts.

Norco

The City of Norco has provided PDF files of plan drawings for utility projects located in the vicinity of proposed trail alignments. These are record documents from the City and also provide right-of-way, signalization, and pavement striping information in addition to underground sewer, water, and gas line data.

JCSD

The JCSD provided utilities maps of properties that are adjacent to the Riverside County Regional Park and Open-Space District property just upstream of the River Rd. bridge. These documents show no underground utilities adjacent to or running onto the park property.

The recommended alignment along the bluff north of Prado Basin Park road will be on private property if agreements with the property owners can be reached. When that property is developed, the trail is planned to be a condition of approval and the developer will identify existing utilities, if any.

Other

Additional utility information was also provided by Riverside County, the JCSD, the Santa Ana Watershed Project Authority (SAWPA), and the USACE.

A GIS file for major underground gas lines was obtained from HTSI, Inc. This file was compared to Southern California Gas Co. online-maps, as well as information supplied by the USACE, to verify location and type of gas lines.

Using close up views available from MSN.com and Google Earth, the SART alignment was manually scanned for power poles and street light locations. These locations were catalogued in Table 7-3 at the end of this section. Power poles and street lights were identified along Bluff St. in Riverside County and on the roadway alignment locations in Norco. In these locations the soft surface trail will use existing equestrian trails which will present no conflicts. In the few select areas where connections between existing equestrian trails are required field verification of existing utilities should be performed prior to beginning construction. In the following locations the existing or proposed pavement is wide enough to accommodate proposed Class II Bike lanes, so there would be no conflicts:

Corydon Ave.,
Norco Dr.,
Cedar Ave.,
Alhambra St.,
Acacia Ave., and
Taft St.,

Other streets with no conflicts are:

River Dr.,
Pedley Ave.,
Eighth St.,
Crestview
Arlington Ave., and
River Rd.

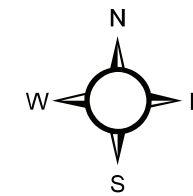
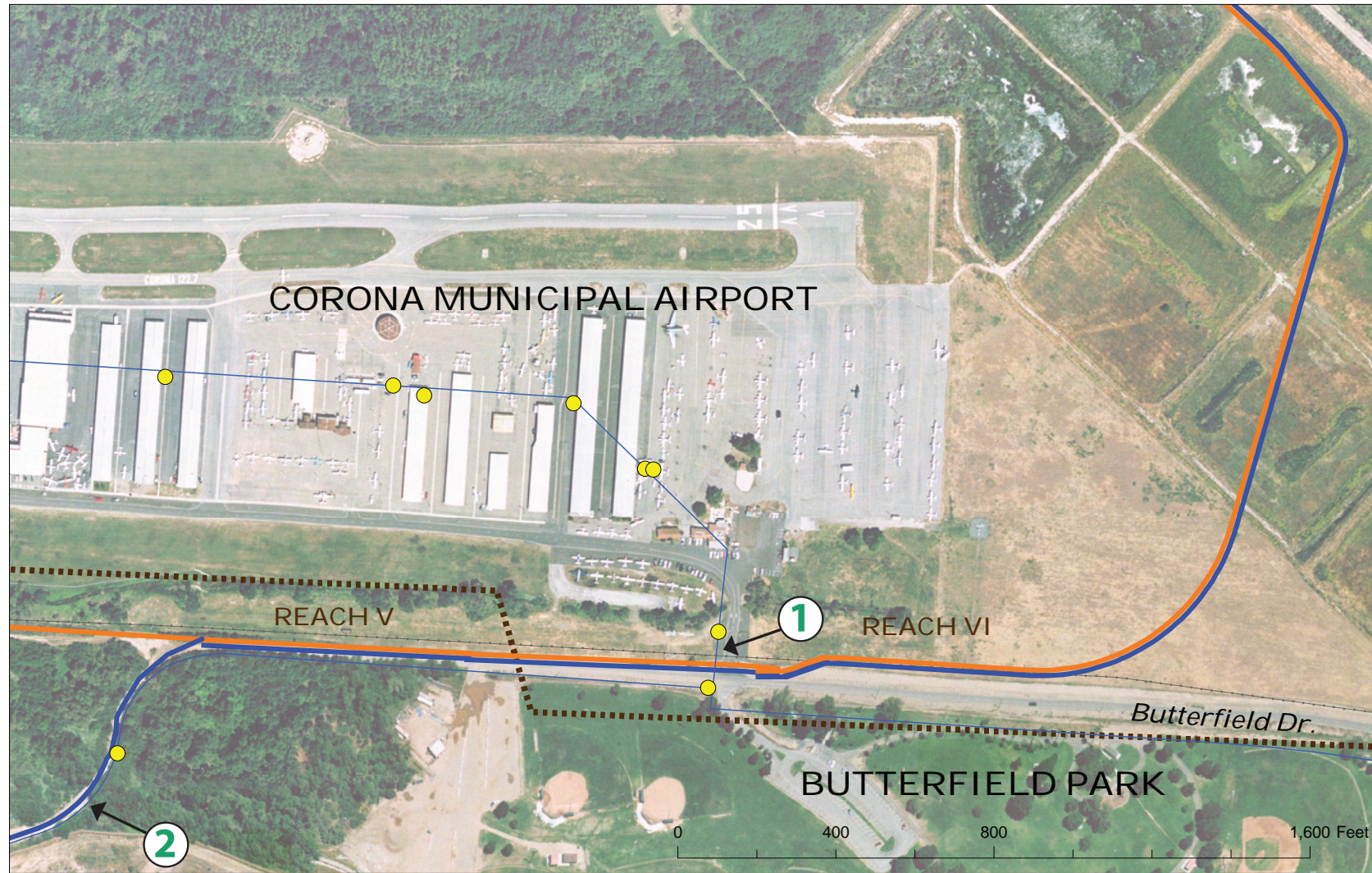
Between Taft St. and Detroit St. on Old Hamner Rd. there is one stretch of pavement adjacent to a street lamp that will need to be moved.

Table 7-1: Utility ¹Conflict Data for Santa Ana River Trail








Note 1. Utilities information was collected from the following agencies:
 City of Corona, City of Norco, Jurupa Community Services District, Southern California Gas Company, HTSI, Inc, USACE.
 Please see the report text for more detailed information.

Only areas of potential conflict are listed on this table.

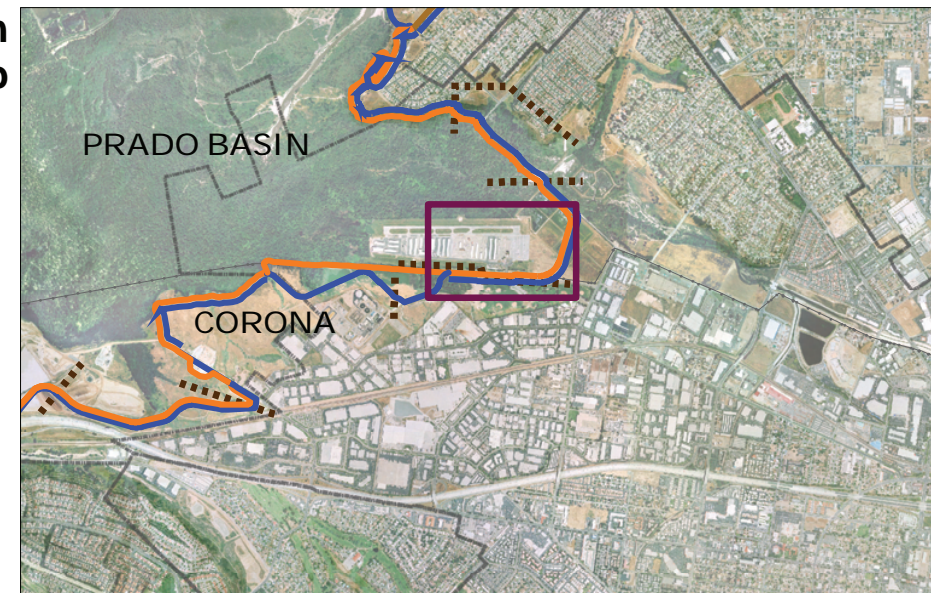
FIGURE	MUNICIPALITY / AGENCY	UTILITY TYPE	UTILITY DESCRIPTION	REACH LOCATION	CROSSING DESCRIPTION	UTILITY INFORMATION SOURCE
1	Corona	Water main	An 8" water main which crosses Butterfield Road.	Reach VI	The water main crosses perpendicular to the trail alignment just west of the existing entrance to the Corona Municipal Airport. The depth of water main should be sufficient to avoid conflict, however, verify depth and location in field.	Pipe location taken from City GIS water system data. Pipe size taken from GIS attribute data and metadata summary.
1	Corona	Water main	A 4" water main which runs parallel to the trail alignment.	Reach VI	Although the water main runs parallel to the trail alignment, the alignment is not located over the existing water main. Location of the main should be verified in the field. Maintenance access to the water main may be a concern.	Pipe location taken from City GIS water data. Pipe size taken from GIS attribute data and metadata summary.
2	Corona	Sewer	A 24" ductile iron force main which runs parallel with the trail alignment.	Reach V and Reach VI	The force main alignment parallels that of the 4" water main identified above and in Figure 1. The trail alignment will, in this case, run above the utility. The depth of the force main should be sufficient to avoid conflict, however, depth and location should be verified in the field. Maintenance access to the force main may be required.	Pipe location taken from City GIS sewer system data. Pipe size and material type taken from GIS attribute data and metadata summary.
2	Corona	Sewer	A 4" ductile iron force main which crosses the trail alignment.	Reach V	The force main runs relatively north/south and crosses the trail alignment just west of the water treatment dike. Location and depth of the main should be verified in the field.	Pipe location taken from City GIS sewer system data. Pipe size and material type taken from GIS attribute data and metadata summary.
2	Corona	Sewer	An 8" ductile iron gravity sewer which crosses the trail alignment.	Reach VI	Approximate depth between 6' and 7' below grade. The depth of sewer should be sufficient to avoid conflict, however, depth and location should be verified in field. Sewer flows south to north and serves Butterfield Park.	Pipe location taken from City GIS sewer system data. Pipe size and material type taken from GIS attribute data and metadata summary. Approximate depth taken from sewer structure GIS data and associated attribute data.
3	Corona	Storm	An open storm drainage channel which crosses the trail alignment and drains to a wetland.	Reach V	The surface drainage channel crosses the trail alignment at an almost perpendicular angle. A structural crossing, such as a culvert, will be required.	Pipe location taken from City GIS storm sewer system data.
4	So. Cal Gas Co. HTSI, Inc. USACE	Gas	Southern California Gas Company natural gas transmission line. Generally a large diameter pipeline that operate at pressures above 200 psi and transports gas from supply points to the gas distribution system.	Reach IV	The anticipated depth of the pipeline should eliminated potential conflicts, however field verification of the location and depth should be coordinated with SCGC.	Transmission line location taken from Southern California Gas Company GIS data. Pipeline information taken from SCGC website and digital files obtained from HTSI, Inc. Data verified with USACE.
5	Santa Ana Watershed Project Authority (SAWPA)	SARI Line (sewer)	A 48" pipeline which runs parallel to trail alignment.	Reach IV, Reach V, and Reach VI	The installed pipeline depth in the Prado Basin area is approximately 5' below grade or greater (per record drawings). If a similar depth is maintained, no construction conflicts should result. However, depth and location should be verified in the field. Maintenance access to the pipeline will be required.	SARI line location taken from SAWPA GIS data. Pipeline information taken from SAWPA record drawings in PDF format.
6	Norco	Sewer	An 8" vitrified clay pipe (V.C.P.) pipeline which runs parallel to and crosses the trail alignment.	Reach XII	The sewer line crosses perpendicular to the trail in two locations, but the trail will use the existing equestrian trail and the paved surface of the road be so no construction conflicts should result. However, depth and location should be verified in the field. Maintenance access to the pipeline will be required.	Pipe location taken from PDF replicas of City recorded drawings.



Legend

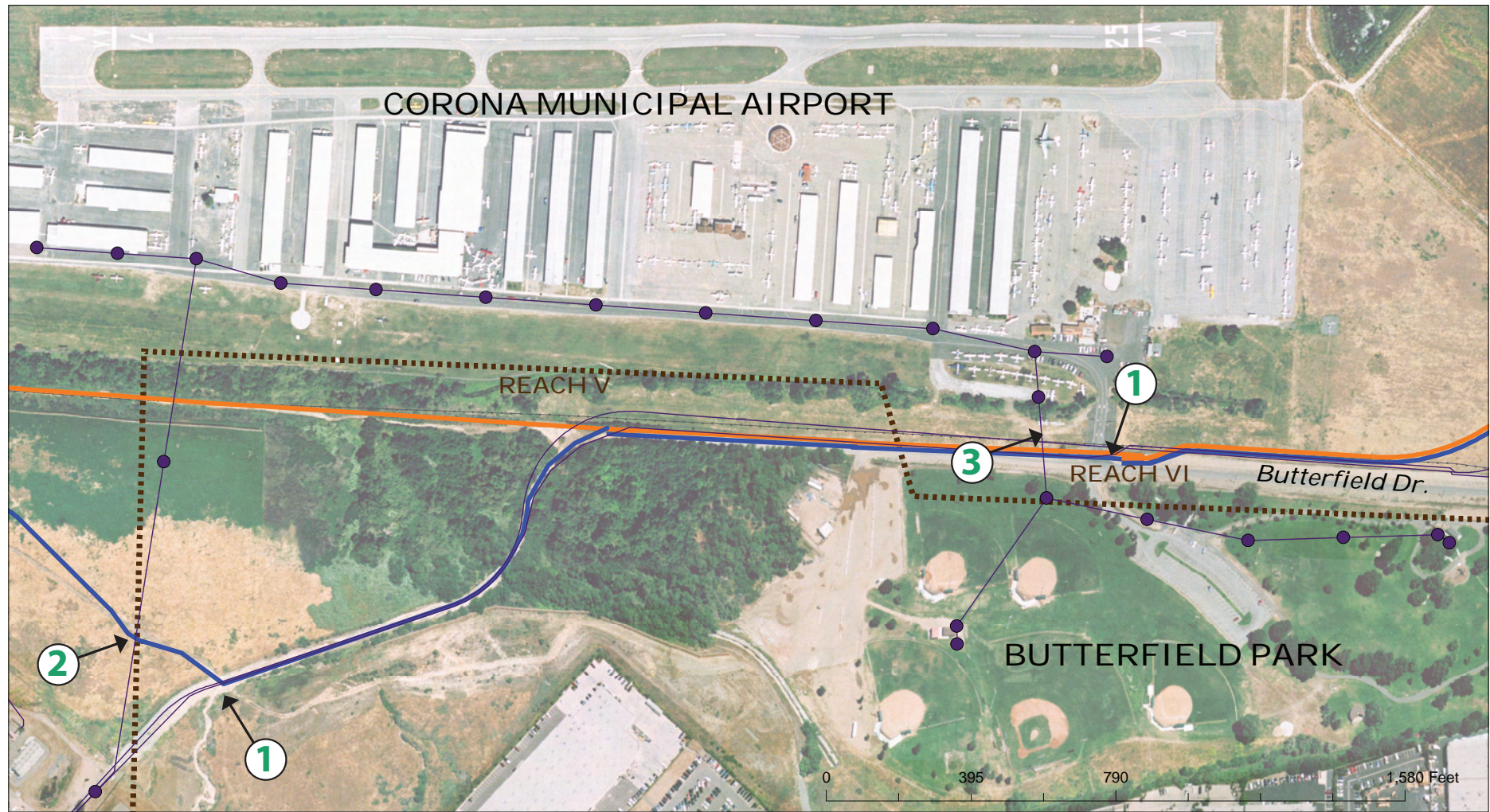
-  Reach Extent Lines
 -  Recommended, Class I
 -  Recommended, Soft
 -  Water Line
 -  Water Structure
-  Existing 8" water main
 -  Existing 4" water main






Location Map






Map 7-1: Santa Ana River Trail - Existing Water Lines and Structures





- Legend**
-  Reach Extent Lines
 -  Recommended, Class I
 -  Recommended, Soft
 -  Sewer Line
 -  Sewer Structure

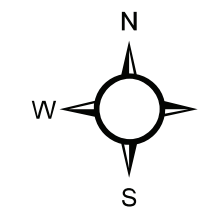
-  Existing 24" ductile iron force main
-  Existing 4" ductile iron force main
-  Existing 8" ductile iron gravity sewer

Location Map









Map 7-2: Santa Ana River Trail - Existing Sewer Lines and Structures

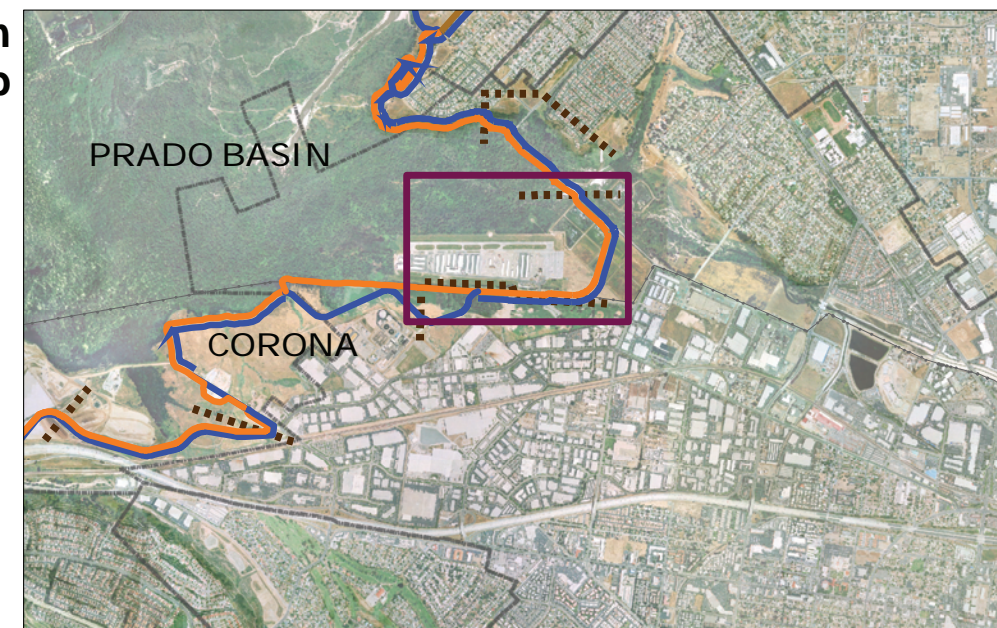




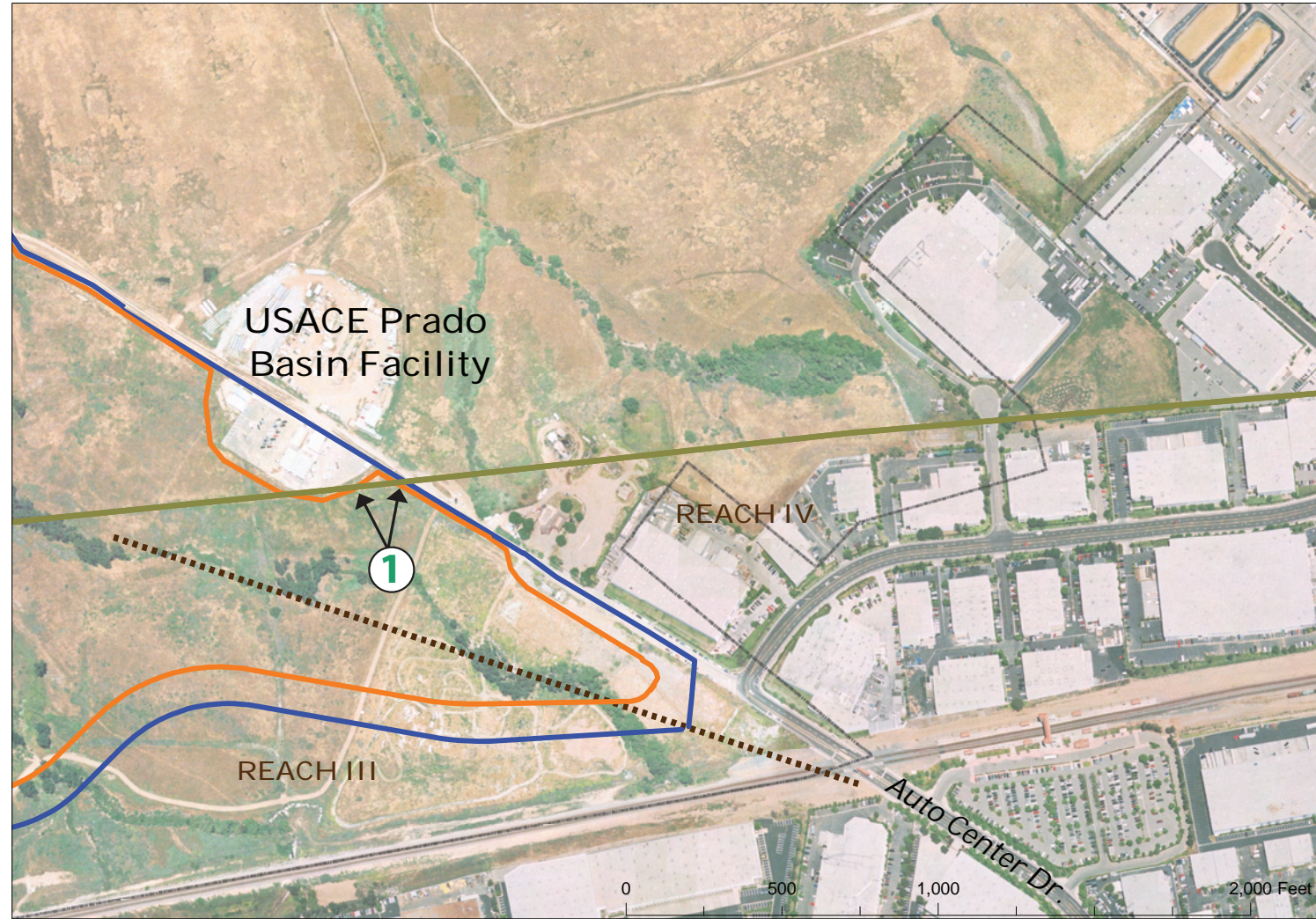
Legend

-  Reach Extent Lines
-  Recommended, Class I
-  Recommended, Soft
-  Storm Line
-  Storm Structure
-  Existing storm drainage channel





Location Map



Map 7-3: Santa Ana River Trail - Existing Storm Lines and Structures

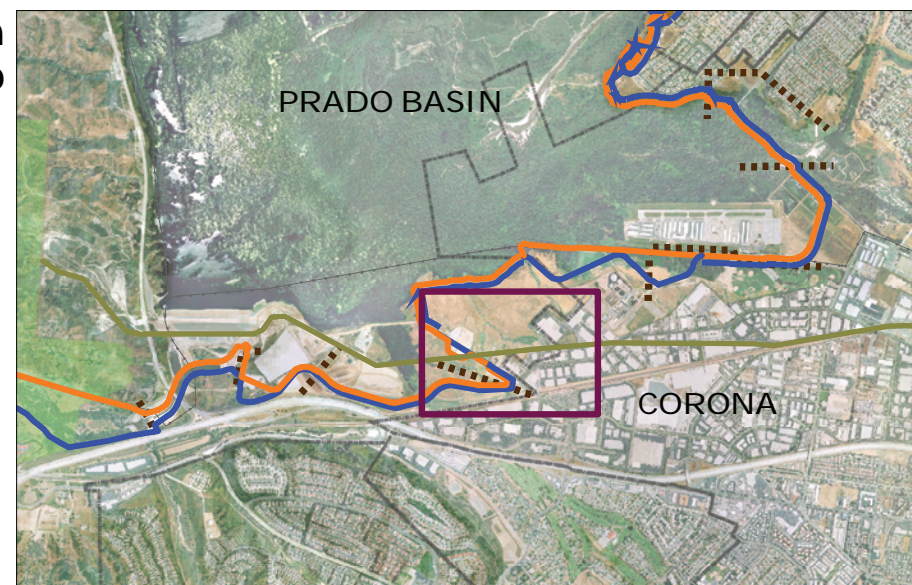


Legend

-  Reach Extent Lines
-  Recommended, Class I
-  Recommended, Soft
-  Gas Pipelines

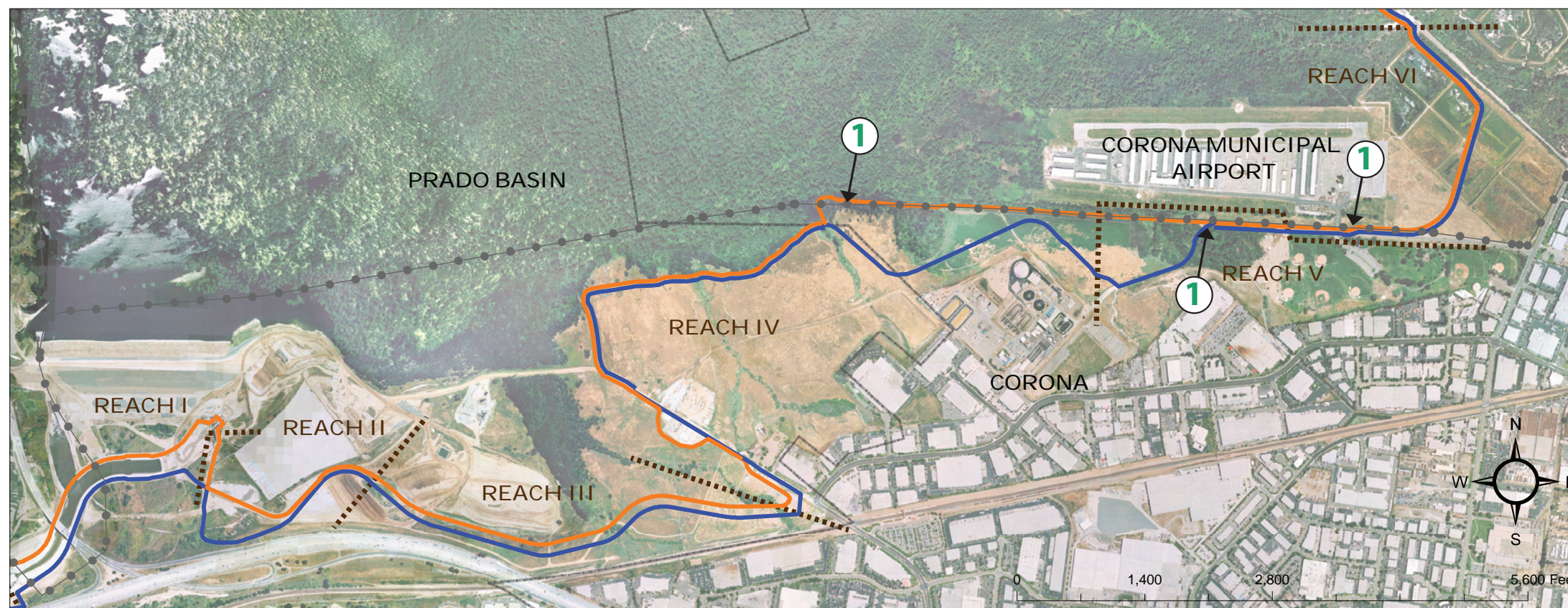
1 Existing natural gas transmission line. Generally a large diameter pipeline that operate at pressures above 200 psi and transports gas from supply points to the gas distribution system.

Location Map



Map 7-4: Santa Ana River Trail - Existing Gas Pipelines

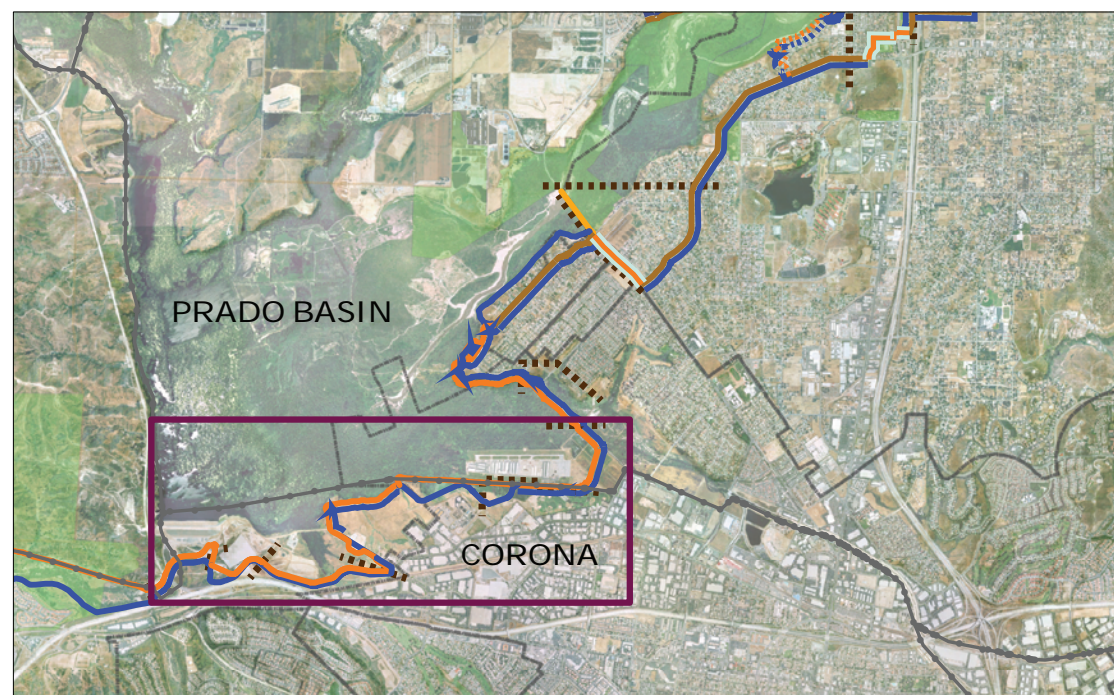




Legend

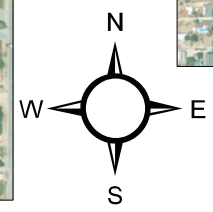
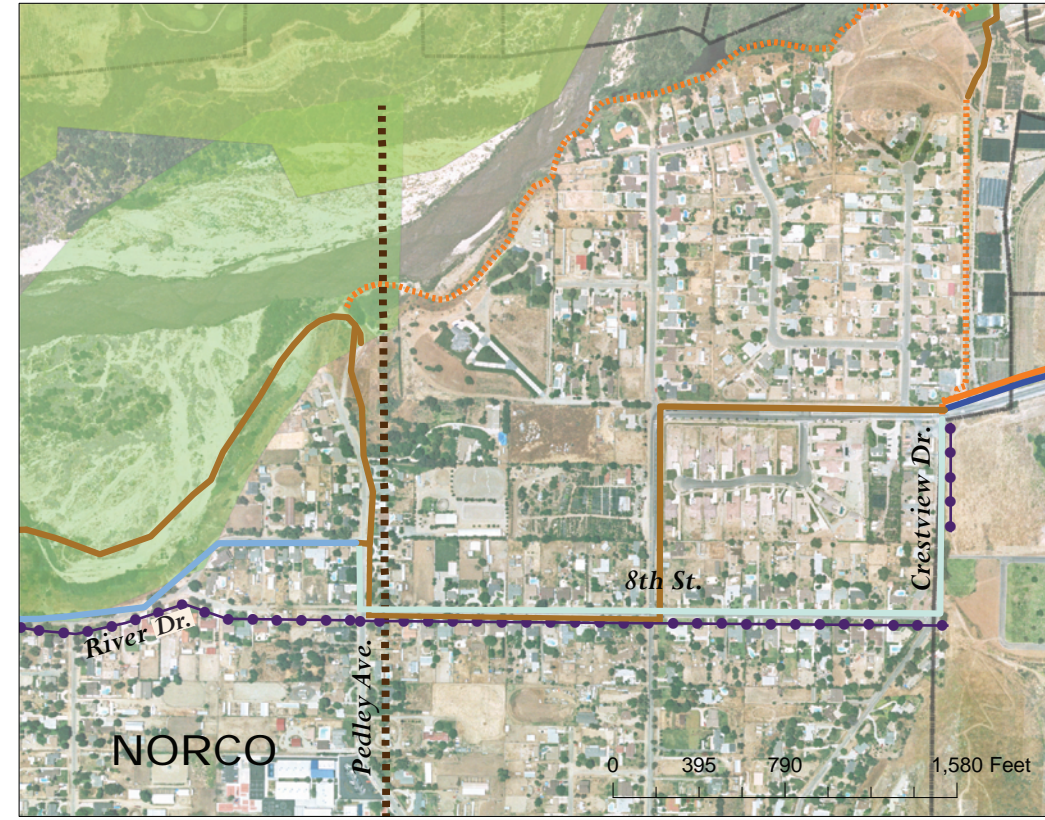
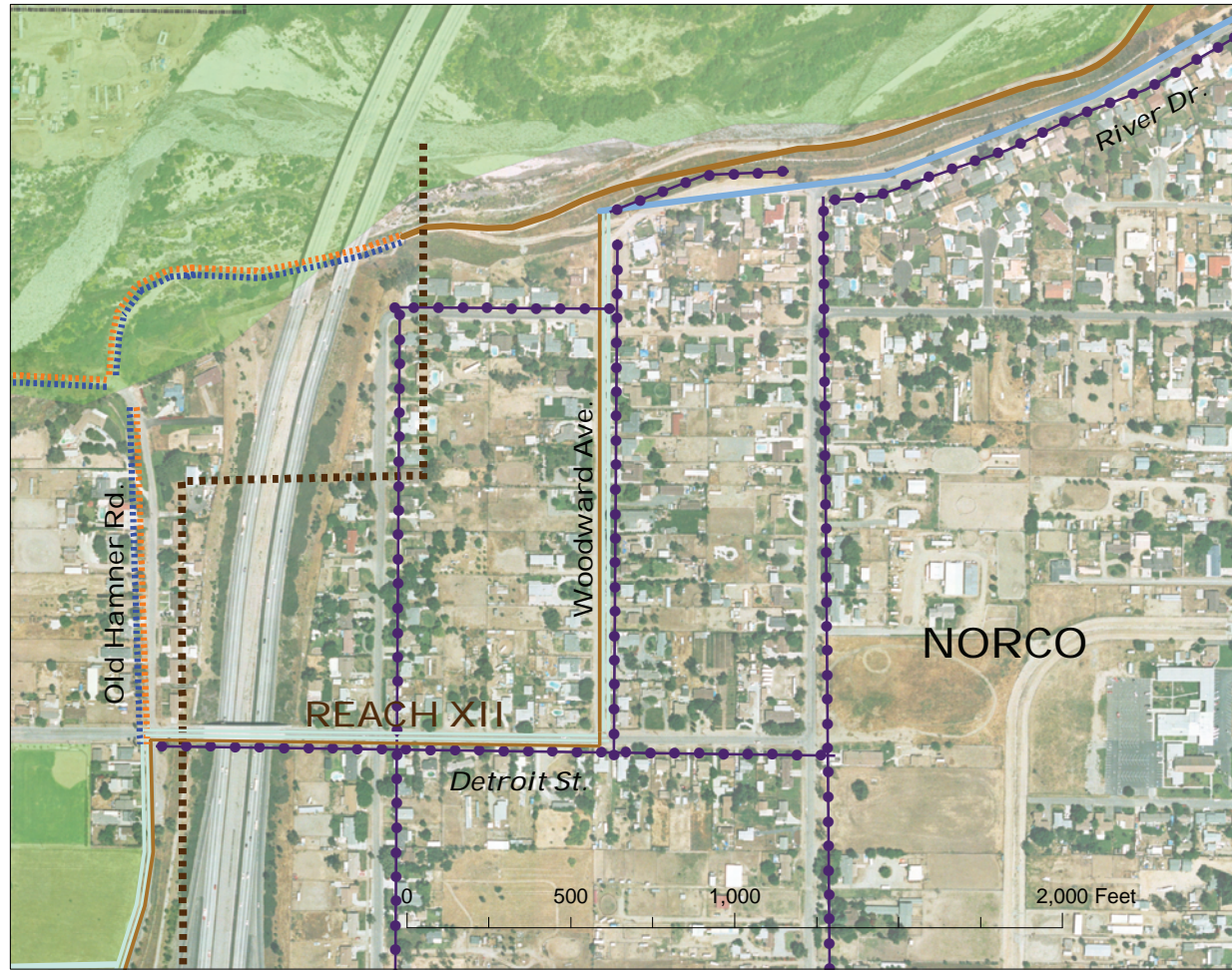
- Reach Extent Lines
- Recommended, Class I
- Recommended, Soft
- Sari Line
- Existing 48" diameter pipeline

Location Map

















Map 7-5: Santa Ana River Trail - Existing SARI Line

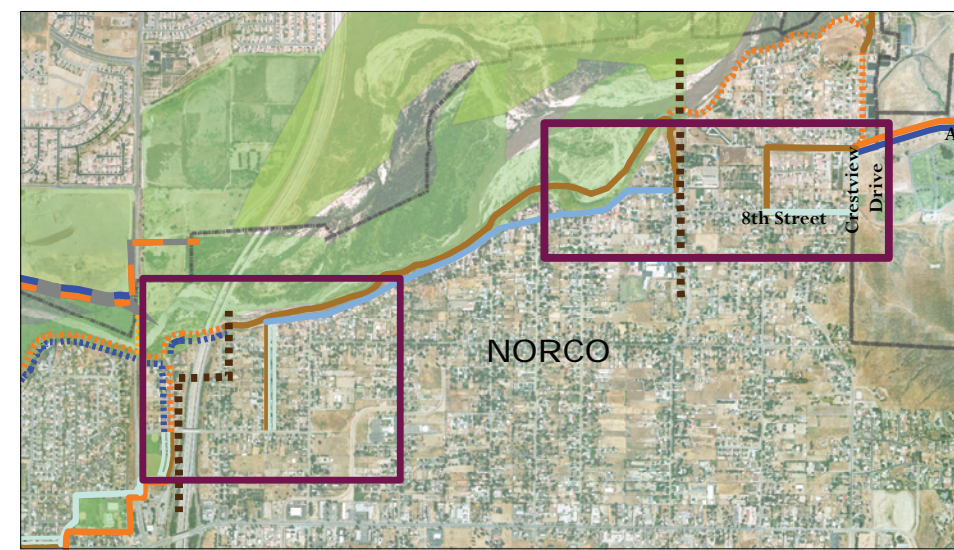




Legend

-  Reach Extent Lines
-  Recommended, Class I
-  Recommended, Soft
-  Recommended, Class Ib - On-Road
-  Sewer Pipeline - Existing 8" diameter V.C.P.
-  Recommended, Class II
-  Recommended, Multi-use
-  Recommended, Class I - Spur
-  Recommended, Soft - Spur
-  Recommended, Class Ib - On-Road - Spur
-  Existing, Class I
-  Existing, Soft
-  Future, Class I
-  Future, Soft

Location Map



Map 7-6: Santa Ana River Trail - Existing Sewer Line



FIGURE 6

Table 7-2: Utility Data Inventory

SOURCE	DATA TYPE / FILE NAME	DESCRIPTION OF DATA AVAILABLE
City of Corona	GIS cityonly.shp	Shapefile with single polygon of Corona City limits and sphere of influence.
City of Corona	GIS; parcels.shp	Shapefile with 48,432 polygons representing assessor parcels – Maintained for City and a portion of the City Sphere of Influence just south of City Limits.
City of Corona	GIS; sewerIn.shp	Shapefile with 10,620 polylines representing the City Sewer System's sewer lines. Captured primarily from construction drawings.
City of Corona	GIS; sewerpt.shp	Shapefile with 9,930 points representing the City Sewer System's sewer points (structures, meters, etc.) Captured primarily from construction drawings.
City of Corona	GIS; stormIn.shp	Shapefile with 12,328 polylines representing the City Sewer System's storm sewer lines. Captured primarily from construction drawings.
City of Corona	GIS; stormpt.shp	Shapefile with 16,858 points representing the City Sewer System's storm sewer points (structures, etc.) Captured primarily from construction drawings.
City of Corona	GIS; waterIn.shp	Shapefile with 43,586 polylines representing the City Water System's water lines. Captured using original City water atlas and construction drawings.
City of Corona	GIS; waterpt.shp	Shapefile with 44,207 points representing the City Water System's water points (structures, meters, etc.) Captured using original City water atlas and construction drawings.
City of Corona	Metadata for GIS data sets; Word file	Metadata information for all above GIS files and additional GIS files available from the City of Corona's GIS department.
City of Norco	w0901.pdf	Provides location of watermains and gas lines for Hamner Ave., Detroit St., Woodward Ave., River Dr., Seventh St., Pedley Ave., Eighth St., and California Ave. (50 sheets)
City of Norco	w6918.pdf	Provides location of reclaimed water pipe along River Rd. Provides ROW width, approx. pavement edge locations, dimension to reclaimed water pipe, & additional utilities located in ROW.
City of Norco	CA Rehab Center Domestic Water Supply System Plans, dated 1/28/91 w2106.pdf	Provides location of utility information along Bluff St. just north of River Rd. (PDF pg 2, dwg P-1).
City of Norco	Utility Relocation Project - Phase I & II dated 8/15/85 w8101_w8103.pdf	Provides utility and ROW information for areas along Old Hamner Rd., 6th St. And Detroit Avenue

SOURCE	DATA TYPE / FILE NAME	DESCRIPTION OF DATA AVAILABLE
City of Norco	20" dia. Pipeline plan and profile - dated 1968 w8913.pdf	Provides utility and ROW information for areas along Old Hamner Rd. north of Detroit Avenue
City of Norco	20" dia. Pipeline plan and profile - dated 3/26/04 w2932.pdf	Provides utility and ROW information for areas along Old Hamner Rd. north of Citrus St. & south of Schleisman Rd.
City of Norco	Water Improvement plans for new AM/PM facility - dated 10/9/89 w2915.pdf	Provides utility and ROW information for the Hamner Ave. and Norco Dr. intersection.
City of Norco	Record drawings for sewer assessment district #195, dated 4/5/89. s0195.pdf	Plan & profile drawings with plan views overlaid on aerial imagery. 156 total sheets in set. Provides SART-relevant utility and ROW information for Hillside Ave., 8th St., California Ave., North Dr. and Arlington Ave. (Class II bikeway area at East end of trail)
City of Norco	Record drawings for sewer assessment district #109, dated 1/28/72 s0109.pdf	Plan & profile drawings with plan views overlaid on aerial imagery. 56 total sheets in set.
City of Norco	Assessment District #190 sanitary sewer plan & profile - dated 8/16/76 s0103.pdf	Plan & profile drawings. SART use for Alhambra St., Cedar Ave.,
City of Norco	Assessment District #189 sanitary sewer plan & profile - dated 8/16/76 s0104.pdf	Plan & profile drawings for Valley View Ave., Detroit St., Detroit & 7th., Sierra Ave., Woodward Ave., River Dr., & 8th St.
City of Norco	Norconian Hills Trunk Sewer Main plan & profile - dated 4/12/76 s5301.pdf	Provides ROW and sewer location information for areea along Corydon Ave. 9 drawings total.
City of Norco	30" Force Main Relocation at River Road Bridge - dated 6/30/08 s6914.pdf	Provides ROW and utility information for River Road Bridge area. Compare with full set of River Road Bridge Plans dated 7/6/08.
City of Norco	Utility Relocation Project (sewer & water) for Proposed I15 Route - dated 8/15/85 s8101-8105.pdf	Provides utility and ROW information for areas along Old Hamner Rd., 6th St. And Detroit Avenue
City of Norco	Sewer Lift Station Improvements - dated 4/18/06 s7315.pdf	Provides sanitary sewer lift station locations on Shawnee Dr., Corral St., and Corydon Avenue. Drawing of intersection of Corydon Ave./Norco Dr. and Fifth St. useful to SART project.
City of Norco	Old Hamner Road Lift Station Upgrade & Force Main Extension - dated 3/19/03 s5703.pdf	4 sheets. Provides utility and ROW information for Old Hamner Ave. and Detroit Street intersection. Also extends to Taft Street.
City of Norco	Sewer Extension Plan - dated 9/7/77 s0901.pdf	Provides sanitary sewer and water main extension information for the fire station site along Corydon Avenue. Also provides ROW information. Single sheet.
City of Norco	Improvement Plans for Norco Ultramar - dated 5/14/01 s2912.pdf	Provides sanitary sewer, ROW, and other utility information at the corner of Norco Drive, Hamner Ave., and 6th Street. Useful for fine grain Class II bike lane alignment and connection to Norco park and ride lot.

Table 7-2: Utility Data Inventory

SOURCE	DATA TYPE / FILE NAME	DESCRIPTION OF DATA AVAILABLE
City of Norco	Subdivision just north of Arlington Ave. and at the intersection with Viceroy Ave. - dated 4/12/73 tr4347-1	Provides ROW width for Corydon Ave. and location and dimensions for equestrian trails on both sides of Corydon Ave.
City of Norco	Subdivision along Corydon Ave. from Fifth St. to Rocky View Dr. - dated 12/21/76 tr5005-4	Provides ROW width for Arlington Ave. and location and dimensions for equestrian trail north of Arlington Ave.
City of Norco	Subdivision along Bluff Road south of River Road. - dated 5/5/75 tr5777-1	Provides ROW width and configuration information for the Bluff St. / River Rd. intersection.
City of Norco	Subdivision along the south side of Norco Dr. between Rocky View Rd. & Silver Cloud Circle. - dated 8/8/88 tr23020-1	Provides ROW width information for Norco Dr.
City of Norco	Signal improvement plans for River Road @ Bluff St. and Ped/Eq crossing of Corydon Ave. @ Wayne Makin Park. - dated 4/6/00 ts0902.pdf	Provides configuration of Bluff St. / River Rd. intersection, signilization, and pavement striping.
City of Norco	Traffic Signal and Eq Crossing @ North Dr. (Arlington Dr.) & Crestview Dr. - dated 7/26/01 ts0903.pdf	Provides configuration of North Dr. (Arlington Dr.) intersection, signilization, and lane & pavement striping.
City of Norco	River Road Bridge Replacement Project Plans- Base, A, B, & C - dated 7/6/08.pdf	Approx imately 149 plans for River Road Bridge plan including existing utility plans on sheets 38 through 40
JCSD	Sewer and Water Atlas Maps Albert A. Webb and Assoc., 2003	Provides location of water and sewer lines in tract adjacent to the project area along the bluff and adjacent to Kendra Lane upstream of River Rd./Archibald Ave.
Santa Ana Watershed Project Authority (SAWPA)	SARI RW and EASEMENTS; PDF files	Provides location of SARI line and utility easements beginning at Green River Golf Course clubhouse and conitnuing west.
	SARI line As-Built plan & profile drawings dated 1975; PDF files	Provides cover sheet, location map, ROW map, and 16 plan and profile drawings of SARI line from area north of railroad by Green River Golf Course clubhouse to just west of StHwy 71.
	SARI line easment documents (text & maps, 9 documents total); PDF files	Encroachment docs, condemnation docs, and easement legal descriptions along with site map similar to As-Built drawings.

Table 7-3: Power Pole and Street Light Locations

Note. The location of power poles and street lights were determined by a visual inspection of aerial photos on MSN.com. These will need to be verified with Southern California Edison prior to construction.
Where power poles are set back from the curb, the trail will be located on the street side of the poles; when adjacent to the curb, the trail will be located on the residential side.

Street	Power Poles	Number of Poles	Side of Road	Location in Relation to Pavement Edge/Curb	Street Light Locations	Location in relation to Road Edge/Curb
					None	
City of Corona						
Butterfield Dr. (Clearwater Dr. to Aviation Dr.)	N	0			None	
Butterfield Dr. (Aviation Dr. to Smith Ave.)	Y	2	N	Inside and adjacent to airport fencing	None	
	Y	8	S	Adjacent		
Rincon St. (Smith Ave. to Corydon St.)	Y	2	NE	Set back (first 300' from Smith only)	None	
¹ Corydon St. (Rincon St. to Stagecoach Rd.)	Y	19	SW	Set back	None	
	Y	2	SE	Adjacent		
Stagecoach Rd. (Corydon St. to Roundup Rd.)	N	0			SW side of street	12 street lights in median strip between sidewalk and street
² Bluff St.(Stagecoach Rd. to River Rd.)	Y	3	NE	Set back	SE corner of Wagon Wheel Rd.	Adjacent
			SW	Set back		
City of Norco						
					None	
River Rd. (Bluff St. to Corydon Ave.)	Y	13	SW	Adjacent	None	
	Y	5	NW	Set back		
Corydon Ave. (River Rd. to Belgian Dr.)	N	0			NW side of Corydon Ave. at Belgian Dr.	Adjacent
Corydon Ave. (Belgian Dr. to Shawnee Dr.)	N	0			NE corner at Shawnee Dr.	Adjacent
Corydon Ave. (Shawnee Dr. to Bluff St.)	N	0			NE corner at Bluff St.	Adjacent
Corydon Ave. (Bluff St. to Chestnut Dr.)	N	0			SW corner at Chestnut Dr.	Adjacent
Corydon Ave. (Chestnut Dr. to Vine St.)	N	0			SE corner at Vine Ave.	Adjacent
Corydon Ave. (Vine St. to Bronco Ln.)	N	0			NE corner at Bronco Ln.	Adjacent
Norco Dr. (5th St. to Silver Cloud Cl.)	N	0			NE corner at Silver Cloud Cl.	Adjacent
Norco Dr. (Silver Cloud Dr. to Silver Cloud Dr.)	N	0			SE corner at Silver Cloud Dr.	Adjacent
Norco Dr. (Silver Cloud Dr. to Broken Twig Dr.)	N	0			SE corner at Broken Twig Dr.	Adjacent
Norco Dr. (Broken Twig Dr. to Alhambra St.)	N	0			NW corner at Alhambra St.	Adjacent
Norco Dr. (Alhambra St. to Morning Star Ln.)	N	0			SW corner at Morning Star Ln.	Adjacent
Norco Dr. (Morning Star Ln. to Rocky View Dr.)	N	0			NE corner at Rocky View Dr.	Adjacent

1. There is adequate paved room for Class II bikeways, no utilities will be affected.
2. In locations where power poles and street lights are both present but not adjacent, street lights may need to be relocated.

Table 7-3: Power Pole and Street Light Locations

Note. The location of power poles and street lights were determined by a visual inspection of aerial photos on MSN.com. These will need to be verified with Southern California Edison prior to construction.
Where power poles are set back from the curb, the trail will be located on the street side of the poles; when adjacent to the curb, the trail will be located on the residential side.

Street	Power Poles	Number of Poles	Side of Road	Location in Relation to Pavement Edge/Curb	Street Light Locations	Location in relation to Road Edge/Curb
Norco Dr. (Rocky View Dr. to Cedar Ave.)	N	0			SW corner at Norconian Dr./ Cedar Ave.	Adjacent
Cedar Ave. (Norco Dr. to Alhambra St.) - one pole on west side of Cedar Ave.	Y	1	W	Adjacent	None	
Alhambra St. (Cedar Ave. to Acacia Ave.)	Y	6	S	Adjacent	None	
Acacia Ave. (Alhambra St. to Taft St.) - one pole on west side of Acacia St.	N	0			None	
Taft St. (Acacia Ave. to Old Hamner Rd.) - one pole at NE corner of Hamner Ave.	N	0			None	
² Old Hamner Rd. (Taft St. to Detroit St.)	Y	3	E	Set Back	NE corner of Taft St.	Adjacent
			W			
Detroit St. (Old Hamner Ave. to Hamner Ave. bridge)	Y	1	N	Adjacent	SW corner of bridge	Set Back
² Detroit St. (Hamner Ave. bridge to Valley View Ave.)	Y	11	N	Set Back	None	
			S			
Valley View Ave. (Detroit St. To River Dr.)	Y	13	E	Set Back	None	
River Dr. (Valley View Ave. to Corona Ave.)	N	0			None	
River Dr. (Corona Ave. to Temescal Ave.)	Y	9	NE	Adjacent	None	
			SE	Adjacent/Set Back		
River Dr. (Temescal Ave. to Eighth St.)	Y	10	N	Set Back	None	
			S			
Eighth St. (River Dr. to Pedley Ave.) one pole at corner of River Dr.	Y	1	S	Set Back	None	
Eighth St. (Pedley Ave. to Crestview Dr.)	Y	11	S	Set Back	None	
			N			
Crestview Dr. (Eighth St. to Arlington Ave.)	Y	5	E	Set Back	None	
Arlington Ave. (Crestview Dr. to Memorial Park entrance) - first pole east of Crestview Dr. on north side is adjacent to the road	Y	8	W	Set Back	None	
			N			
Arlington Ave. (Memorial Park entrance to Hidden Valley Wildlife Area entrance)	Y	4	S	Set Back	None	
		1	N			
City of Eastvale						
					None	
Archibald (Bluff St. to Corydon Ave.)	Y	13	SW	Adjacent	None	
			NW	Set back		
Archibald (Prado Basin Rd. to Grapewin Ave.)	Y	2 sm	E	Setback 20'	Midblock west side of street	
			E	Adjacent		
			E	Setback 6'		
		3 lg	W	Adjacent		
Archibald at Grapewin Ave.					SE corner of Grapewin Ave.	Adjacent

1. There is adequate paved room for Class II bikeways, no utilities will be affected.
2. In locations where power poles and street lights are both present but not adjacent, street lights may need to be relocated.

The trail alignment also includes Woodward Ave. and North Dr. in Norco. Relevant utility information is shown on Map 7.6. Streets that will also have an equestrian trail added are not considered in this table.



Blank Page