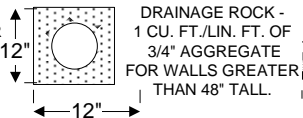


OMIT HEAD JOINTS OR PROVIDE WEEP HOLES 6" O.C. OR PROVIDE 3" PERFORATED DRAINAGE PIPE (DRAINING TO DAYLIGHT)



- INSPECTIONS:**
- 1) FOUNDATION - PRIOR TO POUR
 - 2) BOND BEAM - PRIOR TO GROUTING.
 - 3) FINAL - BEFORE WALL IS CAPPED.

Retaining Wall Design Detail Dimensions and Steel Requirements

GRADE	H	H ₁	W	X BARS	Y BARS	Z BARS	K
SLOPING GRADE; MAX 2:1. EQUIV. FLUID PRESSURE = 43 PSI/FT.	5'-4"	2'-0"	3'-6"	#4 @ 24"	#4 @ 24"	#4 @ 16"	12"
	4'-8"	N/R	3'-0"	#4 @ 24"	#4 @ 24"	#4 @ 24"	12"
	4'-0"	N/R	2'-8"	#4 @ 32"	#4 @ 32"	#4 @ 32"	12"
	3'-4"	N/R	2'-3"	#4 @ 32"	#4 @ 32"	#4 @ 32"	N/R
	2'-8"	N/R	2'-0"	#4 @ 32"	#4 @ 32"	#4 @ 32"	N/R
GRADE	H	H ₁	W	X BARS	Y BARS	Z BARS	K
LEVEL GRADE.: EQUIV. FLUID PRESSURE = 30 PSI/FT.	5'-4"	N/R	3'-0"	#4 @ 24"	#4 @ 24"	#4 @ 24"	12"
	4'-8"	N/R	2'-8"	#4 @ 32"	#4 @ 32"	#4 @ 32"	12"
	4'-0"	N/R	2'-3"	#4 @ 32"	#4 @ 32"	#4 @ 32"	12"
	3'-4"	N/R	2'-0"	#4 @ 32"	#4 @ 32"	#4 @ 32"	N/R
	2'-8"	N/R	1'-8"	#4 @ 32"	#4 @ 32"	N/R	N/R

N/R = Not Required

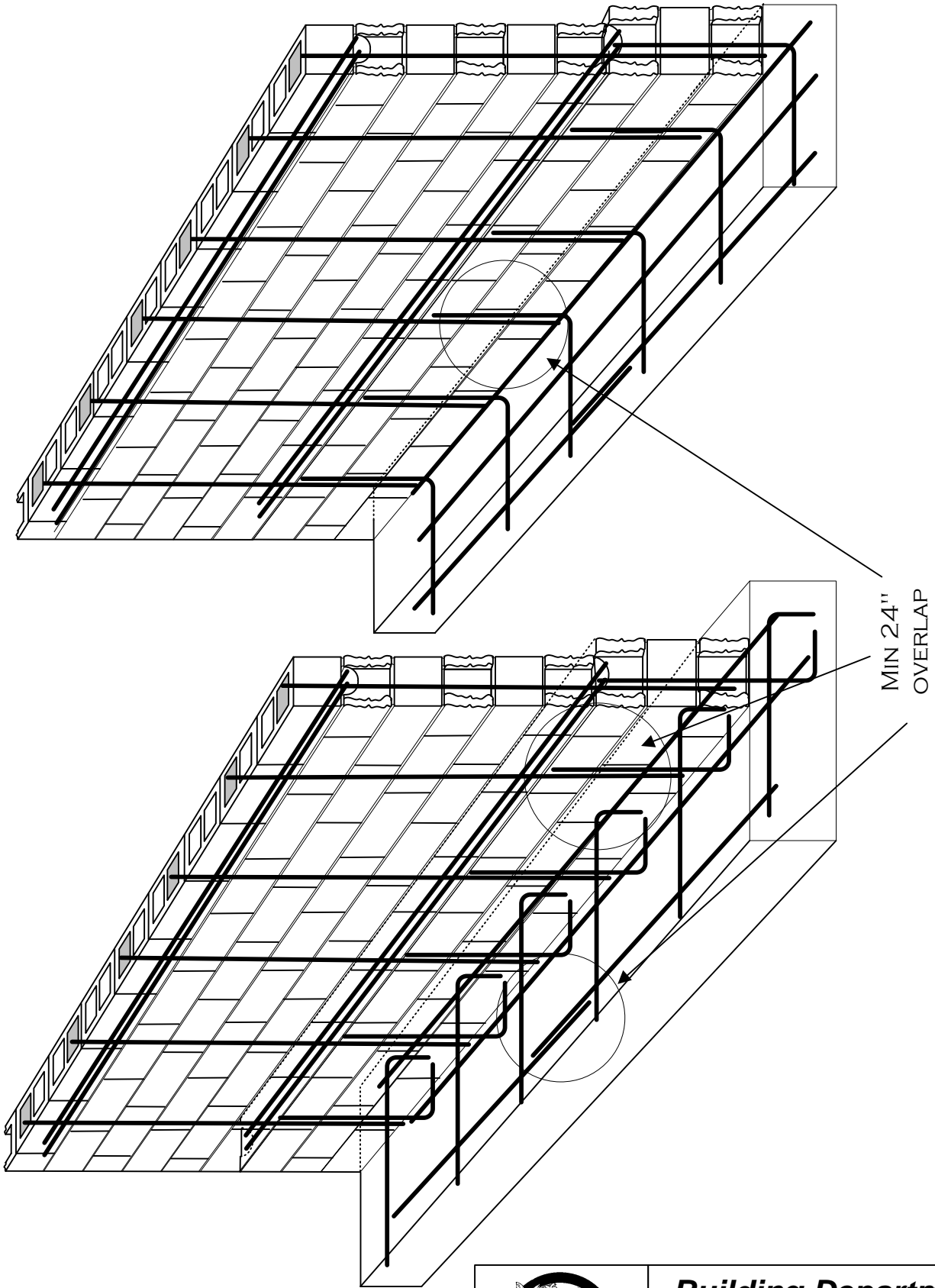
- NOTES:**
- 1) ALL VERTICAL & HORIZONTAL STEEL SHALL BE CONTINUOUS OR HAVE A MIN. 24" LAP SPLICE.
 - 2) WALLS SHALL NOT OBSTRUCT OR CONCENTRATE LOT DRAINAGE.
 - 3) ALL STEEL TO MAINTAIN 3" CLEARANCE TO EARTH.
 - 4) ALL FOOTINGS ARE TO BE PLACED AGAINST UNDISTURBED SOIL.
 - 5) CONCRETE IN FOOTING TO TEST 2500 P.S.I. @ 28 DAYS.
 - 6) CONCRETE BLOCK - GRADE "N" UNITS A.S.T.M. C-90.
 - 7) GROUT: 1 PART CEMENT, 3 PARTS SAND, 2 PARTS PEA GRAVEL.
 - 8) MORTAR - 2 PART CEMENT, 1 PART LIME PUTTY, 9 PARTS SAND.
 - 9) REINFORCING STEEL MIN. GRADE 40.
 - 10) CONSTRUCTION JOINTS RECOMENDED AT 24' O.C.

(909) 736-2250
Fax (909) 739-4893

Building Department
Retaining Wall
Standard Details

815 West Sixth Street, Corona CA 92882-3238

08/02/2005 | RetWallDtl.vsd | 1 OF 2



Building Department
Retaining Wall
Standard Details

(909) 736-2250

815 West Sixth Street, Corona CA 92882-3238

Fax (909) 739-4893

08/02/2005

RetWallDtl.vsd

2 OF 2